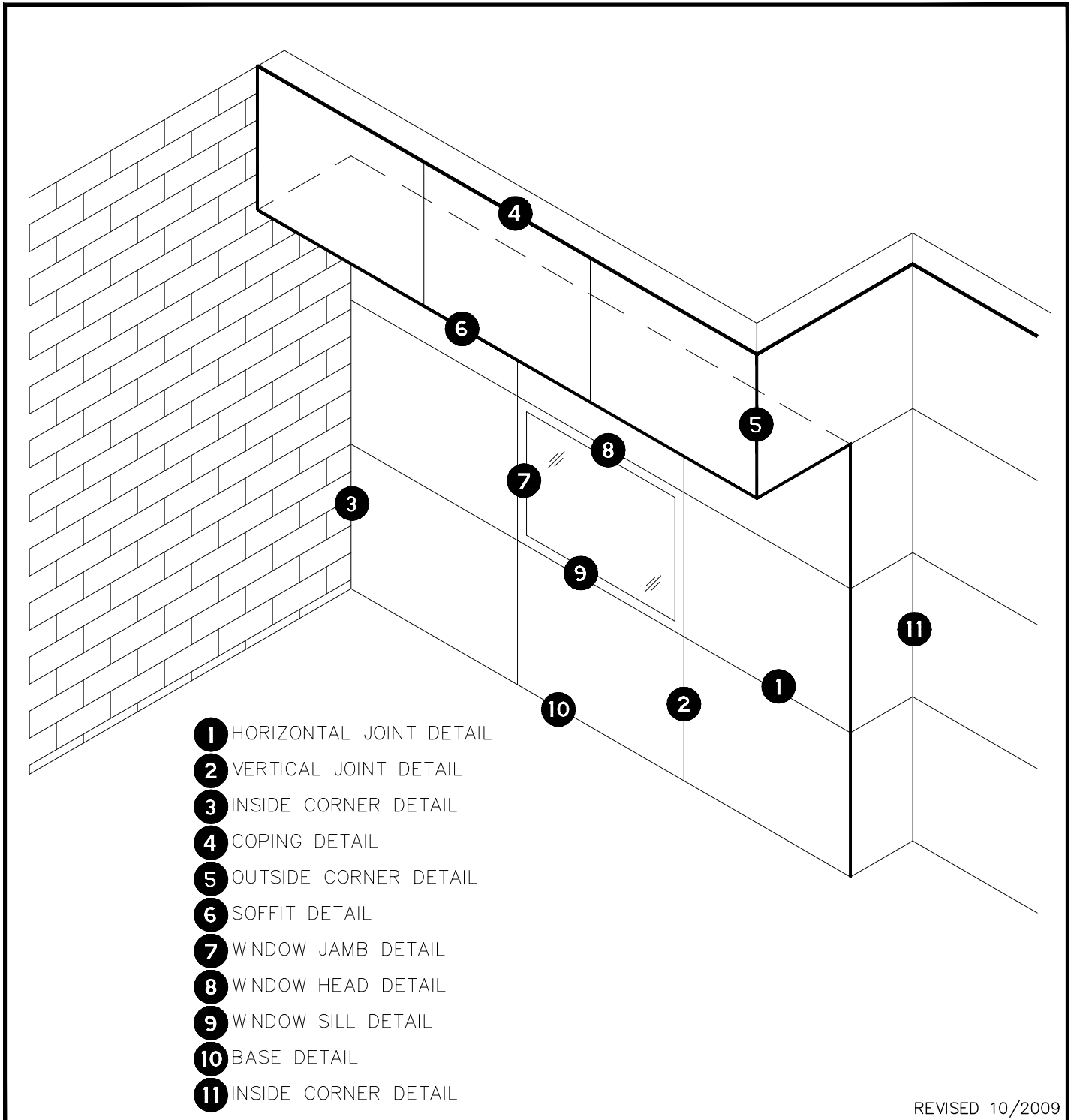


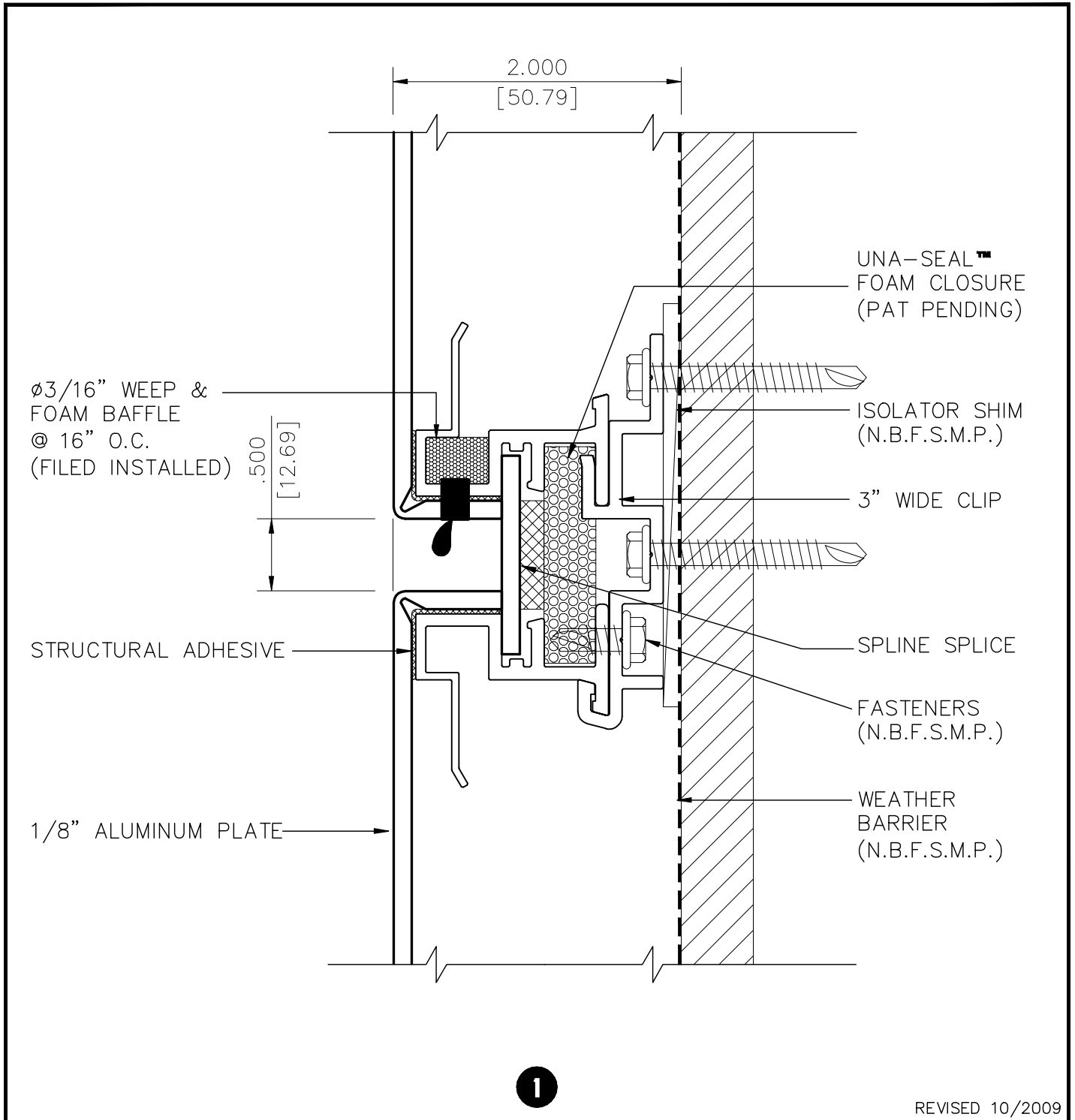
**SERIES 3200 UNA-CLAD PANEL INDEX**

**S3200-00**



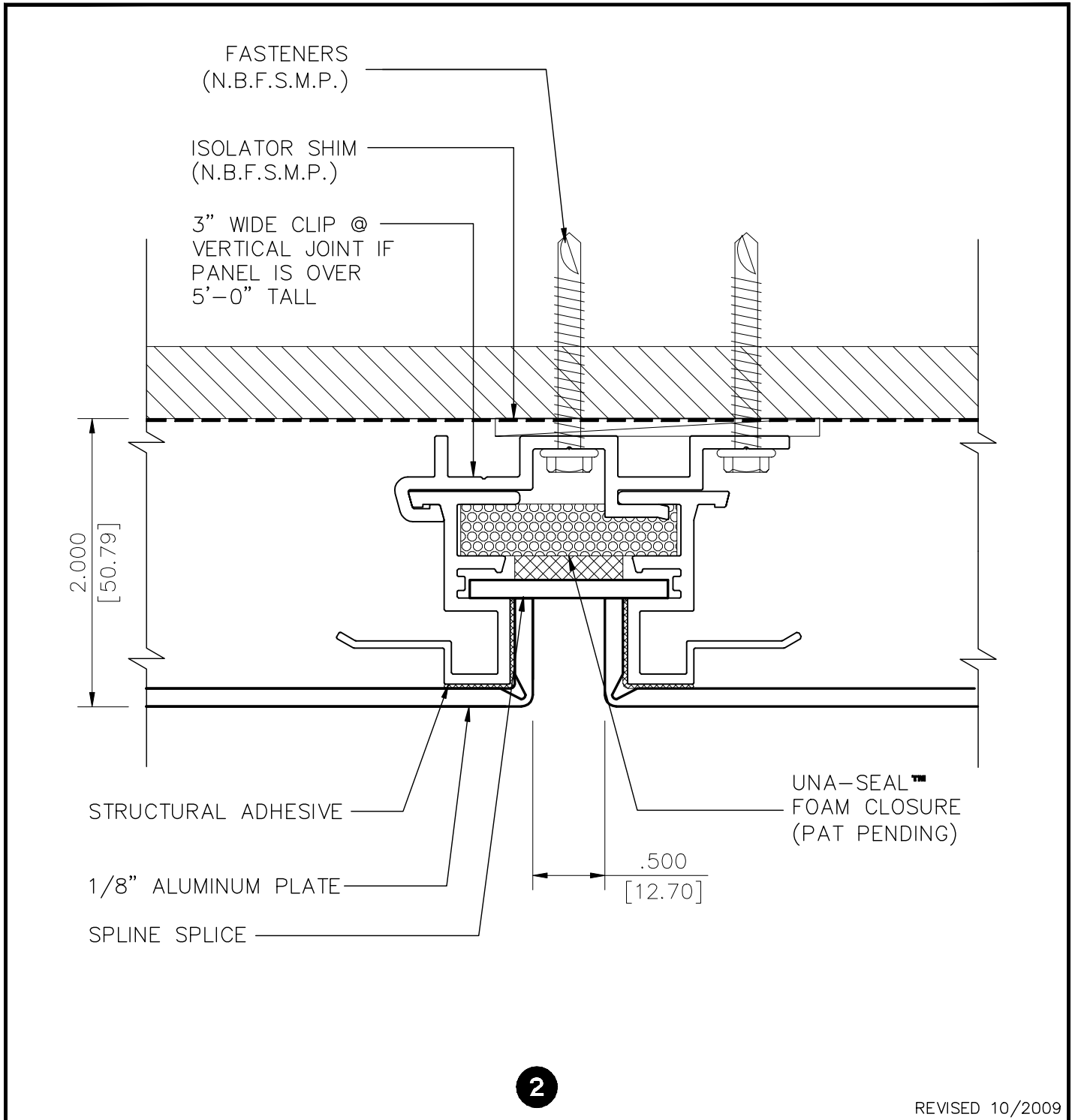
**SERIES 3200 - HORIZONTAL JOINT DETAIL**

**S3200-01**



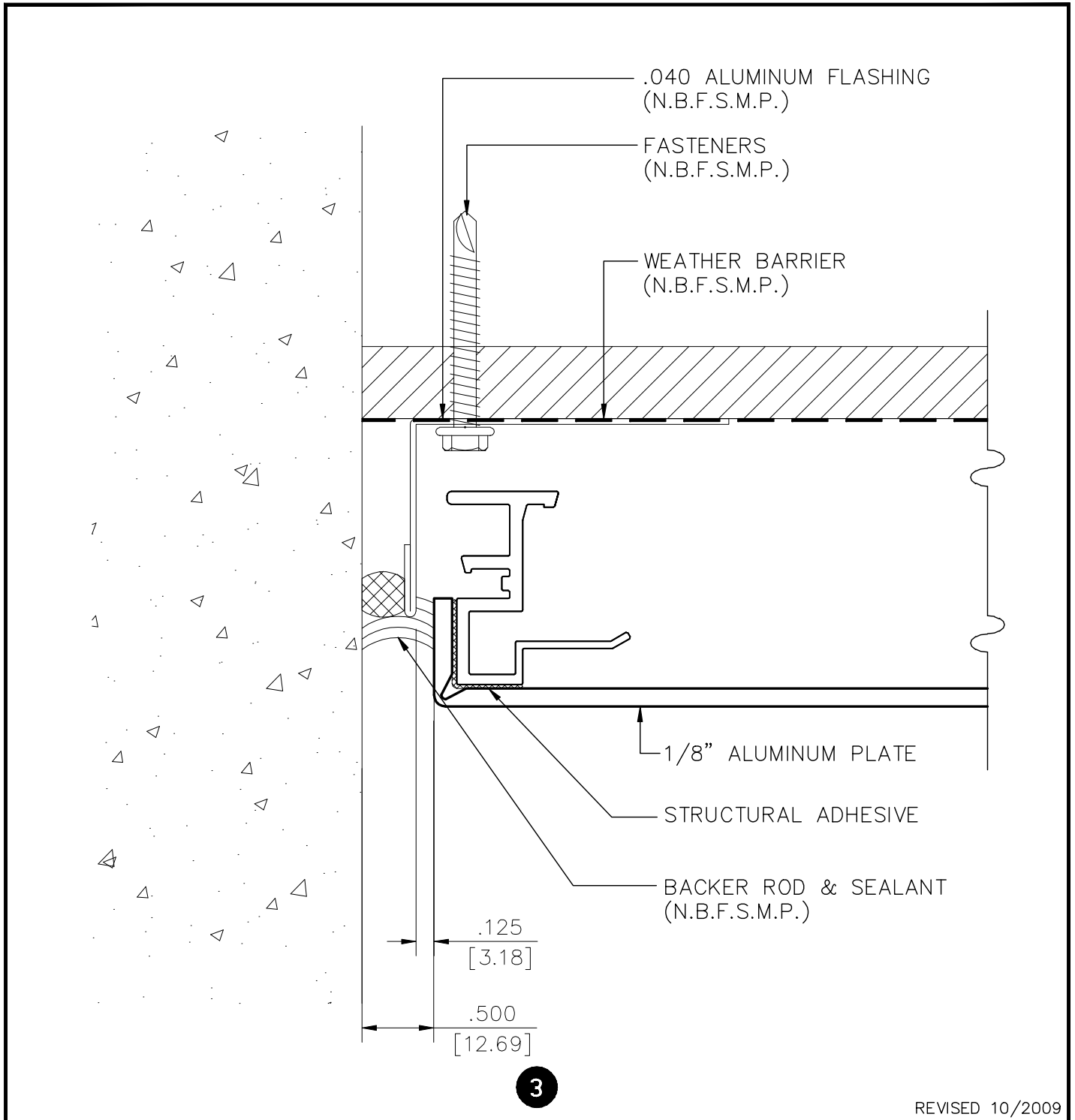
**SERIES 3200 - VERTICAL JOINT DETAIL**

**S3200-02**



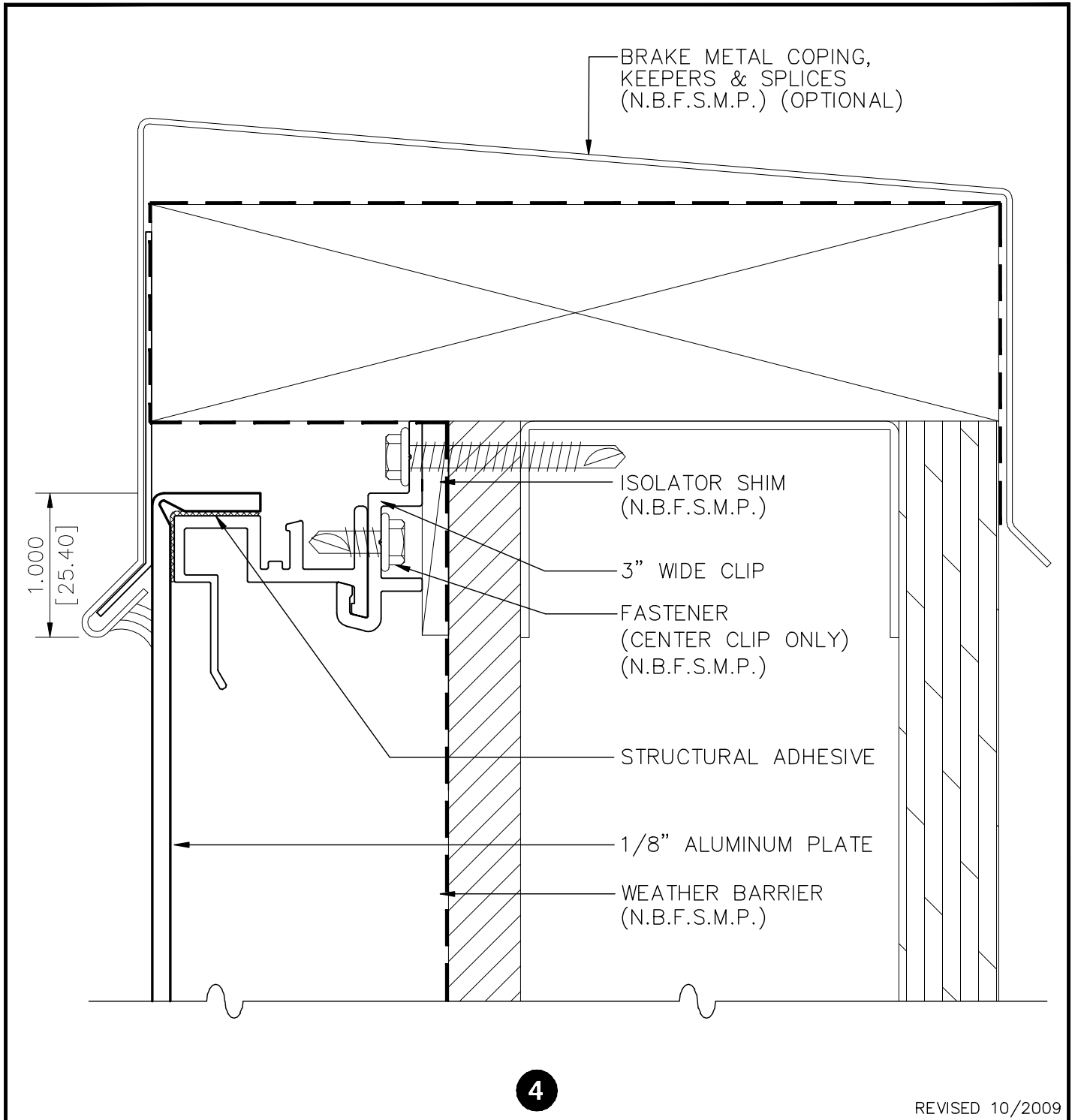
**SERIES 3200 - INSIDE CORNER DETAIL**

**S3200-03**



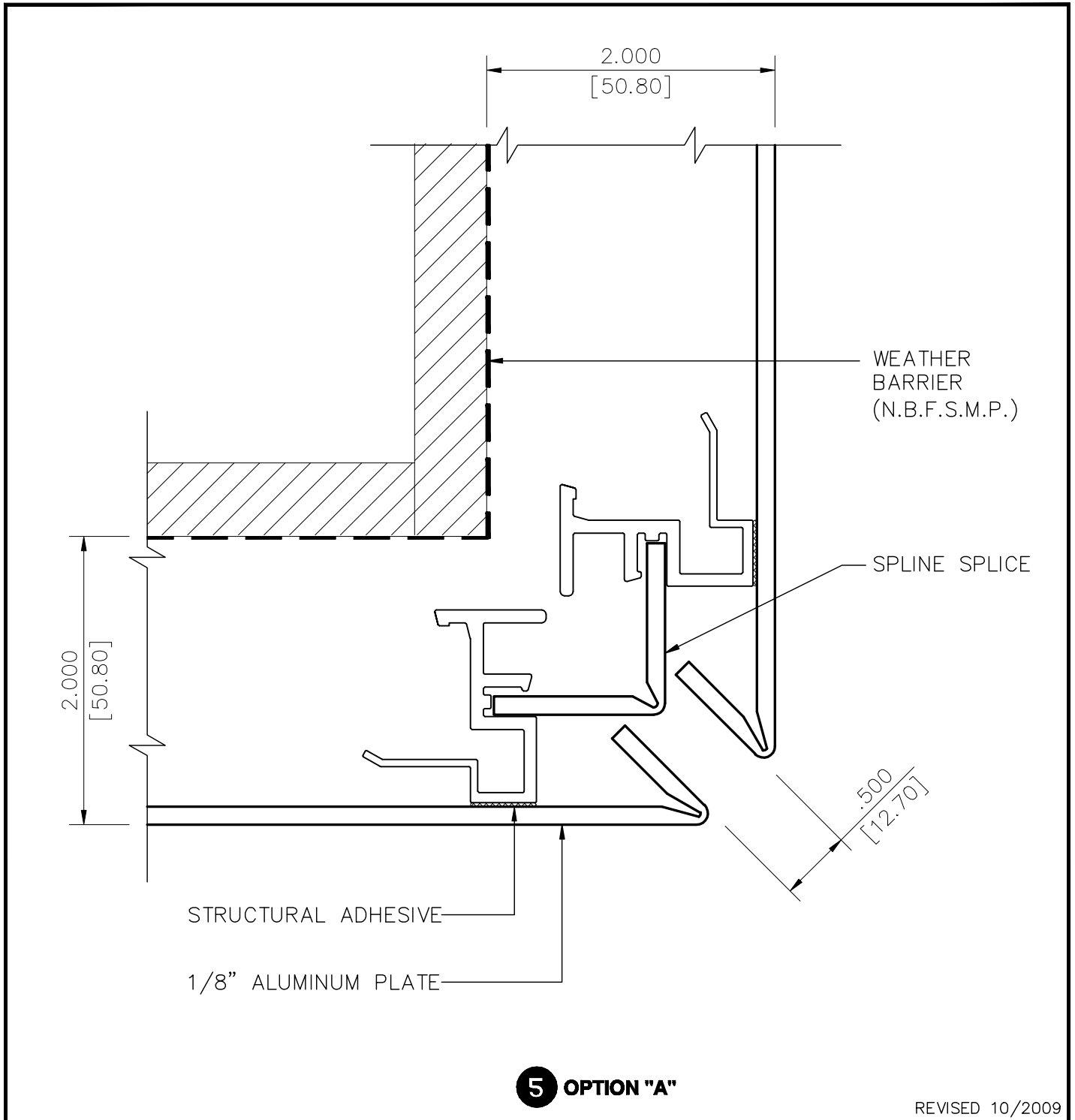
**SERIES 3200 - COPING DETAIL**

**S3200-04**



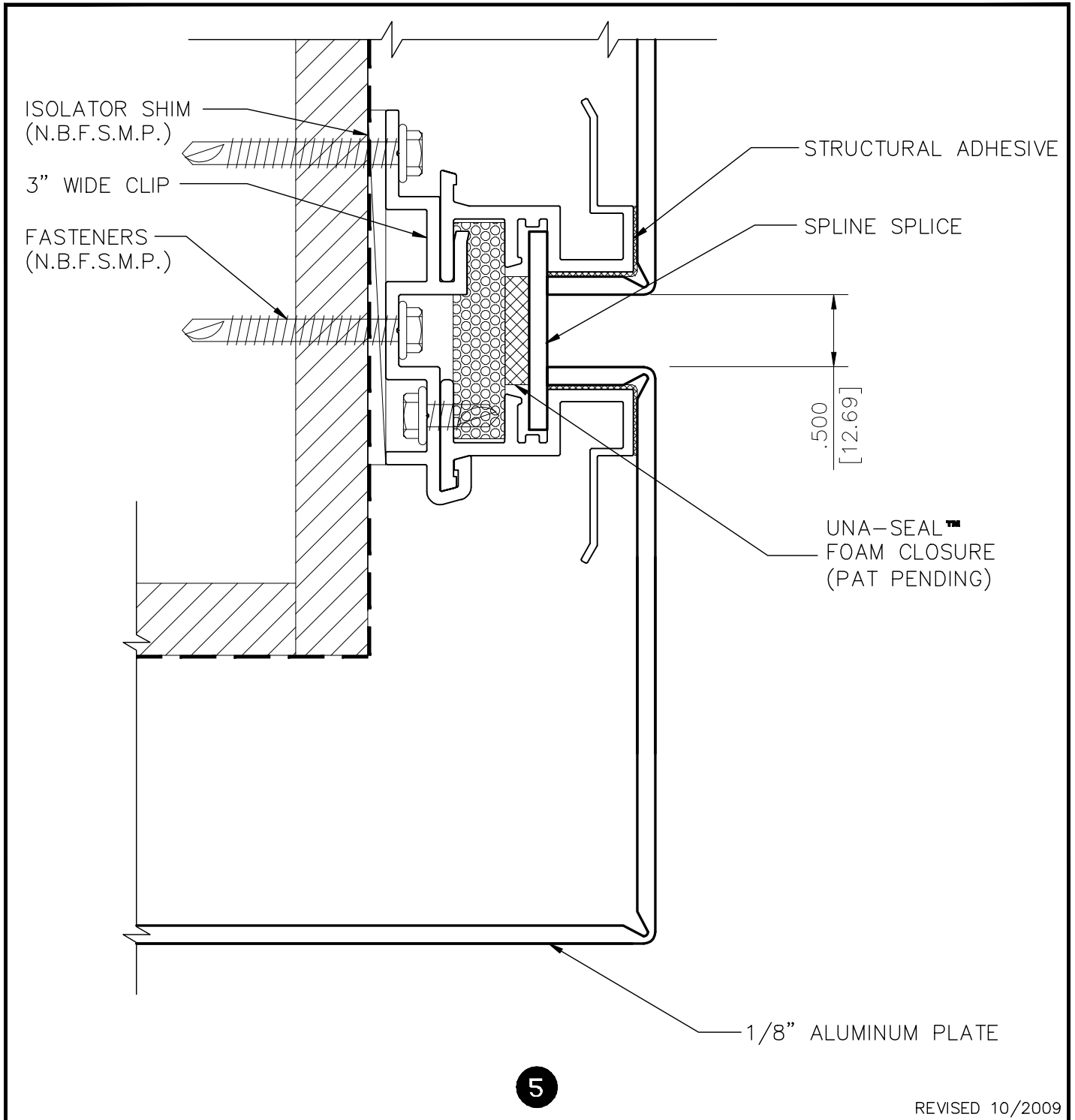
**SERIES 3200 - OUTSIDE CORNER DETAIL**

**S3200-05A**



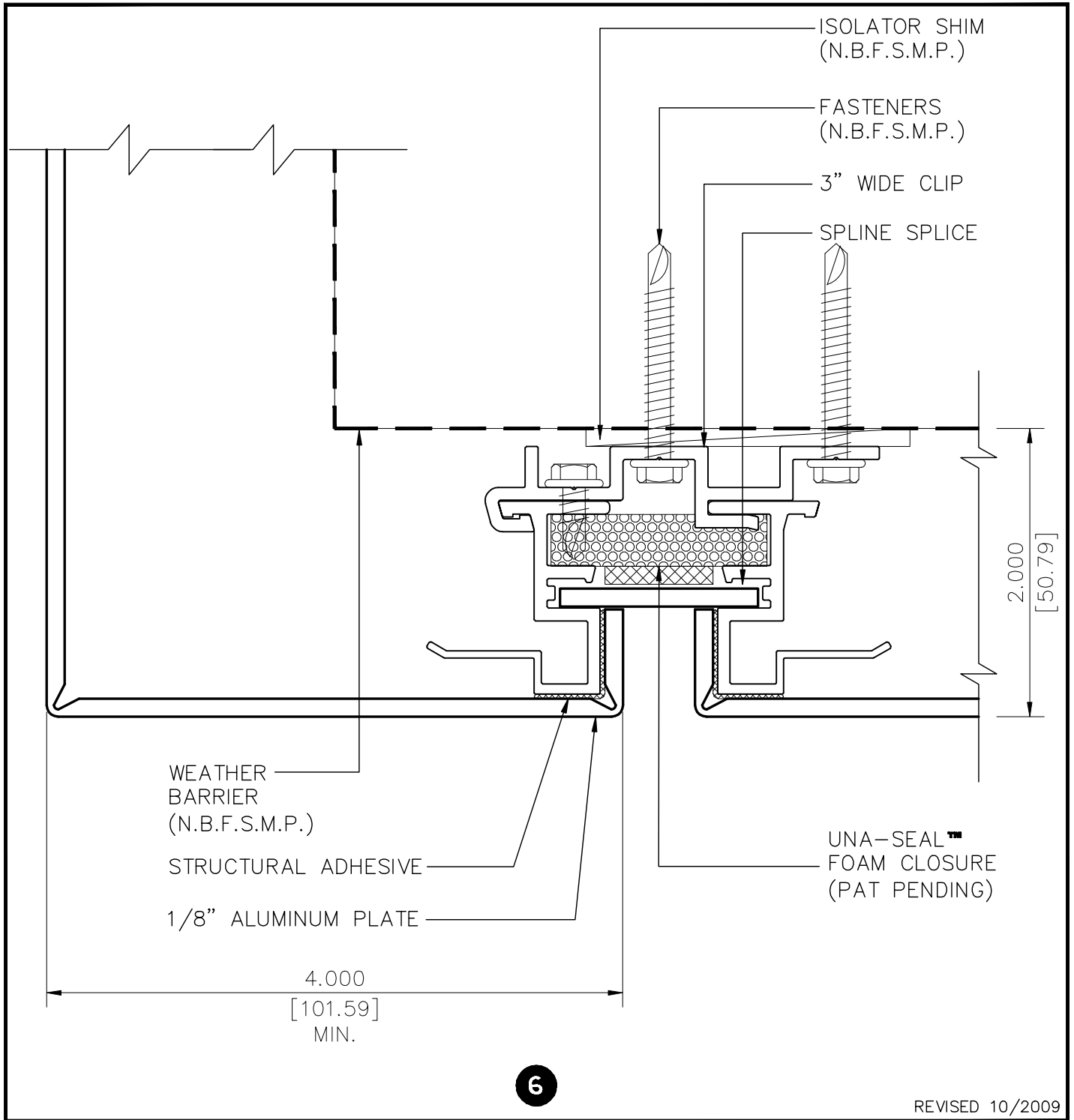
**SERIES 3200 - OUTSIDE CORNER DETAIL**

**S3200-05**

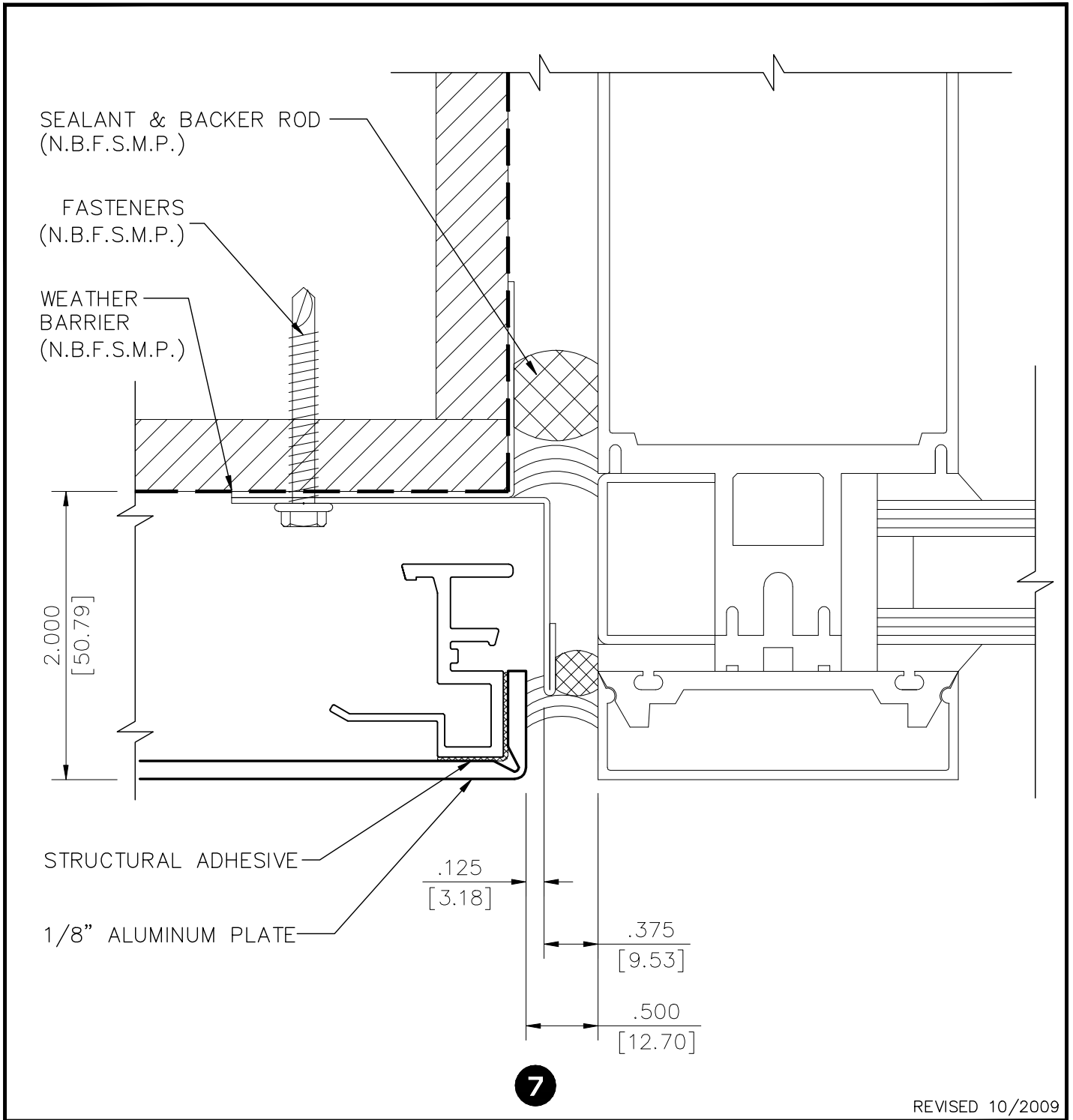


REVISED 10/2009

**SERIES 3200 - SOFFIT DETAIL S3200-06**

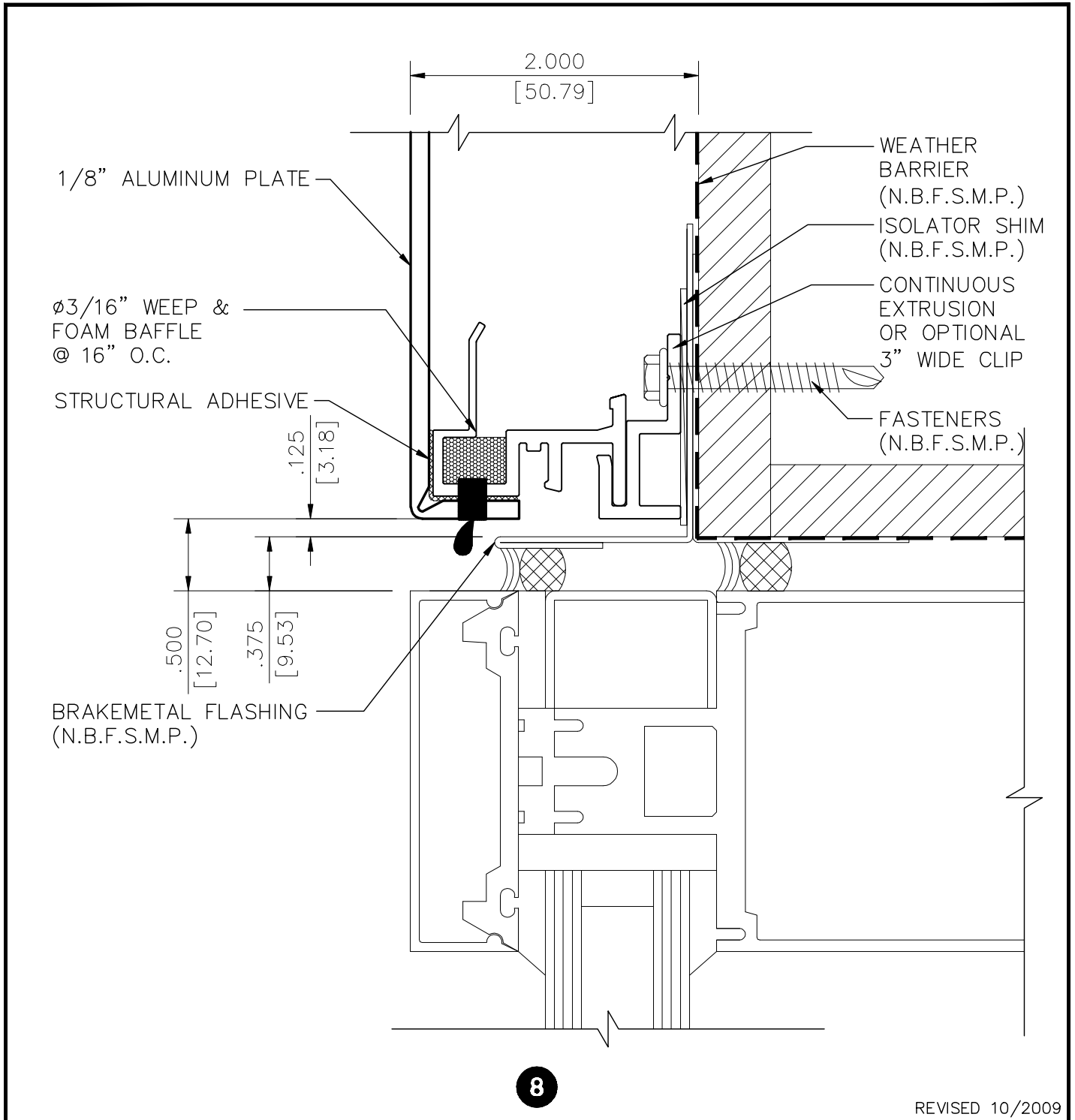


**SERIES 3200 - WINDOW JAMB DETAIL S3200-07**



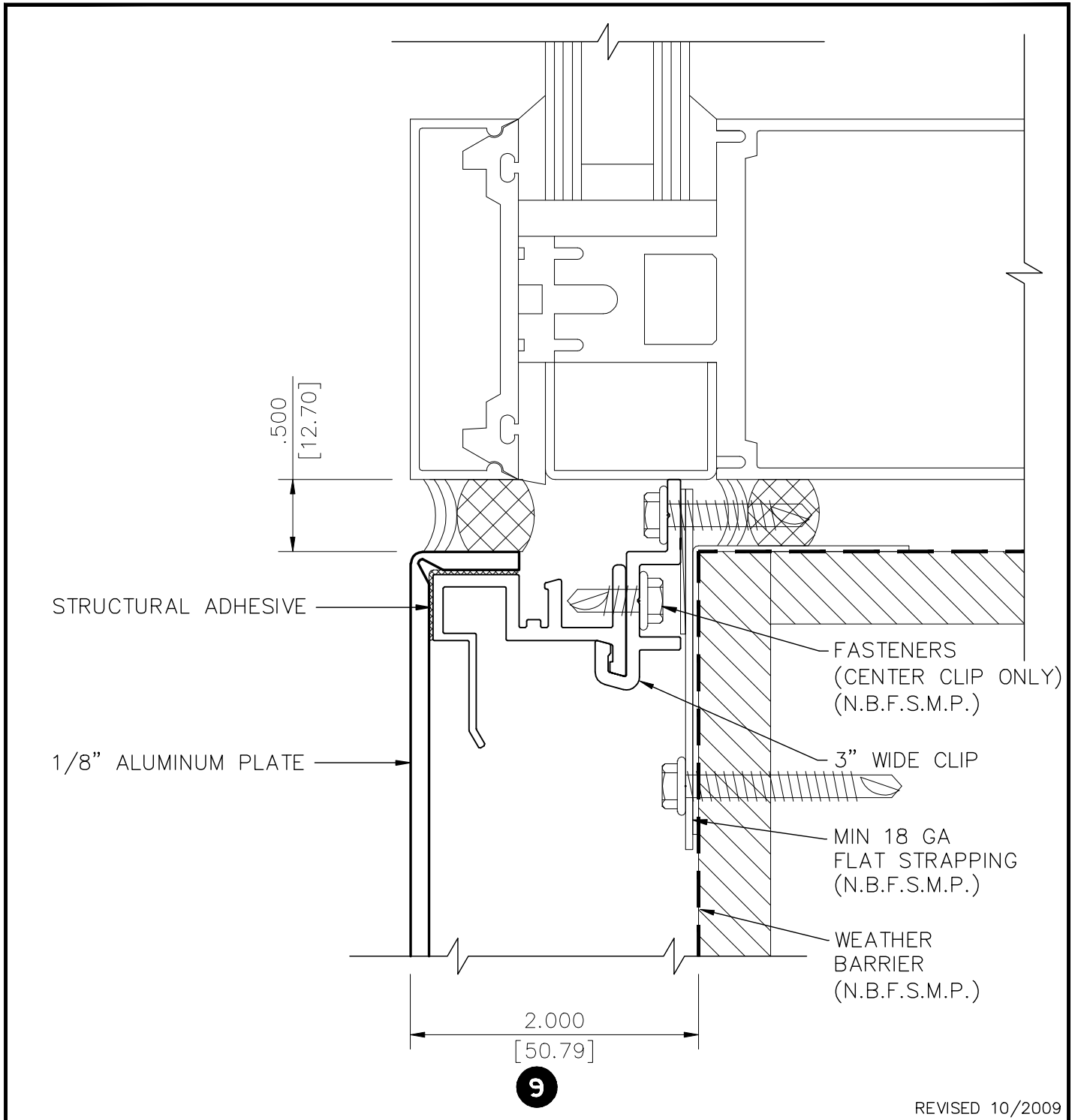
**SERIES 3200 - WINDOW HEAD DETAIL**

**S3200-08**



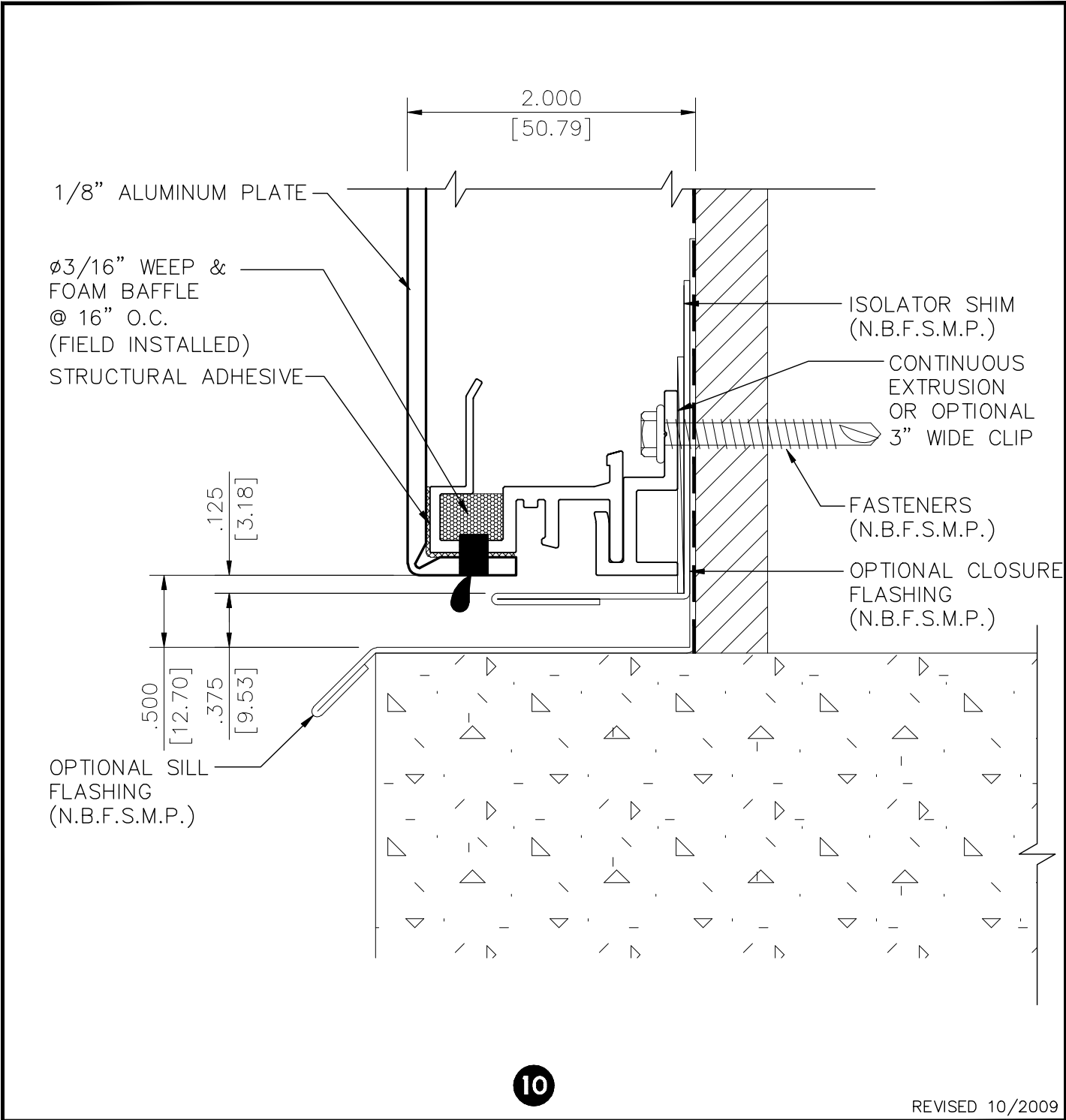
**SERIES 3200 - WINDOW SILL DETAIL**

**S3200-09**



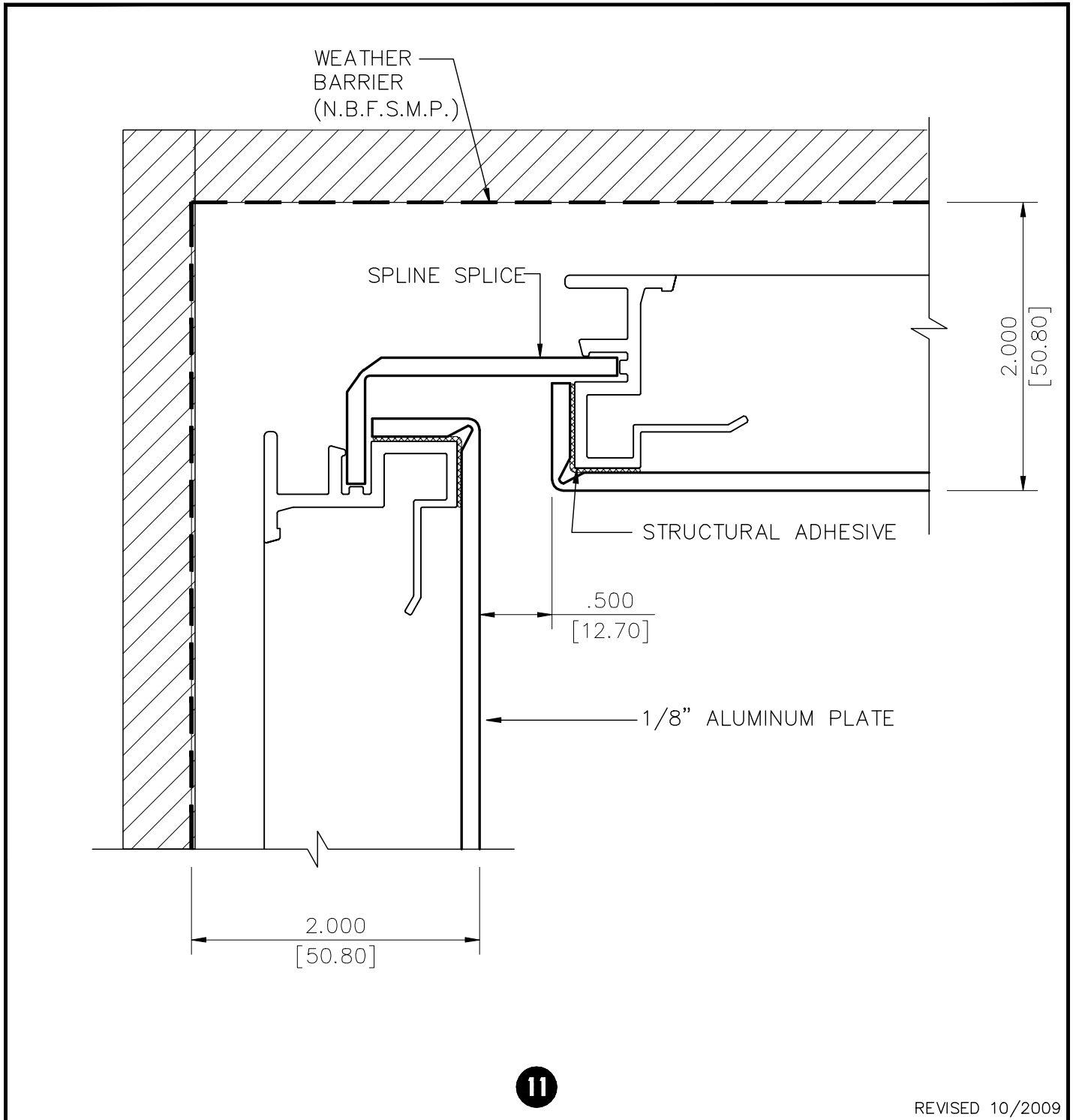
REVISED 10/2009

**SERIES 3200 - BASE DETAIL S3200-10**



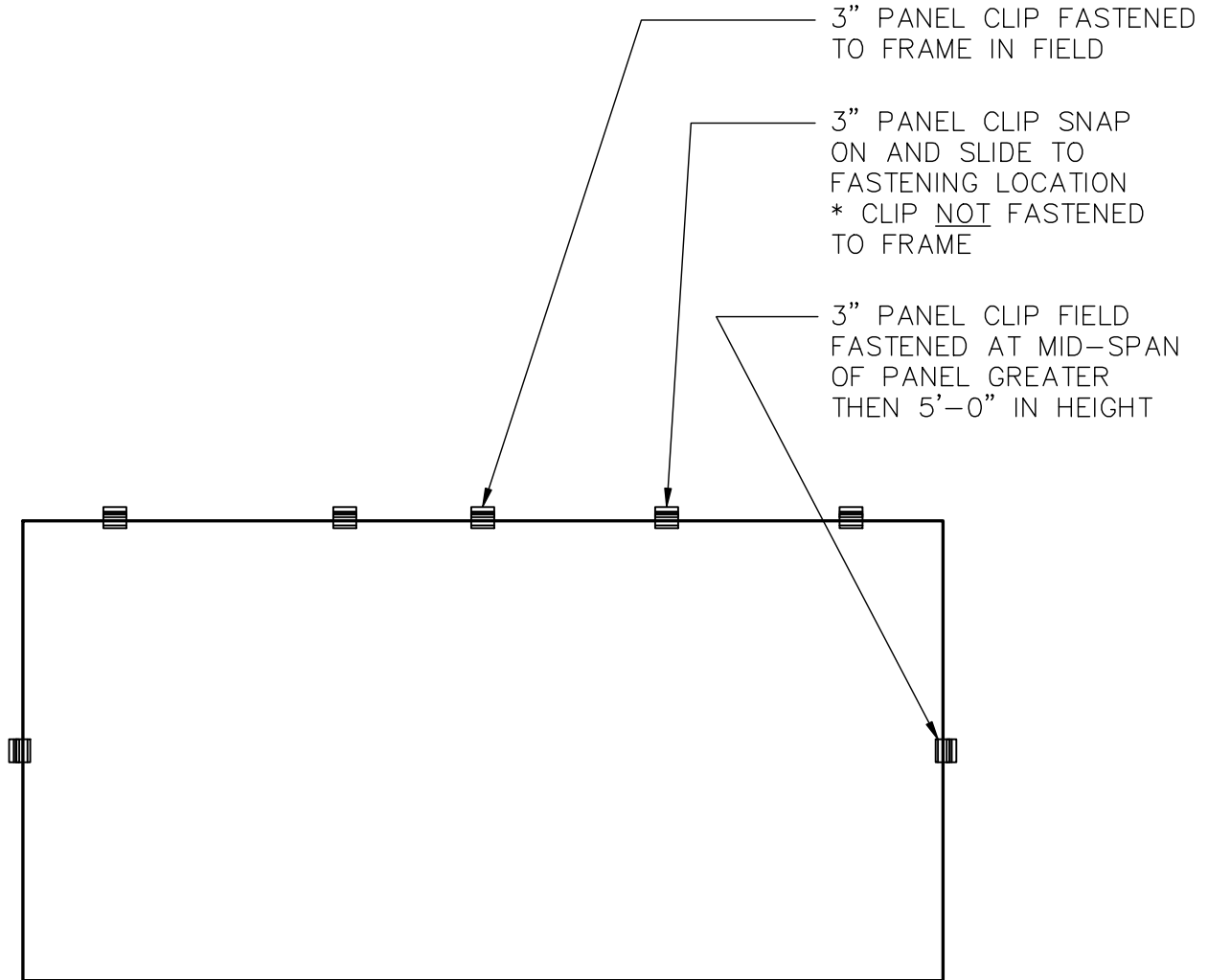
**SERIES 3200 - INSIDE CORNER DETAIL**

**S3200-11**



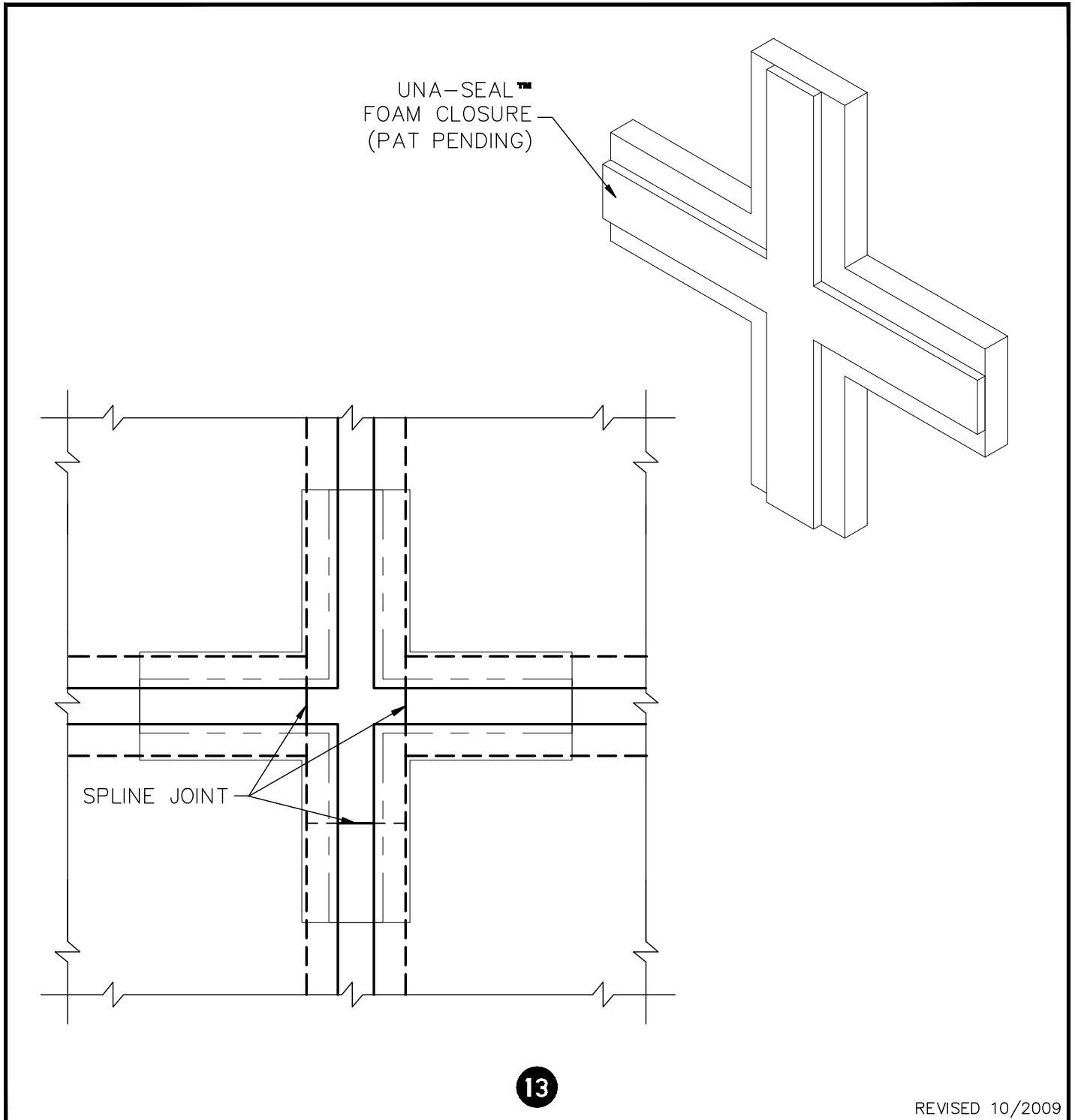
**SERIES 3200 - TYPICAL PANEL CLIP LAYOUT**

**S3200-12**



**SERIES 3200 - UNA-SEAL™ FOAM CLOSURE**

**S3200-13**





1-800-426-7737

WWW.UNACLAD.COM

## **Series 3200**

### UNA-CLAD Panel

#### **DESCRIPTION**

Aluminum plate panel system fabricated with mechanically fastened extruded perimeter frame attachment and slide clip. No exposed caulking at panel joints. Aluminum plate material spline located at panel joints. Column covers are available.

#### **FEATURES**

- reveal spline at panel joints is adjustable from .50" on up
- spline material fabricated from the same color as panels or contrasting color
- extruded perimeter frame
- snap on and slide clip attachment
- flatness
- narrow dimension to 58 inches
- bent shapes available

#### **MATERIAL OPTIONS**

- .125" and .090" material thickness

#### **FINISH OPTIONS**

- Kynar 500®/Hylar 5000® high performance fluorocarbon resinous coatings
- anodized
- class I and II batch anodized