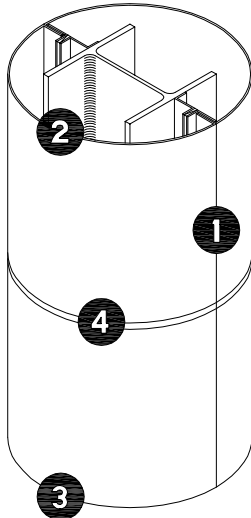


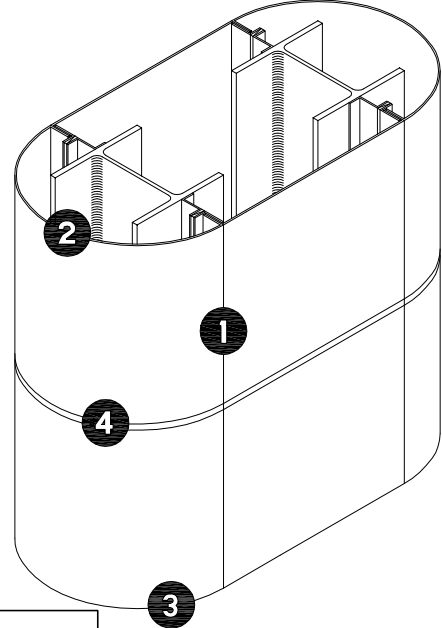
SERIES 200 - COLUMN OPTIONS

S200-00

ROUND COLUMN COVER

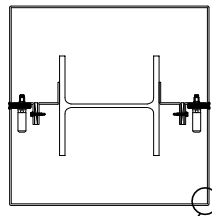
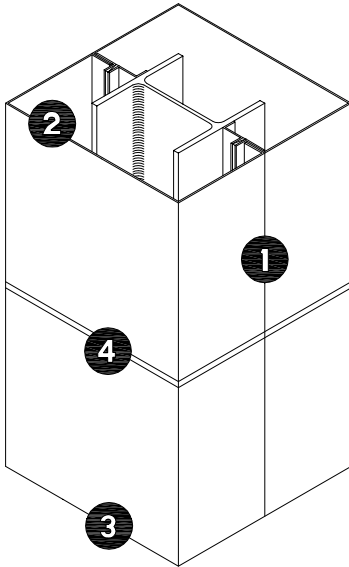


OBLONG COLUMN COVER

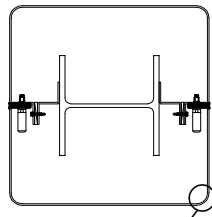


- 1 VERTICAL JOINT DETAIL
- 2 COLUMN HEAD DETAIL
- 3 BASE DETAIL
- 4 HORIZONTAL JOINT DETAIL

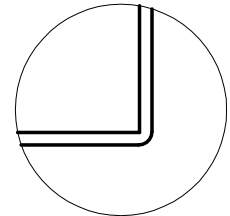
SQUARE COLUMN COVER



DETAIL B

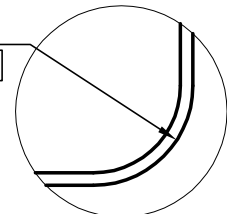


DETAIL C



SQUARE CORNER OPTION
DETAIL B

R1.000
[R25.40]

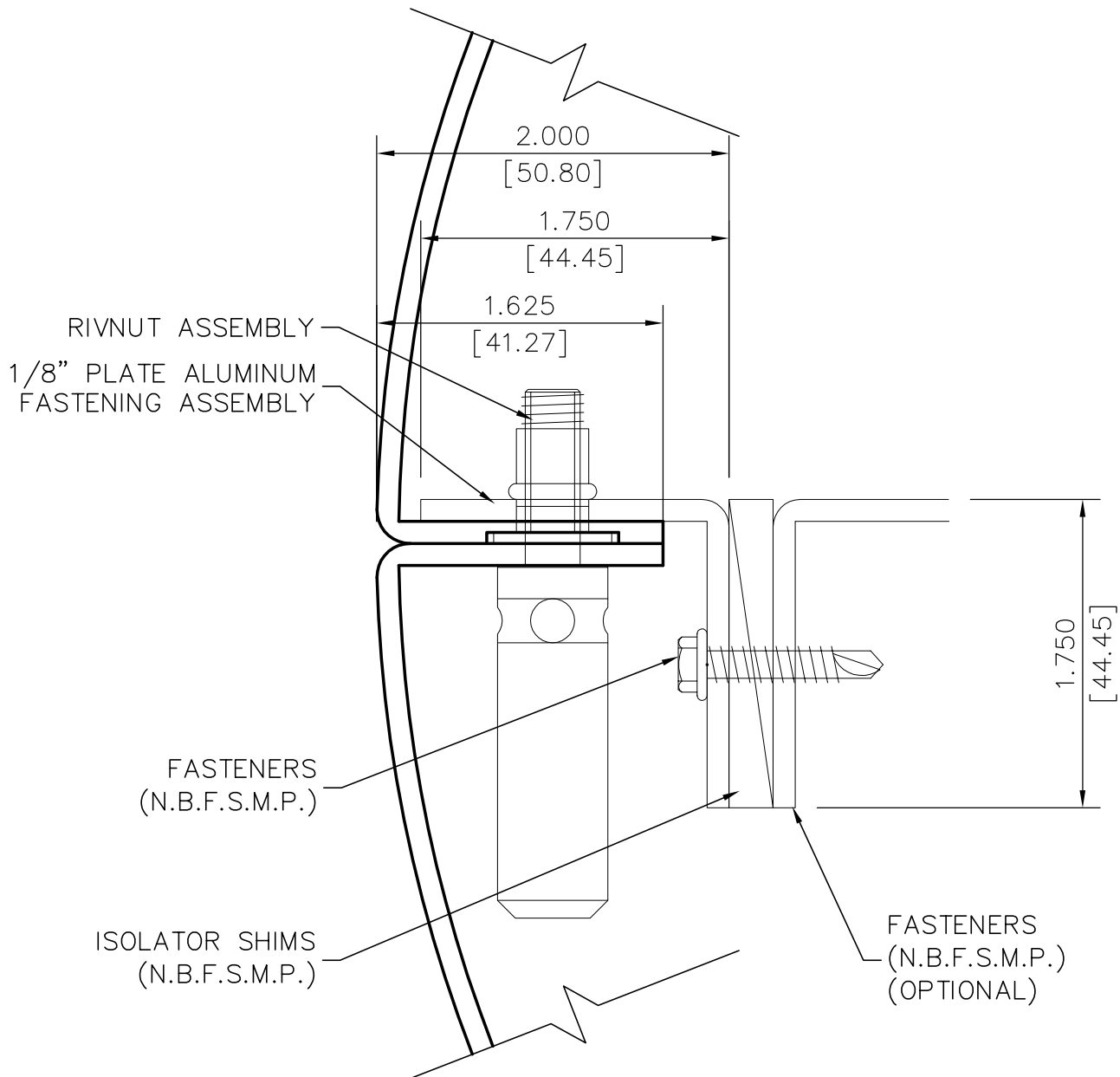


RADIUSED CORNER OPTION
DETAIL C

REVISED 12/2008

SERIES 200 - VERTICAL JOINT DETAIL

S200-01

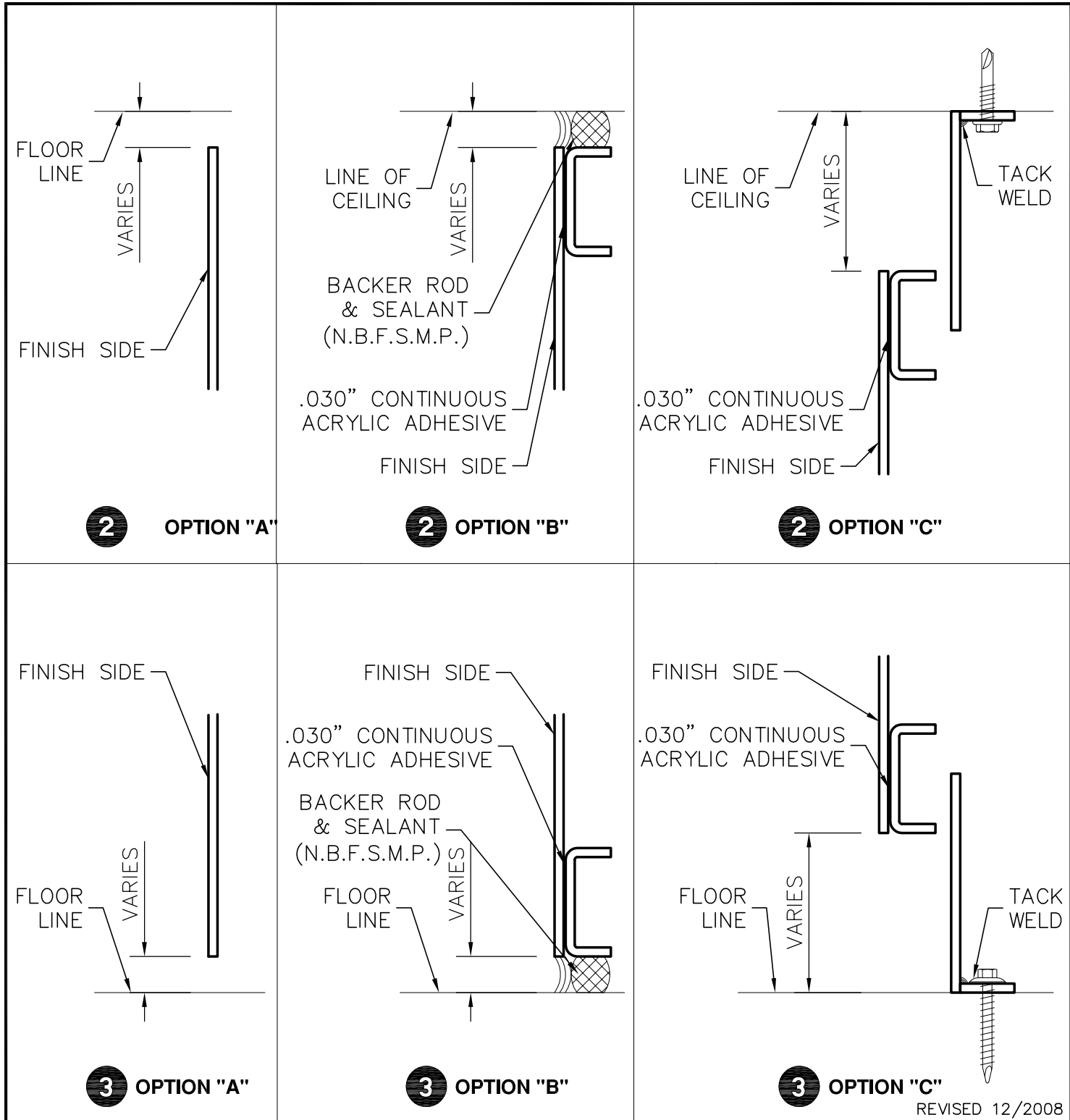


1

REVISED 12/2008

SERIES 200 - HEAD / BASE DETAIL

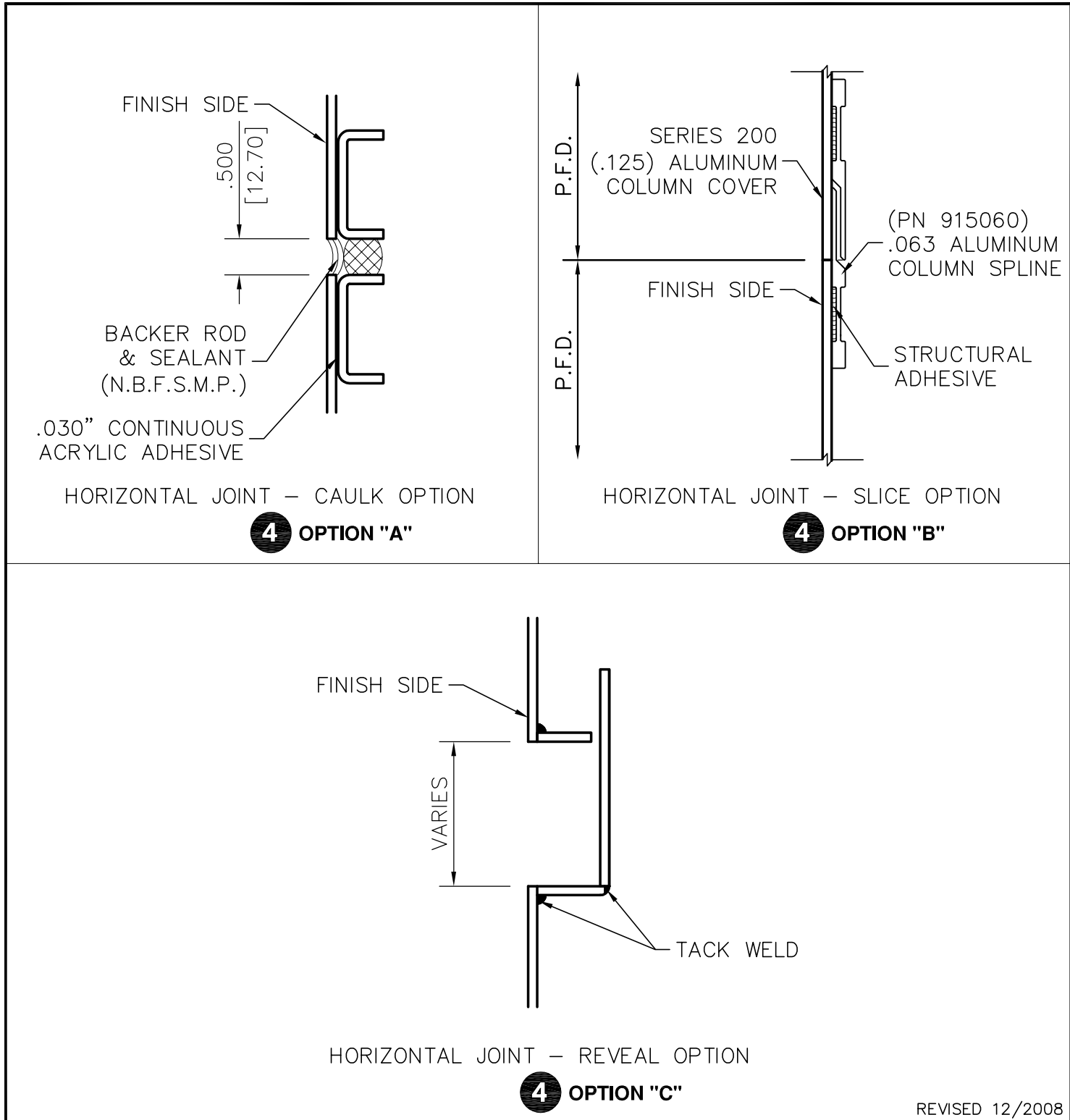
S200-02



REVISED 12/2008

SERIES 200 - HORIZONTAL JOINT DETAIL

S200-03



REVISED 12/2008



1-800-426-7737 WWW.UNACLAD.COM

Series 200 UNA-FAB Column Cover

DESCRIPTION

Column covers are fabricated in round, square, rectangular, and oblong configurations. Convert unfinished concrete columns, I-beams, or corner conditions to enhance the appearance of the building. New installer friendly alignment pin allows for final adjustment at the hairline joint with out removal of column section.

FEATURES

- 16-foot columns in one section
- custom colors and finishes
- simple installation (patent pending easy alignment pin)
- flexible design parameters
- custom top and bottom reveals available
- hairline joint

MATERIAL OPTIONS

- .080, .090, .125, and .190 aluminum plate
- 3-mm, 4-mm and 6-mm composite material
- natural metals

FINISH OPTIONS

- Kynar 500®/Hylar 5000® high performance fluorocarbon resinous coatings
- anodized
- natural metals

LIMITATIONS

- 5-inch minimum radius
- 1-inch top clearance required