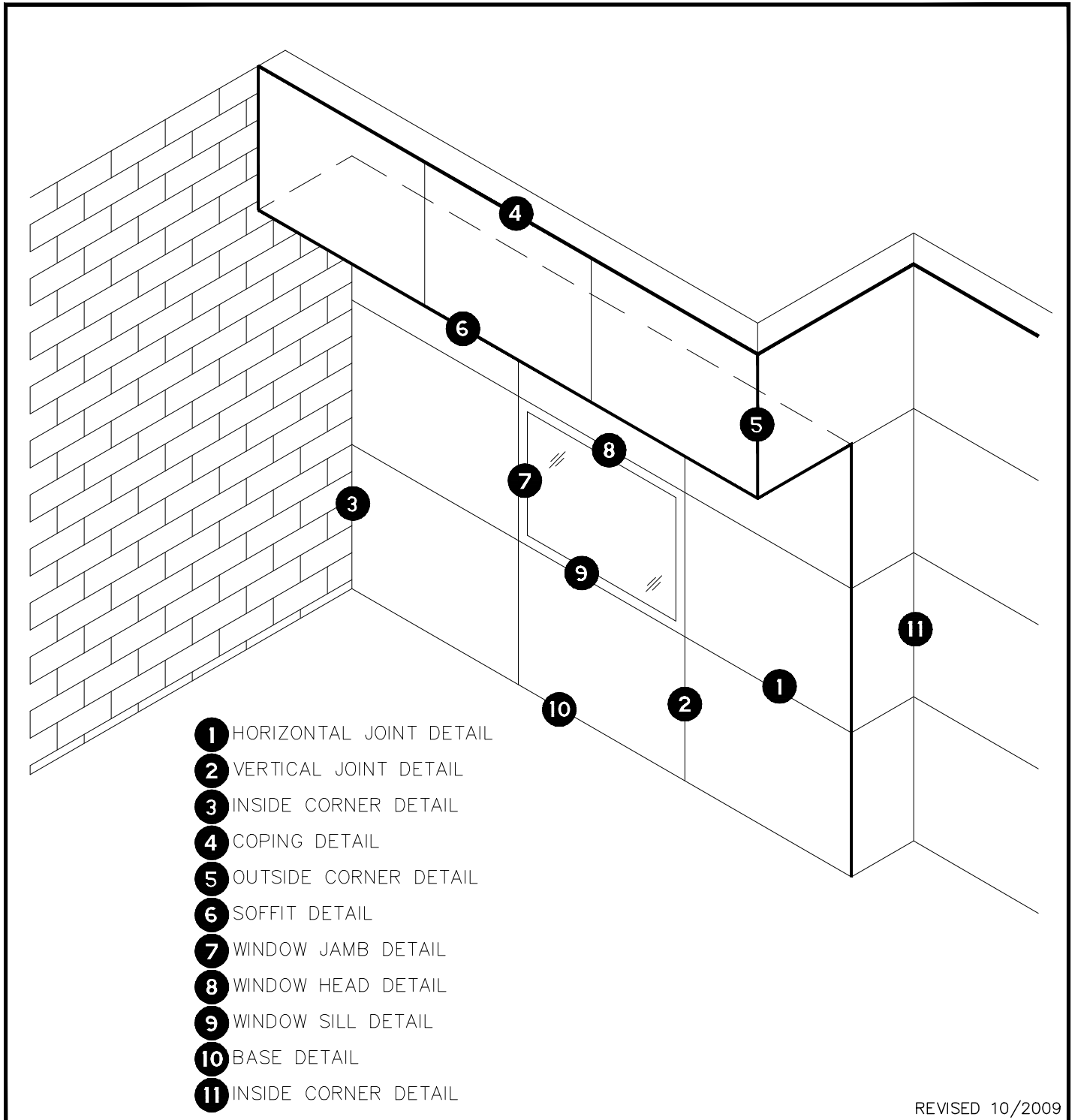


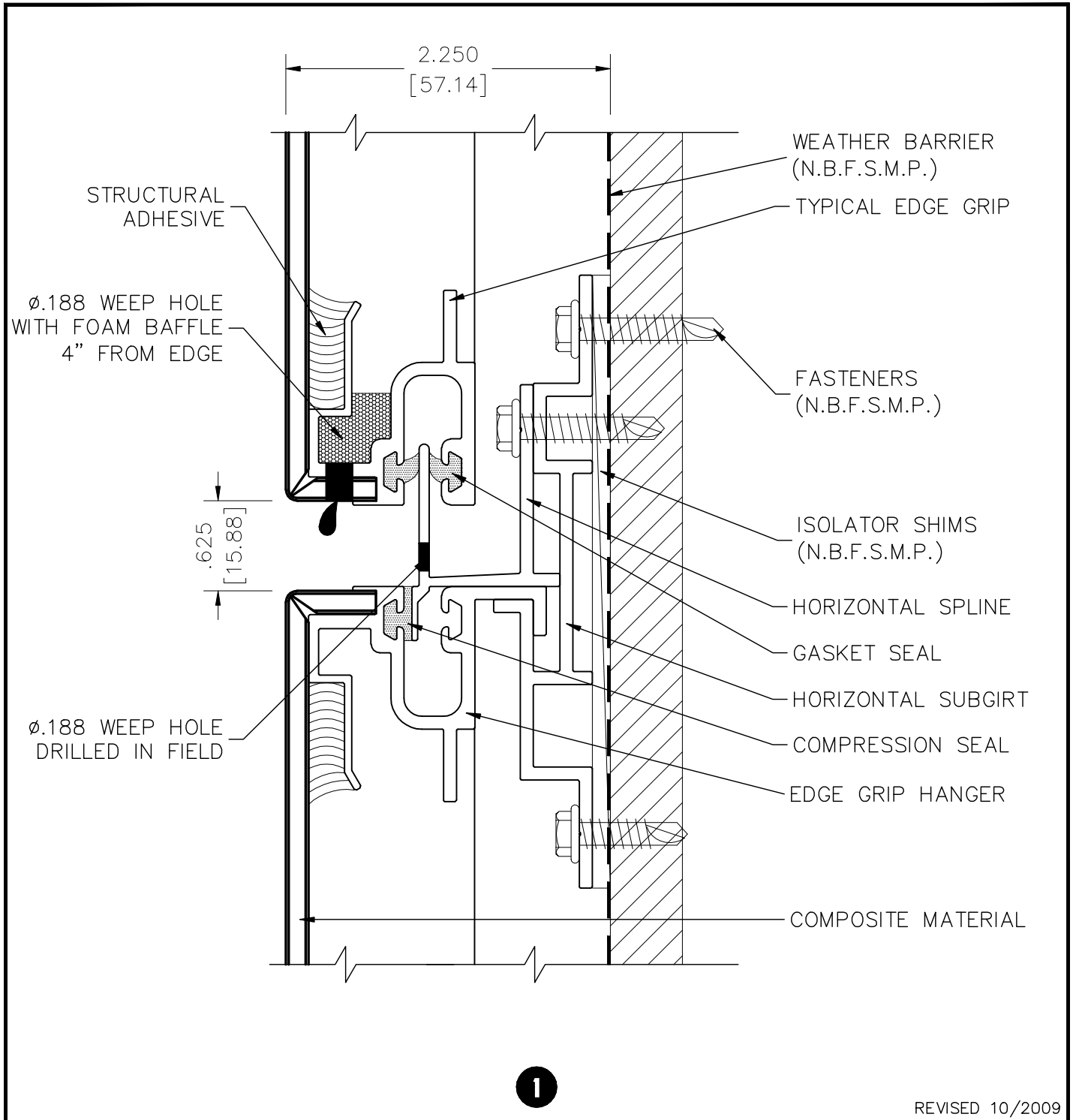
**SERIES 1500 UNA-CLAD PANEL INDEX**

**S1500-00**

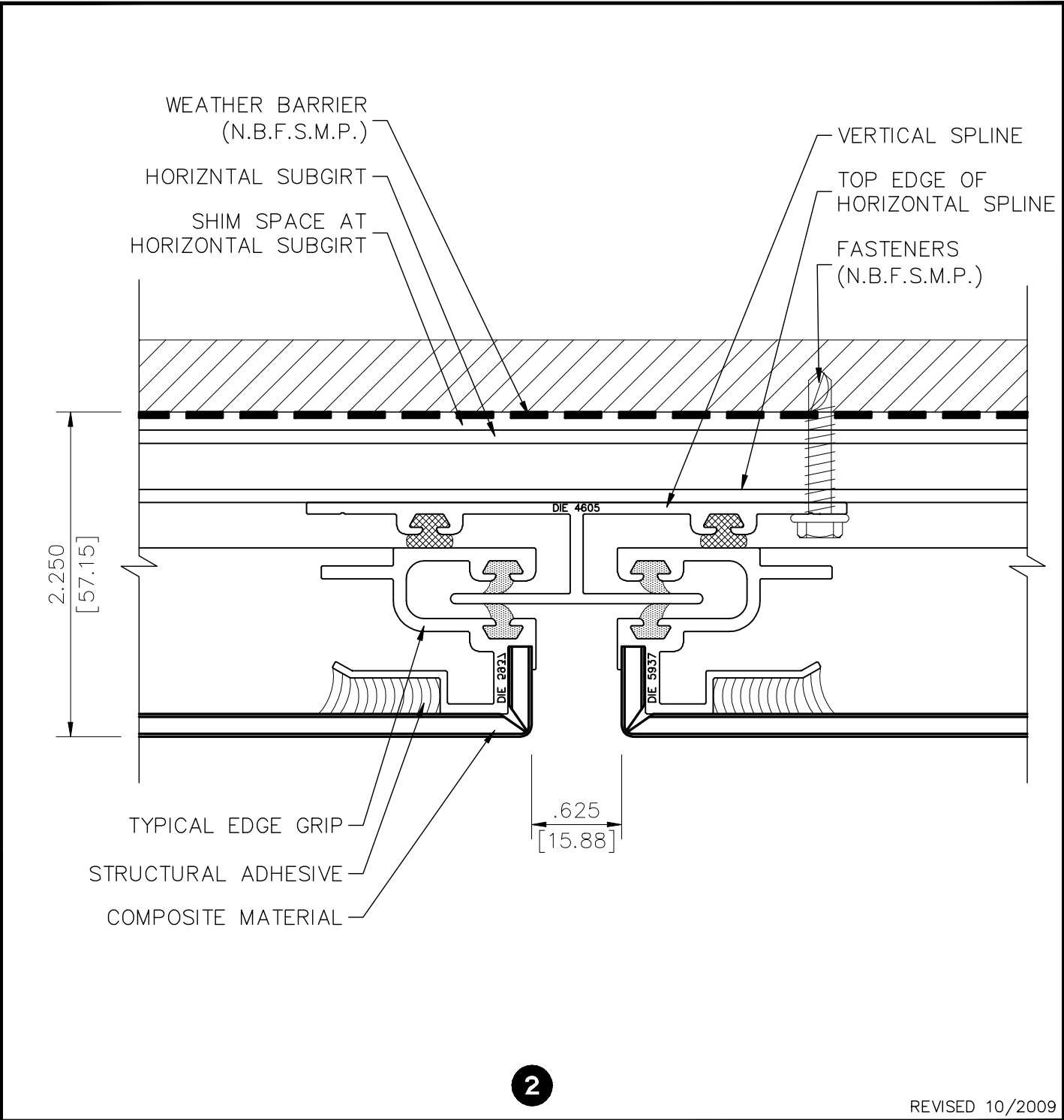


**SERIES 1500 - HORIZONTAL JOINT DETAIL**

**S1500-01**

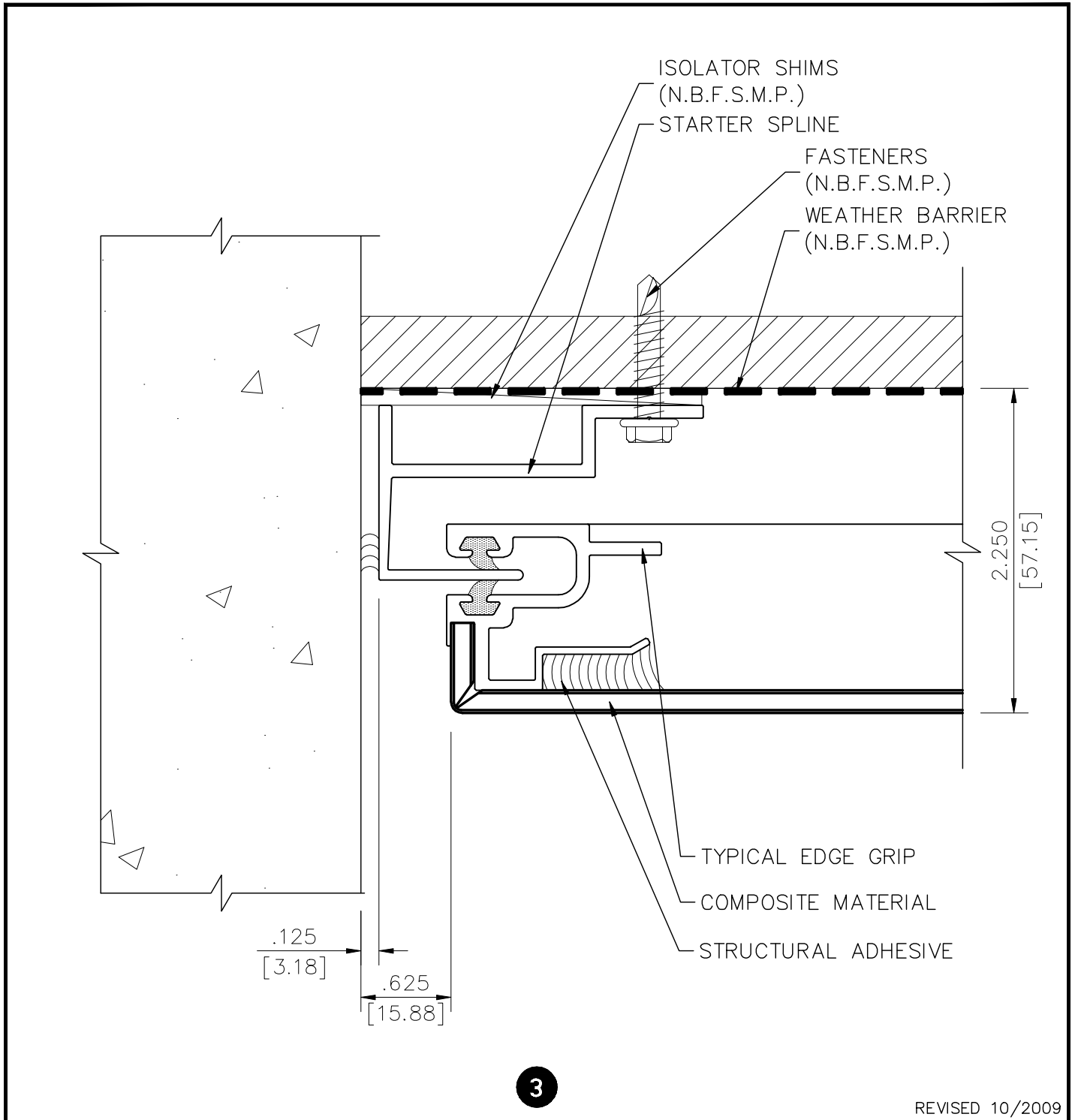


**SERIES 1500 - VERTICAL JOINT DETAIL S1500-02**



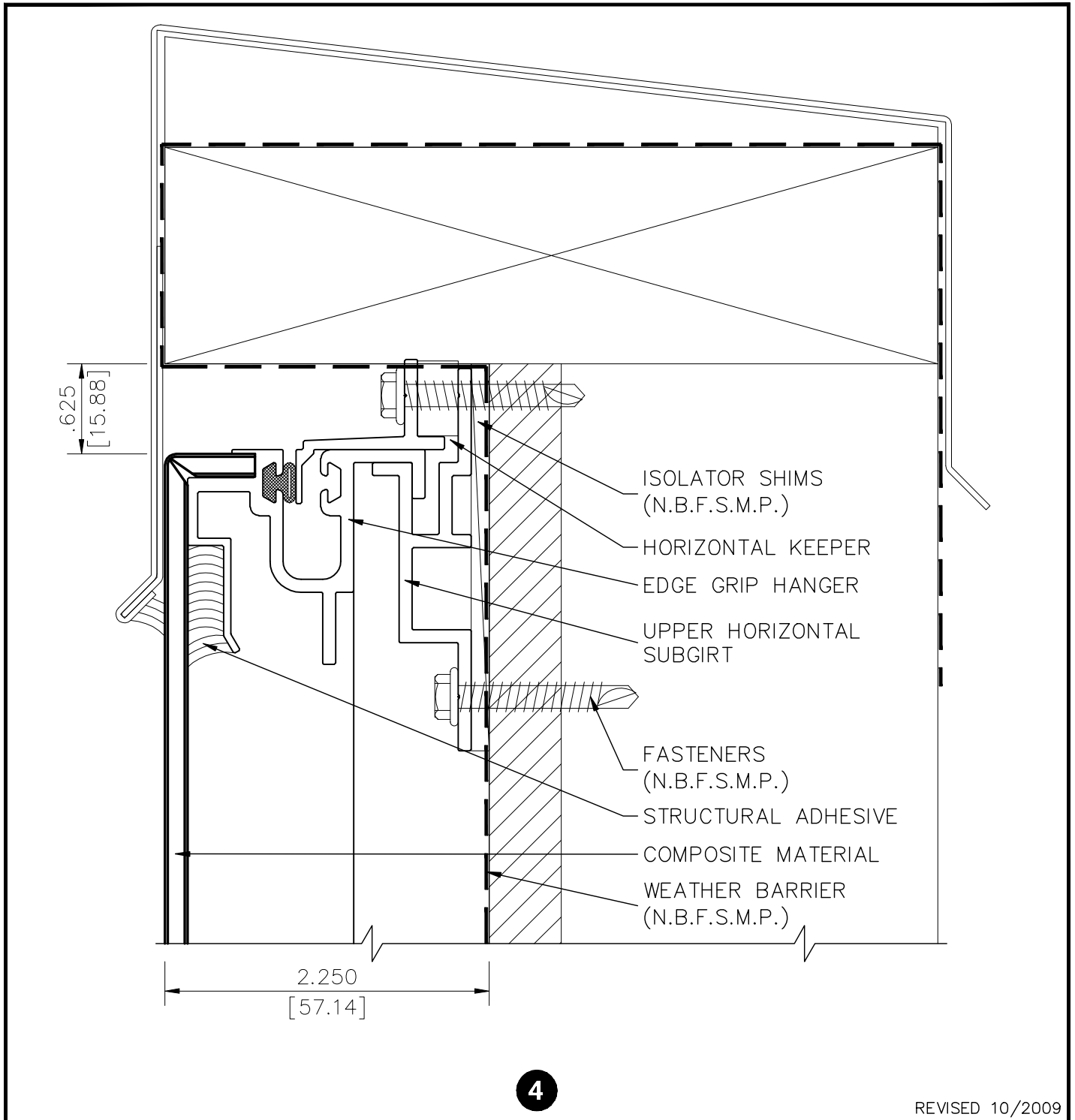
**SERIES 1500 - INSIDE CORNER DETAIL**

**S1500-03**

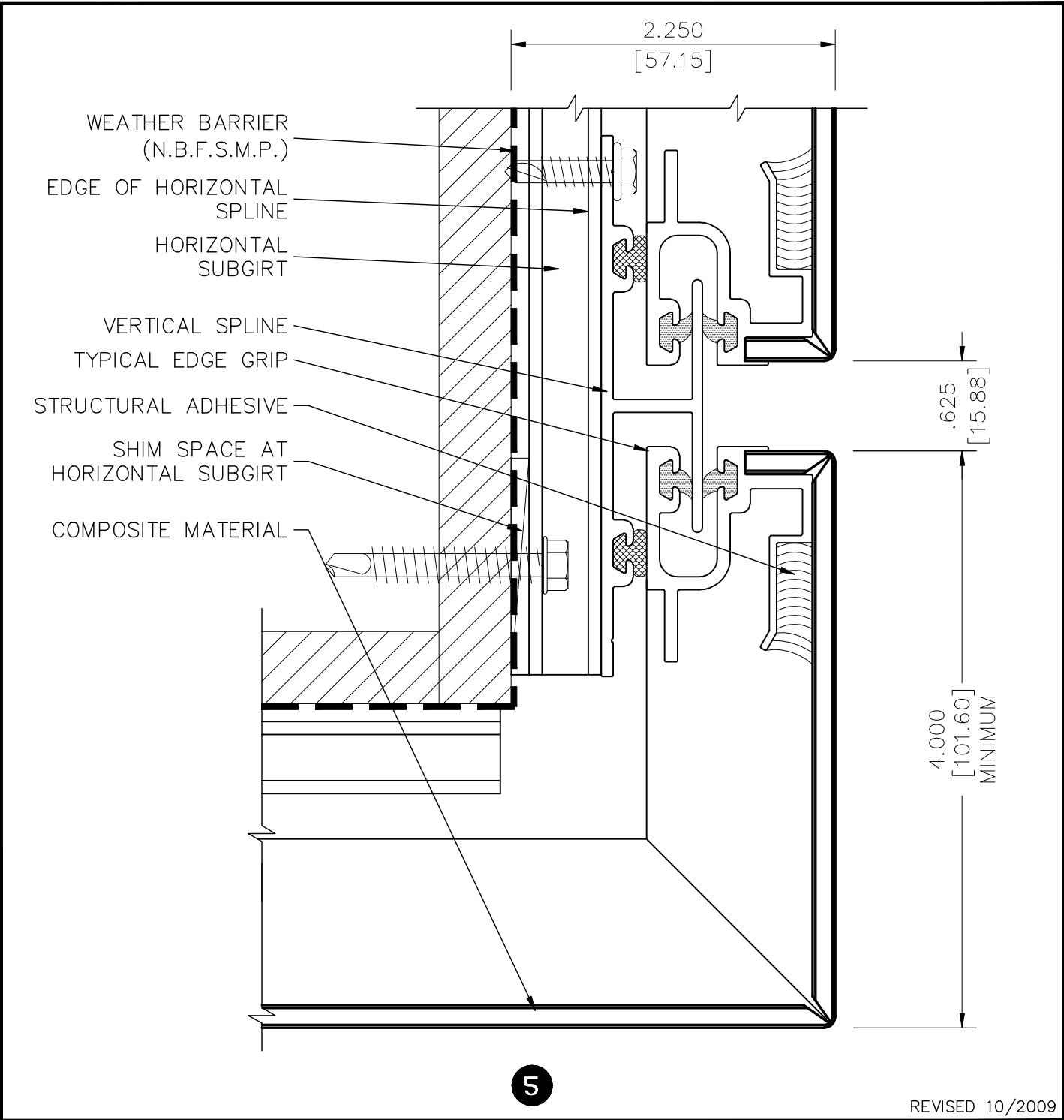


**SERIES 1500 - COPING DETAIL**

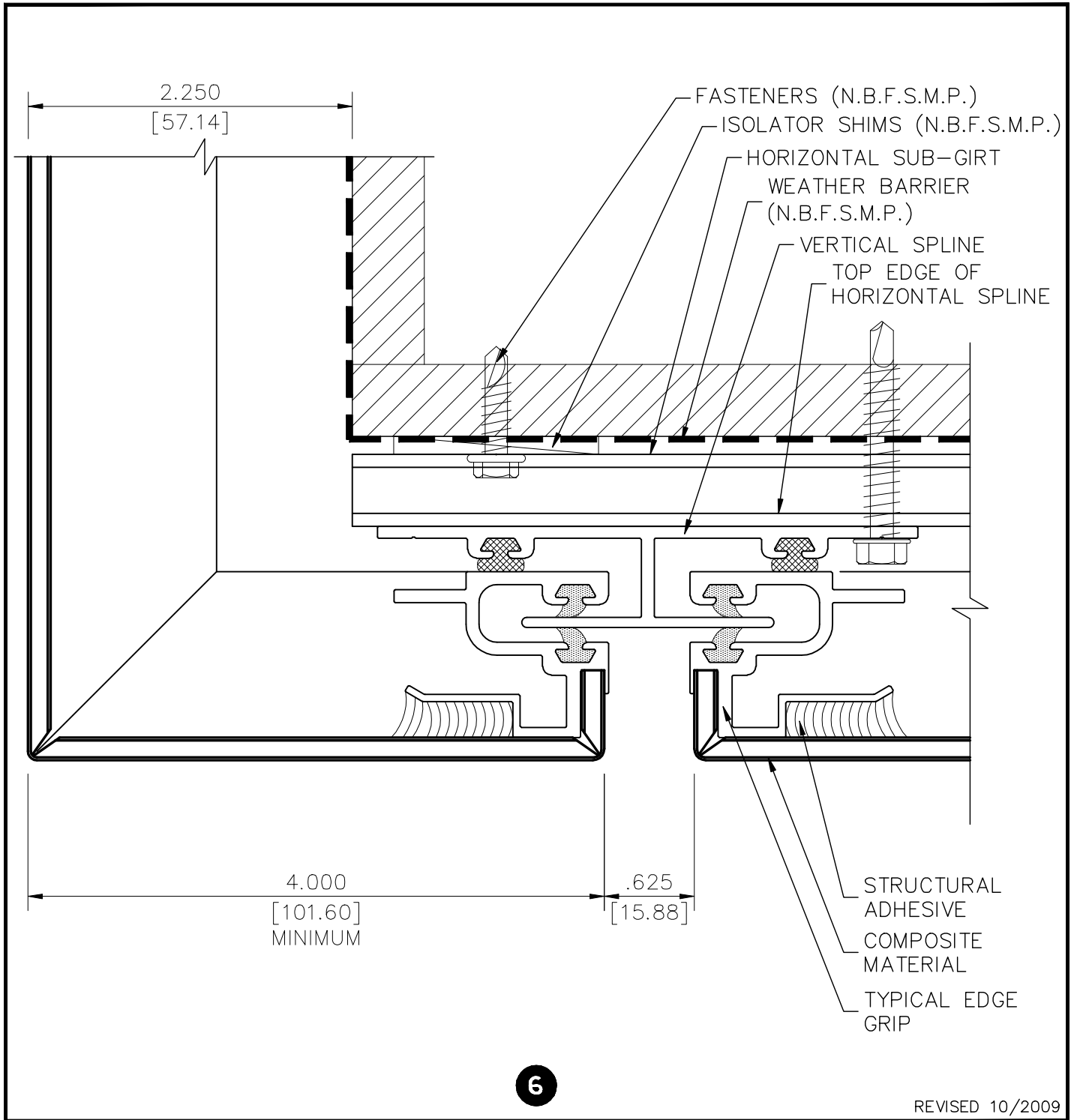
**S1500-04**



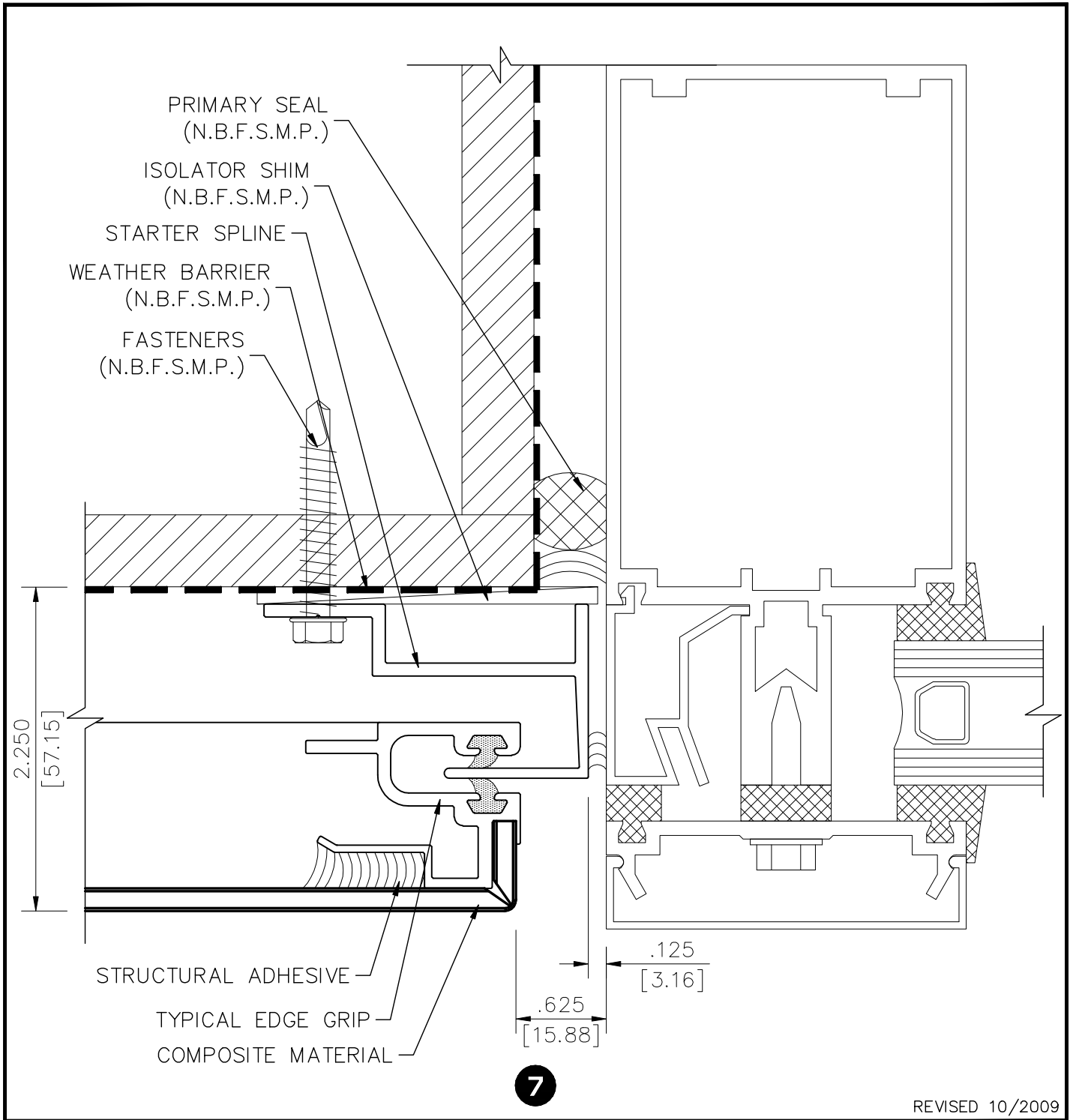
**SERIES 1500 - OUTSIDE CORNER DETAIL S1500-05**



**SERIES 1500 - SOFFIT DETAIL S1500-06**

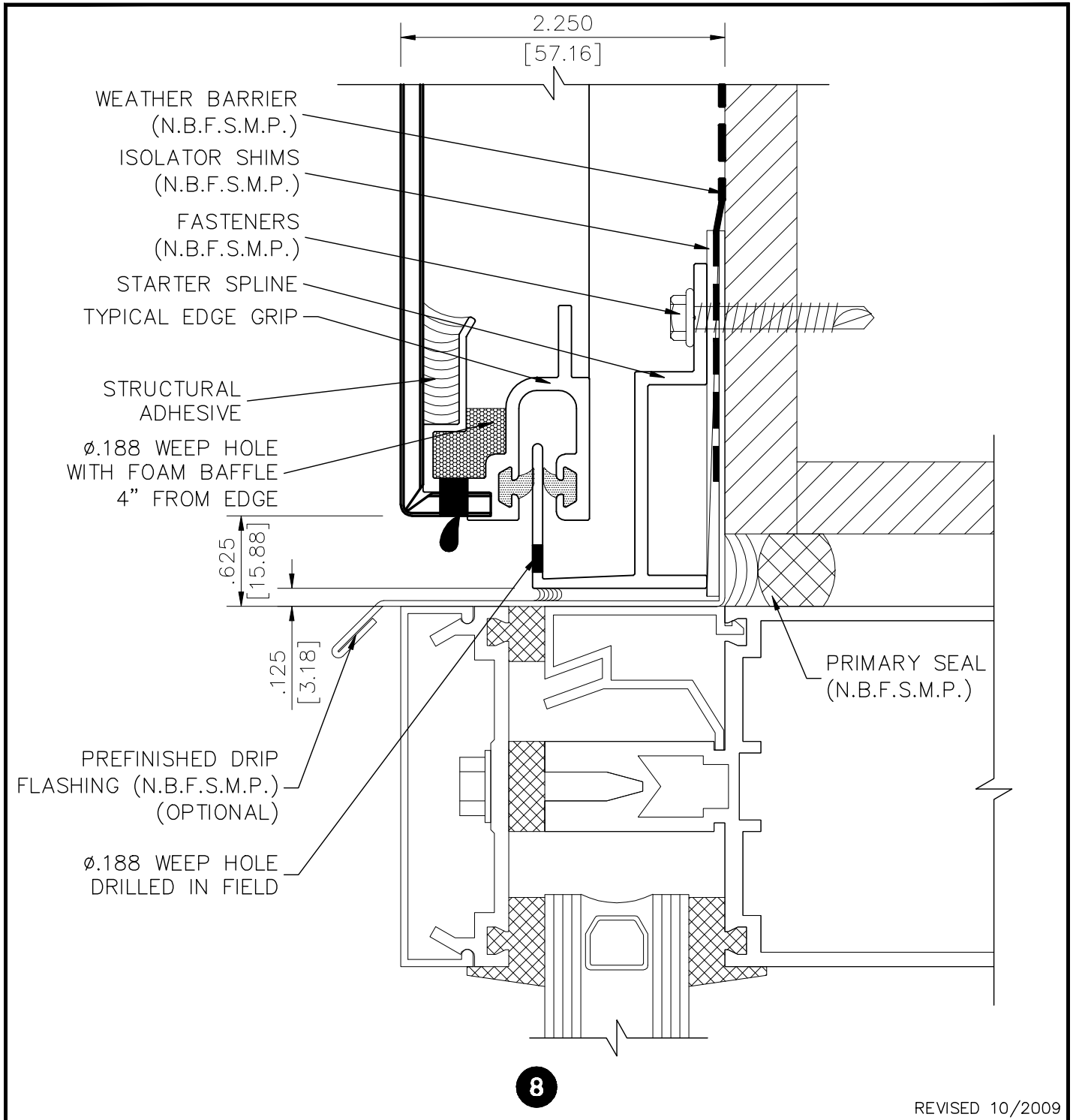


**SERIES 1500 - WINDOW JAMB DETAIL S1500-07**

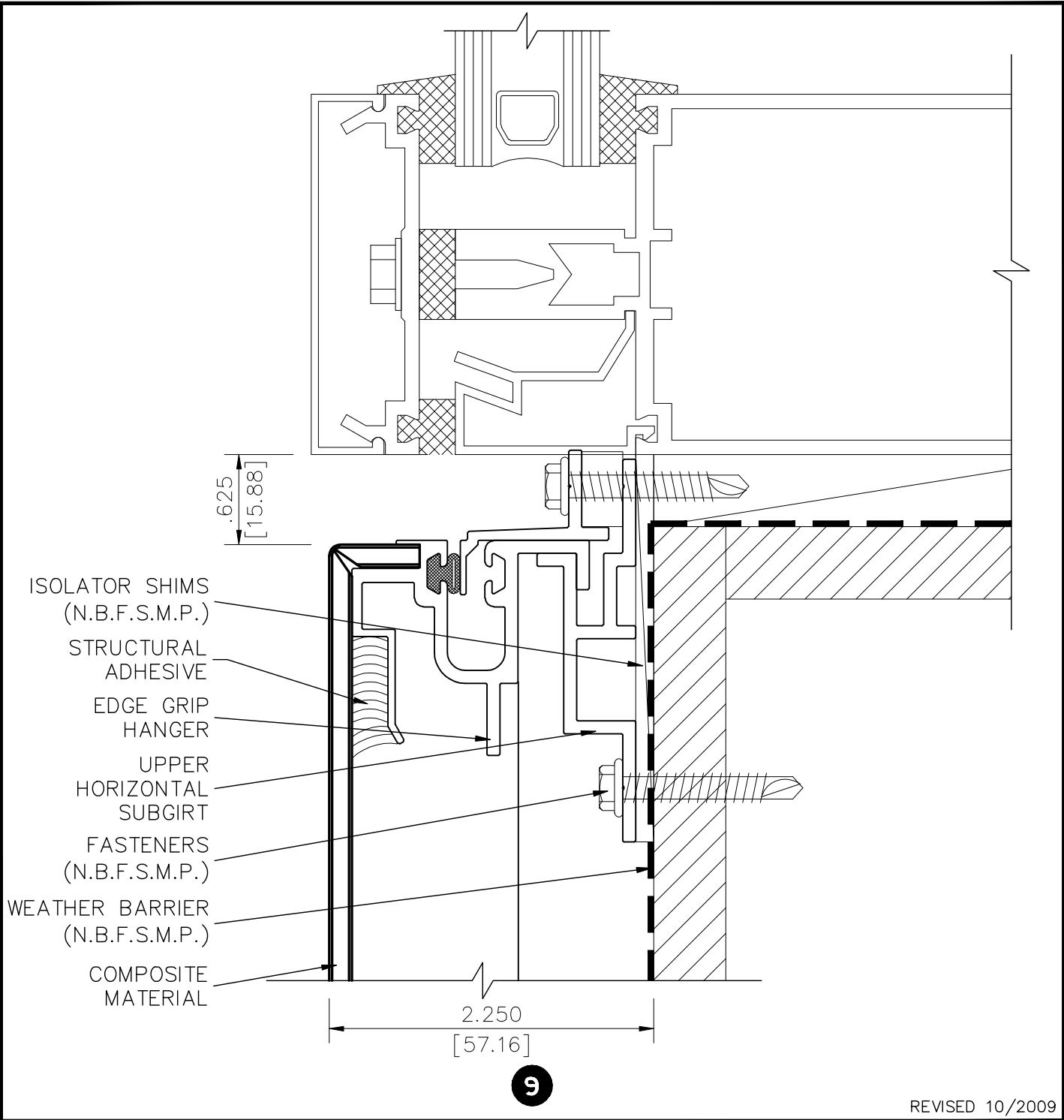


**SERIES 1500 - WINDOW HEAD DETAIL**

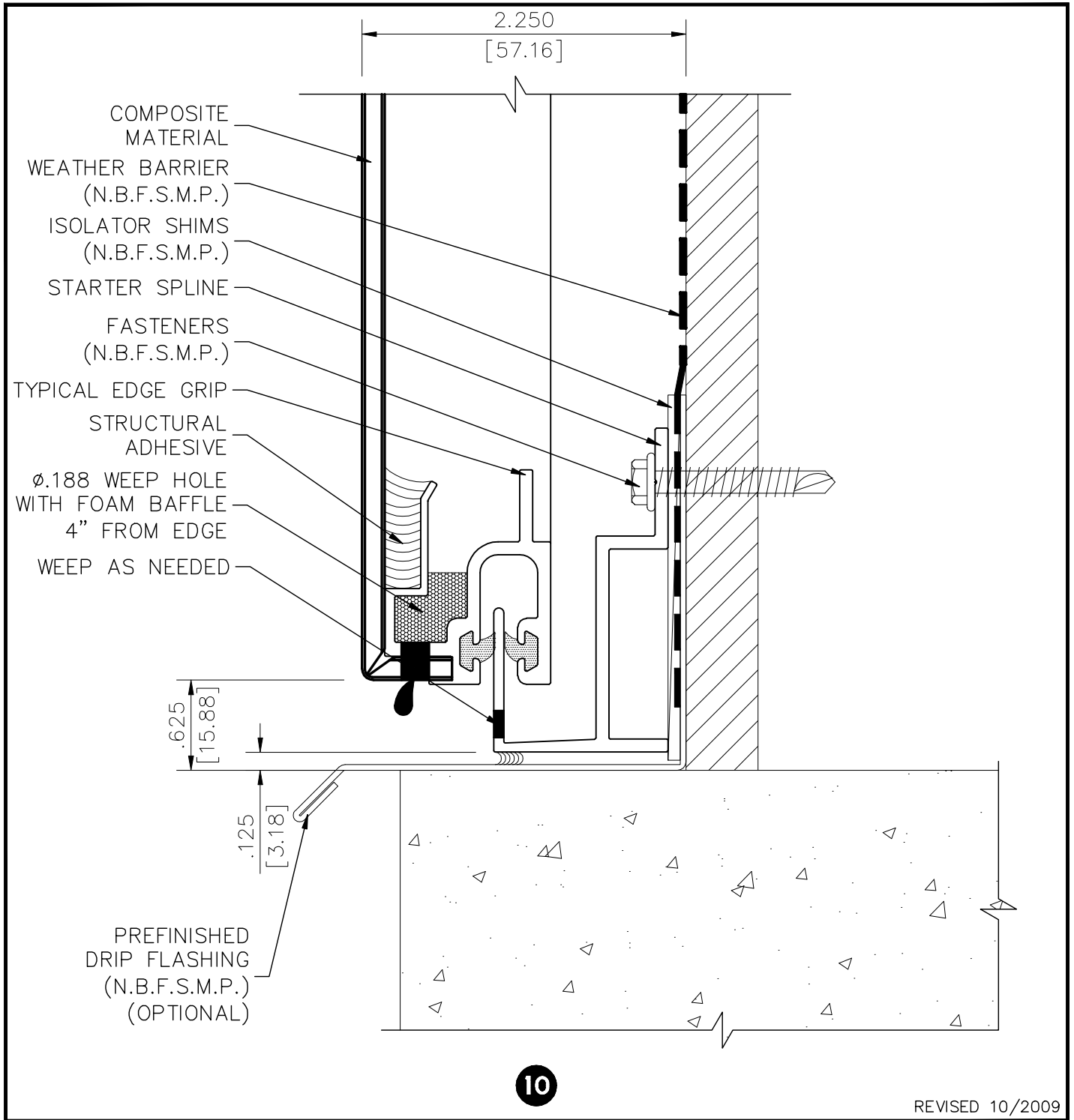
**S1500-08**



**SERIES 1500 - WINDOW SILL DETAIL S1500-09**

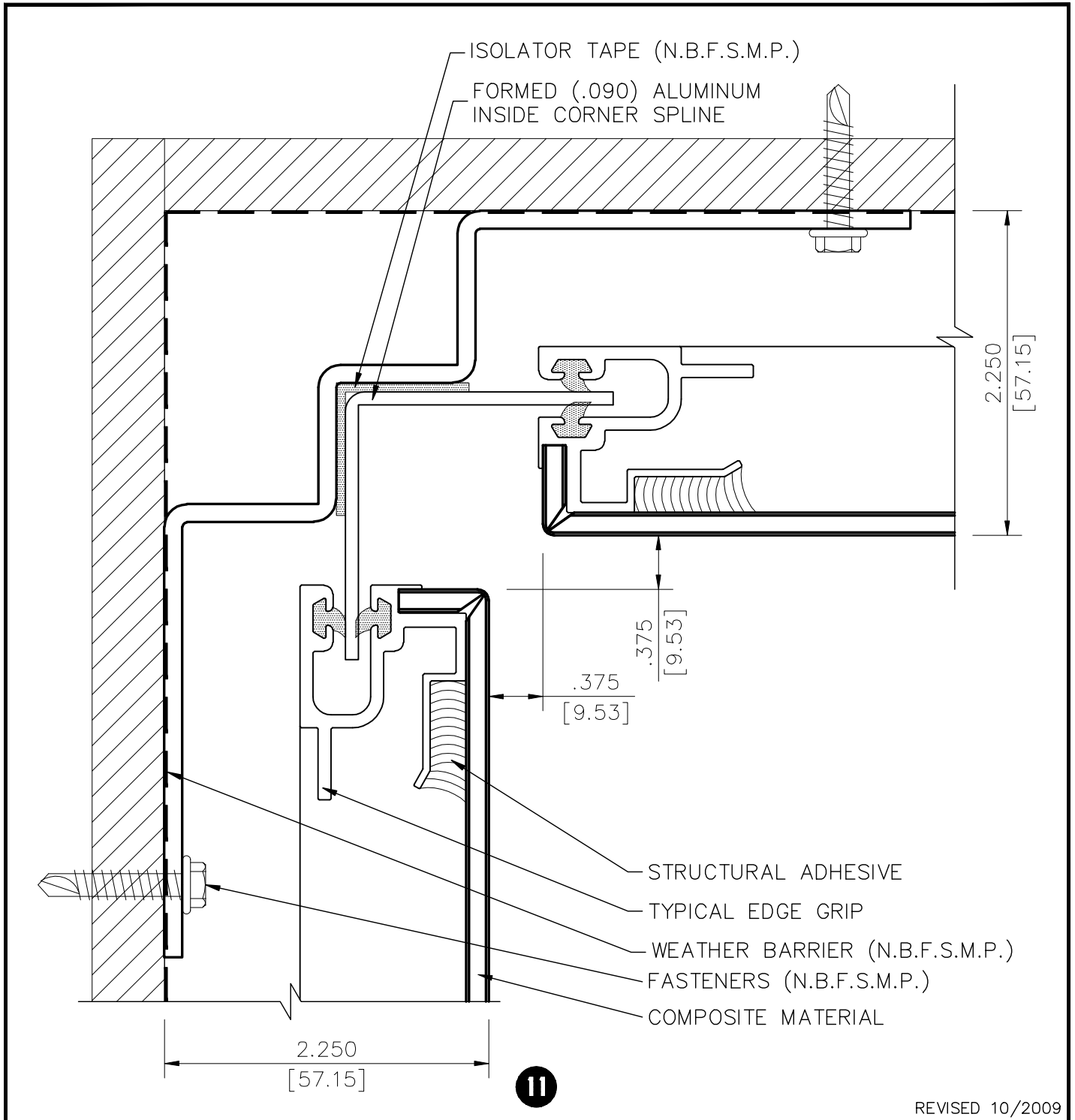


**SERIES 1500 - BASE DETAIL S1500-10**



**SERIES 1500 - INSIDE CORNER DETAIL**

**S1500-11**





1-800-426-7737

WWW.UNACLAD.COM

## **Series 1500**

### UNA-CLAD Panel

#### **DESCRIPTIONS**

High performance system of composite material using extruded aluminum framing, subgirts and splines. A guttered system that has weeps at every horizontal joint. System is gasketed for "dry joints" without use of exposed sealant. Joint and perimeter frame color may vary from that of panel face.

#### **FEATURES**

- excellent seismic performance
- large flat panels up to 60 inches wide
- free-floating panels to prevent structural movement from imposing load to panel face
- reveal joints
- no exposed sealants
- contrasting colors for joints and perimeter frame

#### **MATERIAL OPTIONS**

- 4-mm and 6-mm material thickness
- PE core or FR core

#### **FINISH OPTIONS**

- Kynar 500®/Hylar 5000® high performance fluorocarbon resinous coatings
- anodized
- natural metals

#### **LIMITATIONS**

- Panels cannot be radiused