



1-800-426-7737

WWW.UNACLAD.COM

ES1, ES2, ES3 & ES4

Mechanical Equipment Screening

DESCRIPTION

Pre-fabricated components mechanically assembled in the field from standard UNA-CLAD components. Providing decorative screening hiding mechanical equipment and improving the structures aesthetic appearance.

FEATURES

- very lightweight
- excellent structural performance
- flexible design parameters
- excellent interface with surrounding construction

MATERIAL OPTIONS

- coil-coated steel (20-year warranty) extra smooth galvanized
- coil-coated aluminum (20-year warranty)
- coil-anodized aluminum (20-year warranty)
- post-painted aluminum (short run, custom colors)
- post-anodized aluminum (short run, custom colors)
- stainless steel
- copper

FINISH OPTIONS

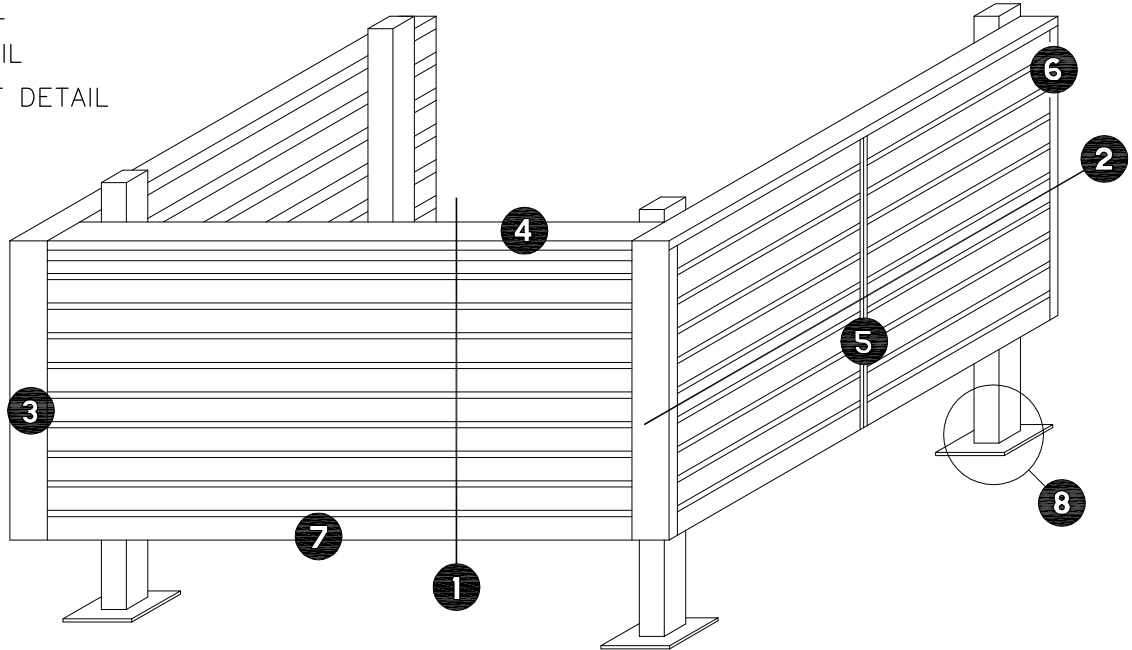
- Kynar 500®/Hylar 5000® coil-coated 2--coat paint systems
- Kynar 500®/Hylar 5000® spray-coated 2-coat paint systems
- coil anodized
- batch anodized
- special coatings

LIMITATIONS

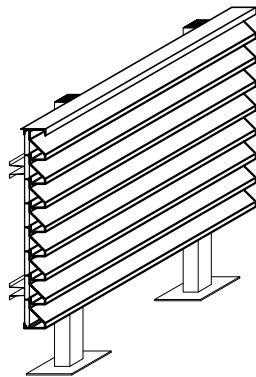
- consult factory for limitations on height, structural requirements and finishes
- oil canning is not a cause for rejection

SERIES ES2 EQUIPMENT SCREEN ISOMETRIC ELEVATION ES2-00

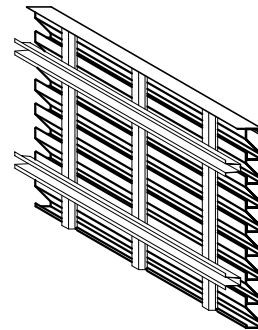
- 1 VERTICAL CUT SECTION
- 2 HORIZONTAL CUT SECTION
- 3 CORNER DETAIL
- 4 TOP DETAIL
- 5 INTERMEDIATE DETAIL
- 6 END DETAIL
- 7 BASE DETAIL
- 8 ROOF POST DETAIL



FRONT ISO ELEVATION



FRONT ISO ELEVATION

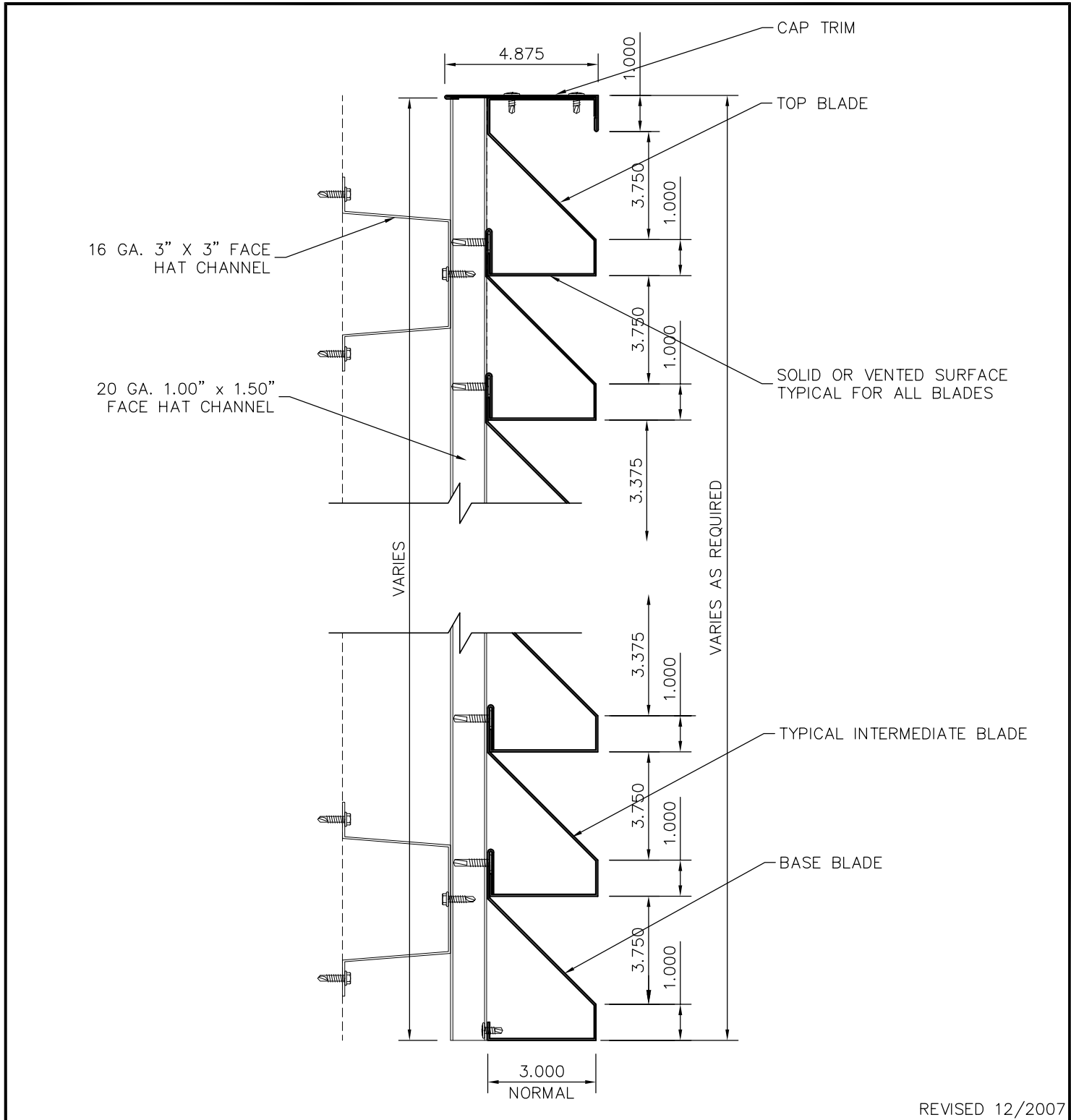


REAR ISO ELEVATION

REVISED 7/2007

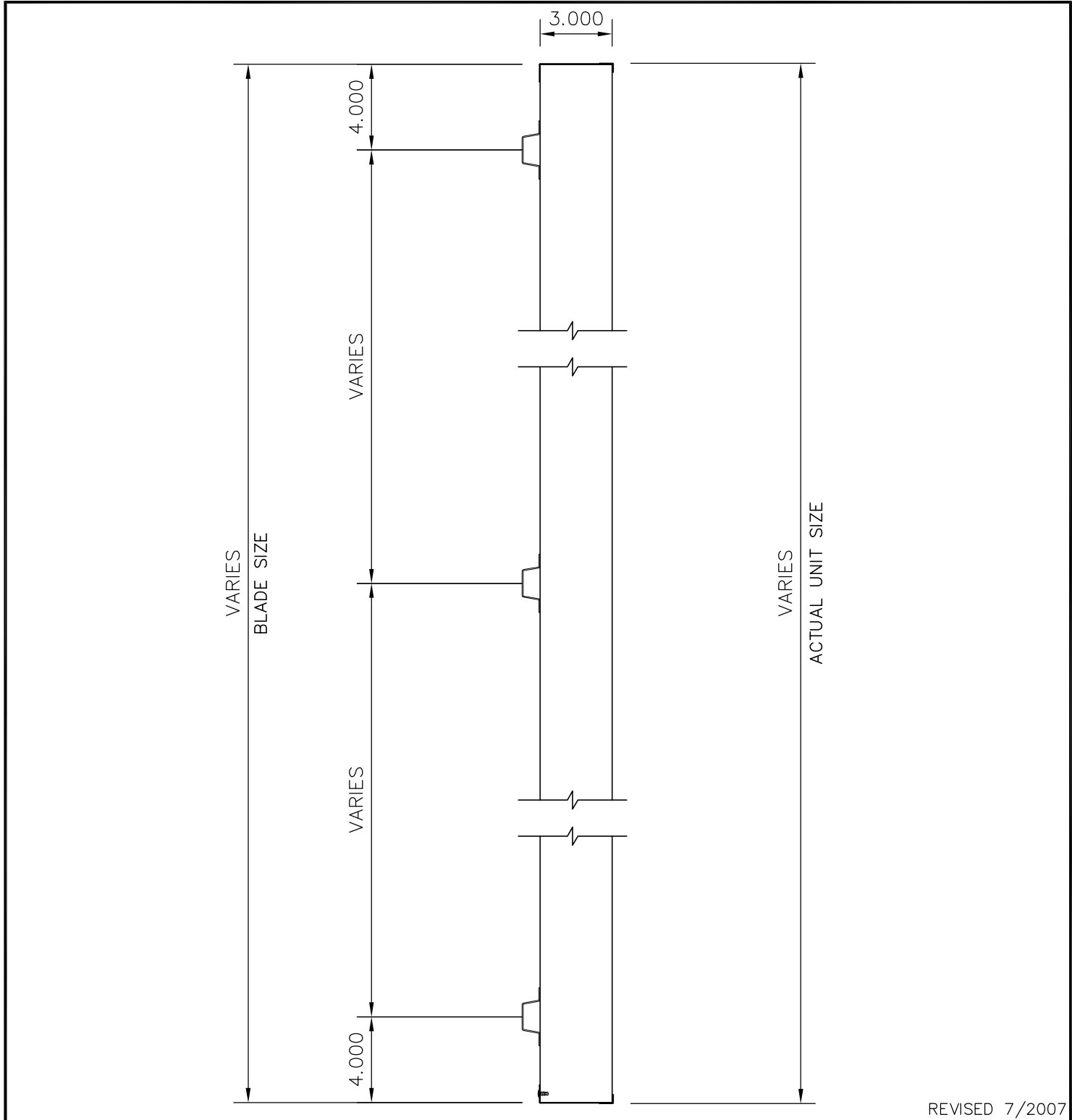
ES2 - VERTICAL CUT SECTION

ES2-01



ES2 - HORIZONTAL CUT SECTION

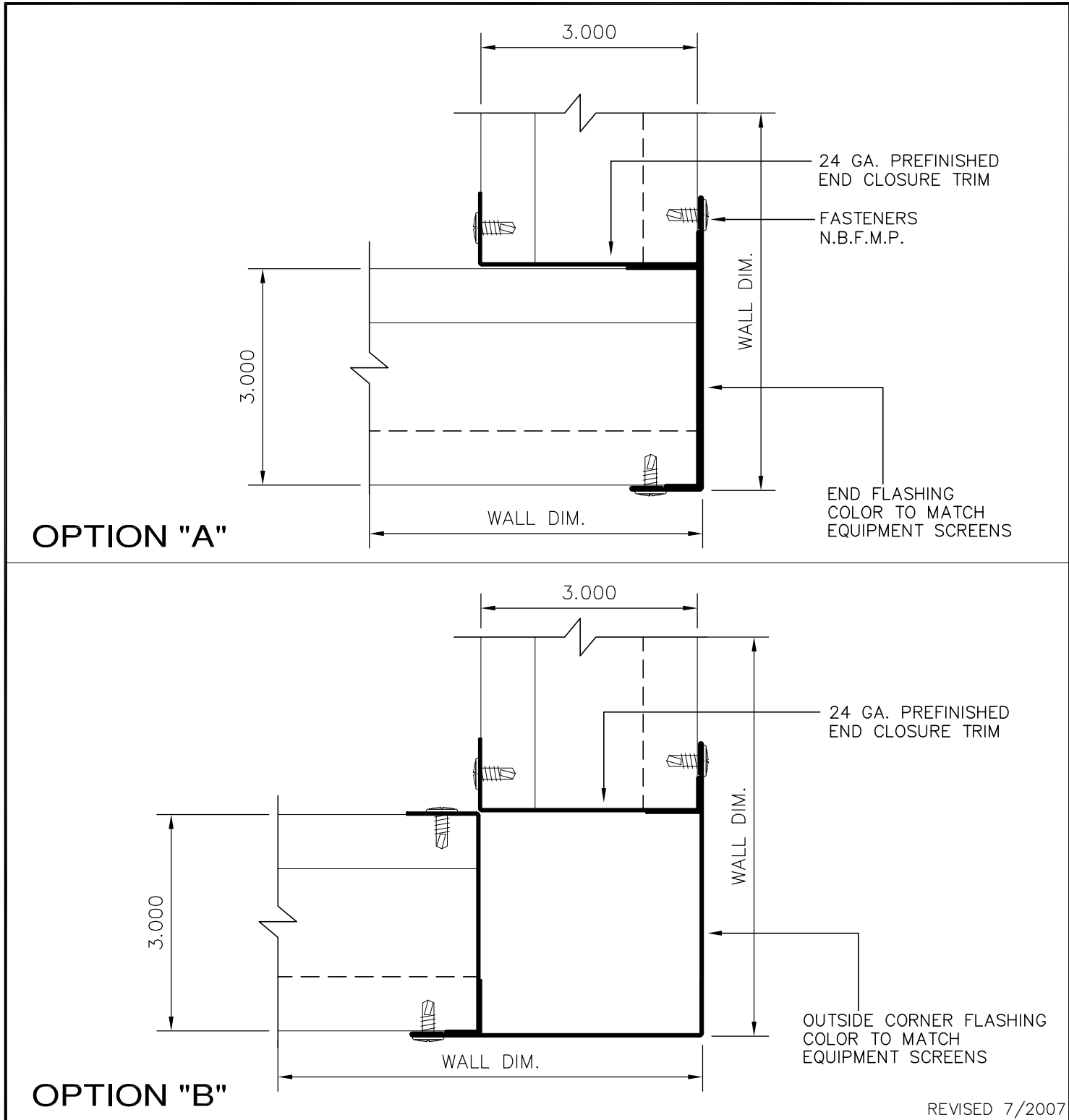
ES2-02



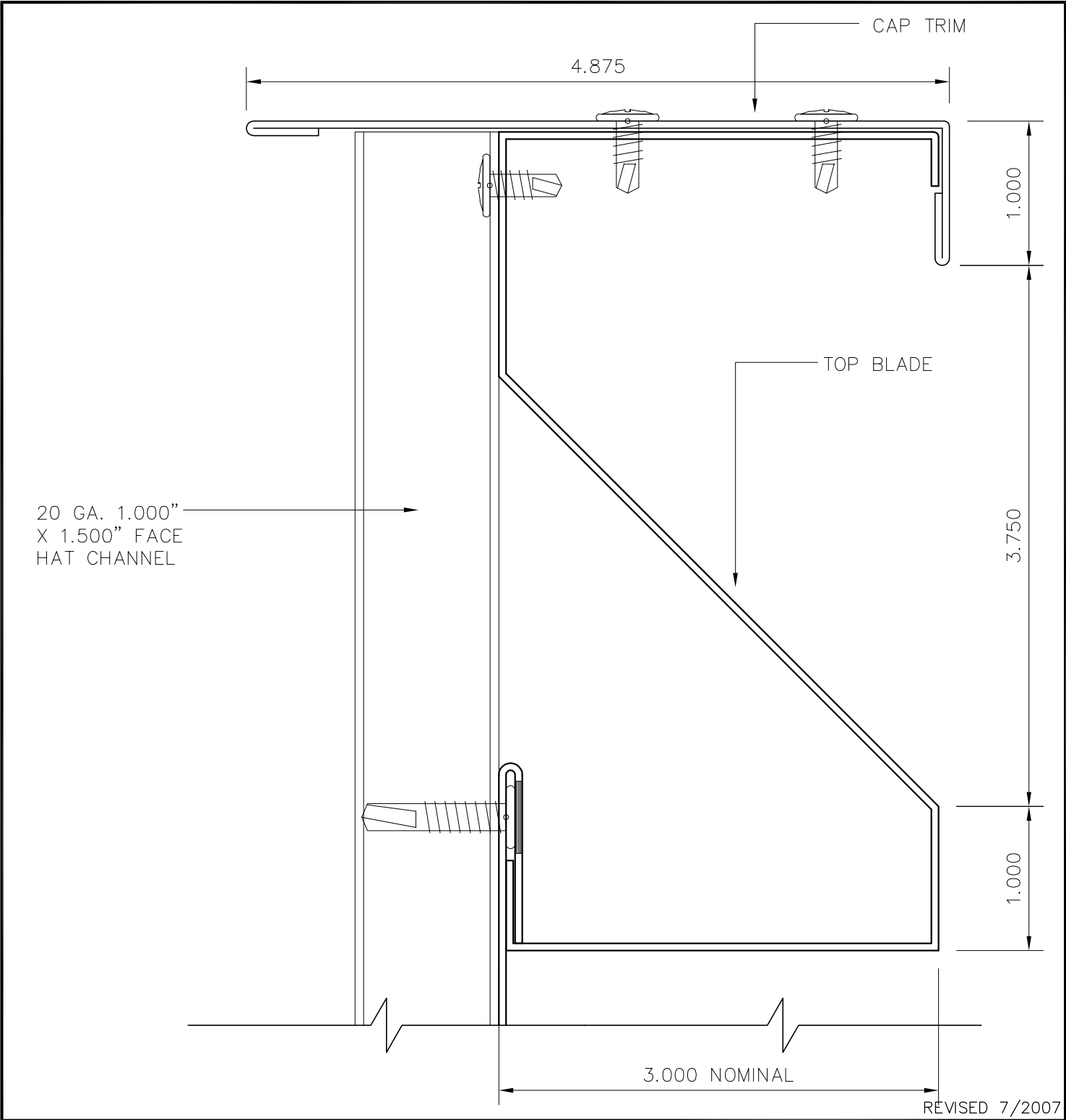
REVISED 7/2007

ES2 - CORNER SECTION

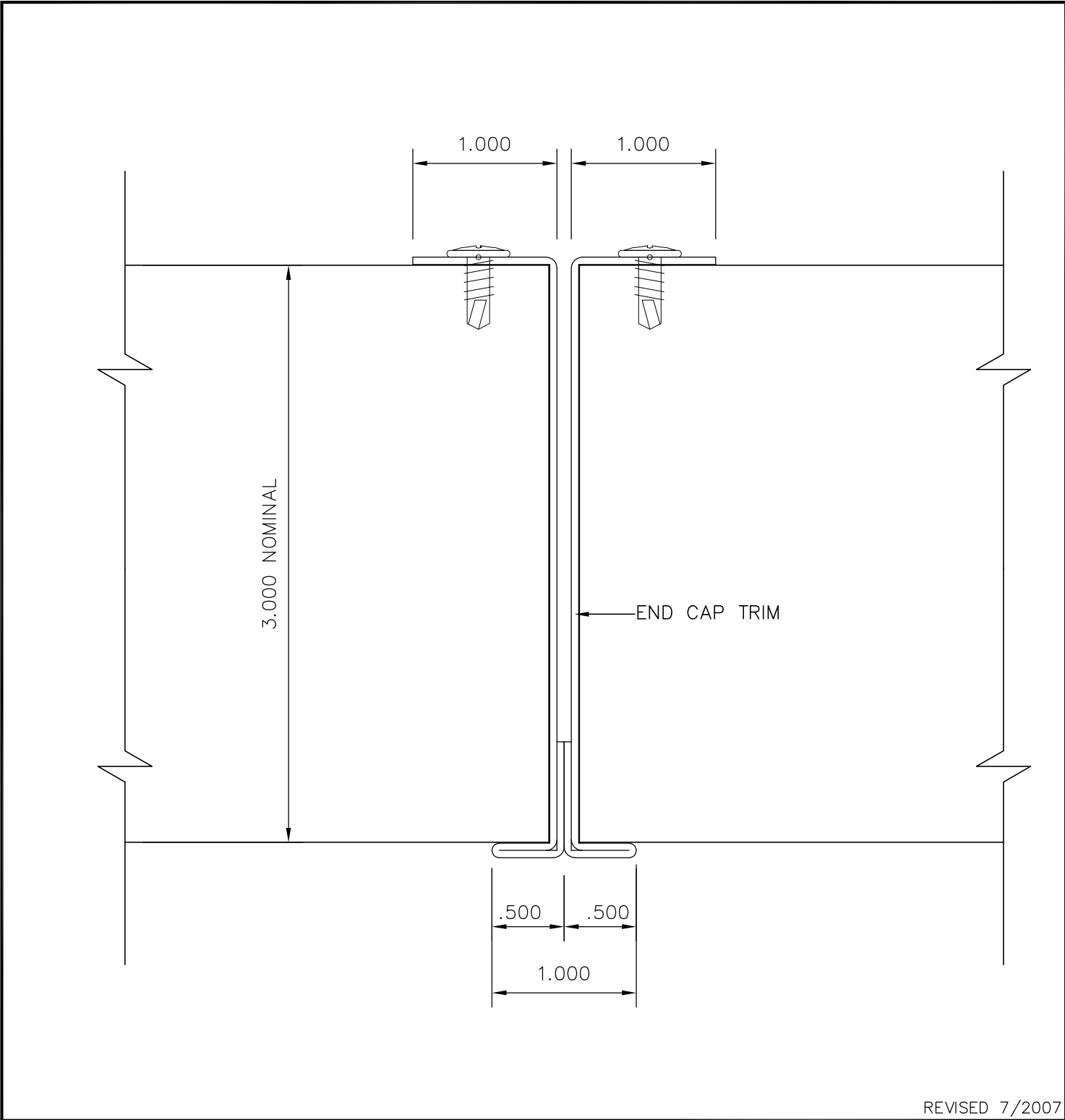
ES2-03



ES2 - TOP DETAIL **ES2-04**

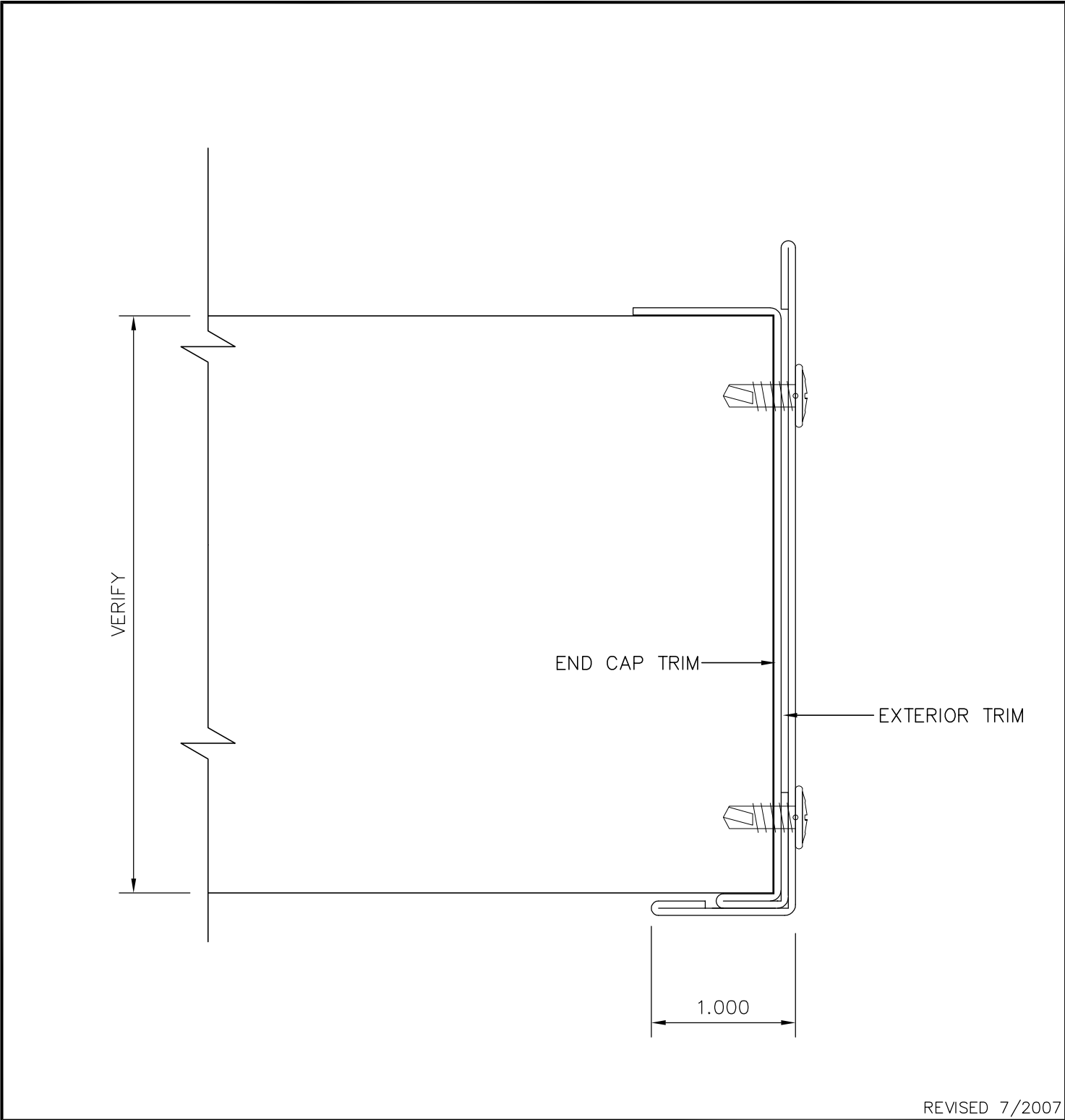


ES2 - INTERMEDIATE DETAIL **ES2-05**



REVISED 7/2007

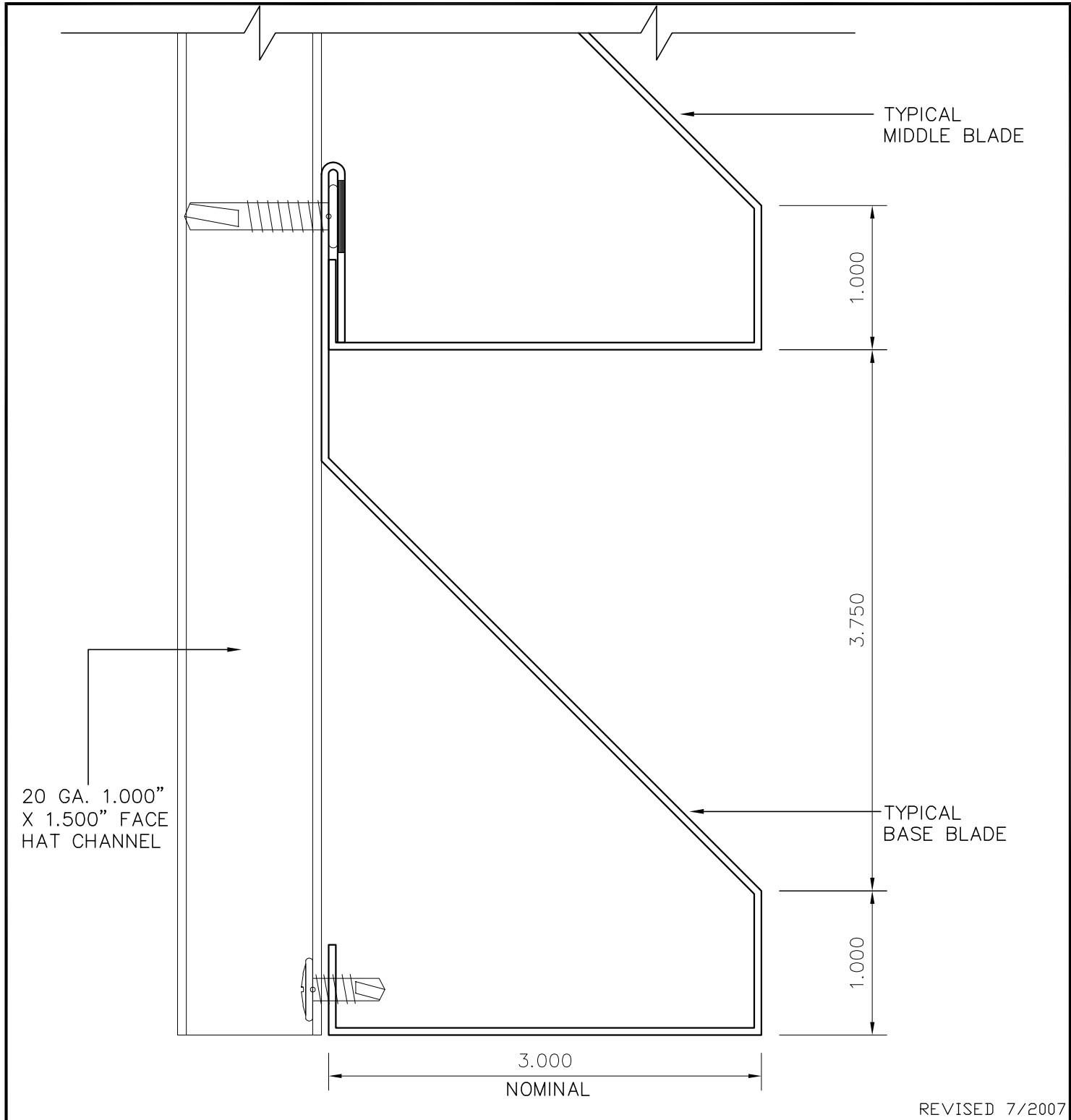
ES2 - END DETAIL **ES2-06**



REVISED 7/2007

ES2 - BASE DETAIL

ES2-07

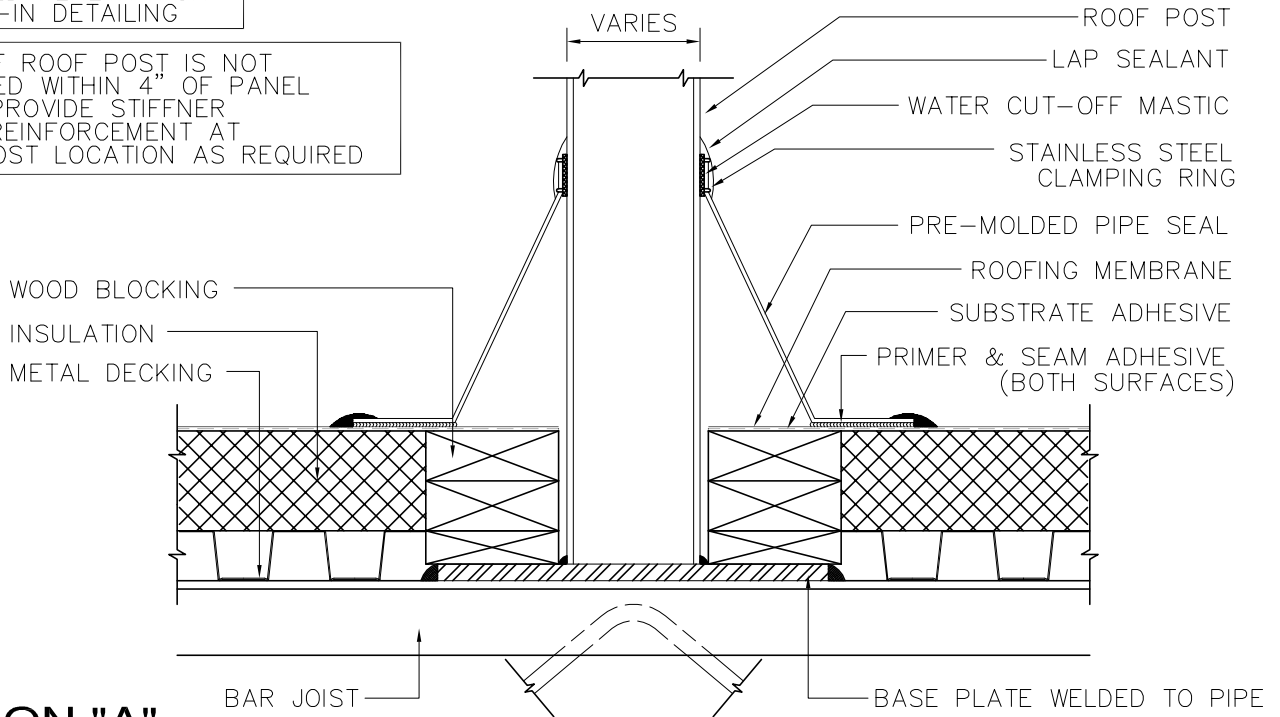


ES2 - ROOF POST DETAIL

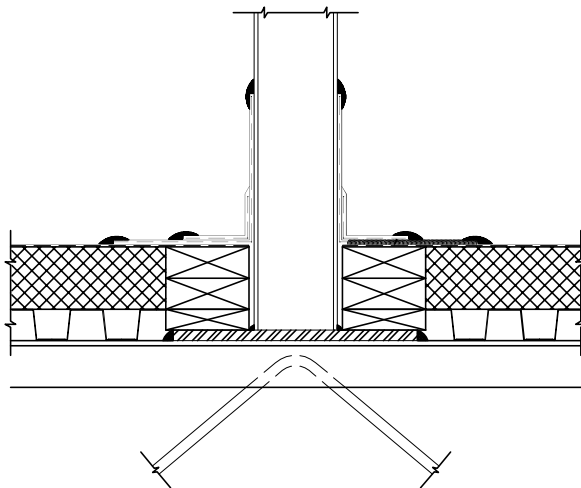
ES2-08

NOTE: CONSULT ROOF MANUFACTURER FOR APPROVED PENETRATION AND TIE-IN DETAILING

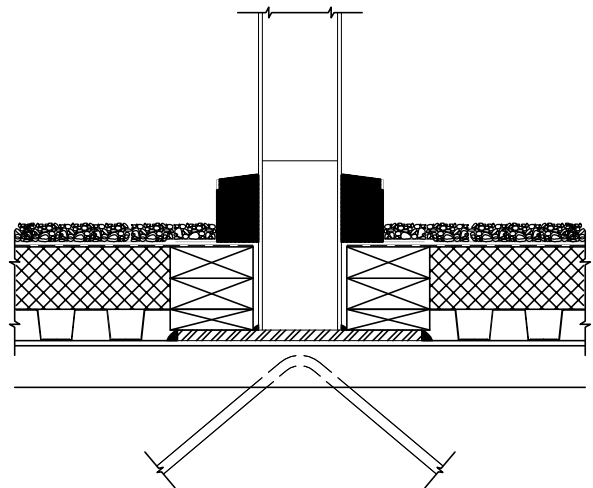
NOTE: IF ROOF POST IS NOT INSTALLED WITHIN 4" OF PANEL POINT, PROVIDE STIFFNER ANGLE REINFORCEMENT AT EACH POST LOCATION AS REQUIRED



OPTION "A"



OPTION "B"



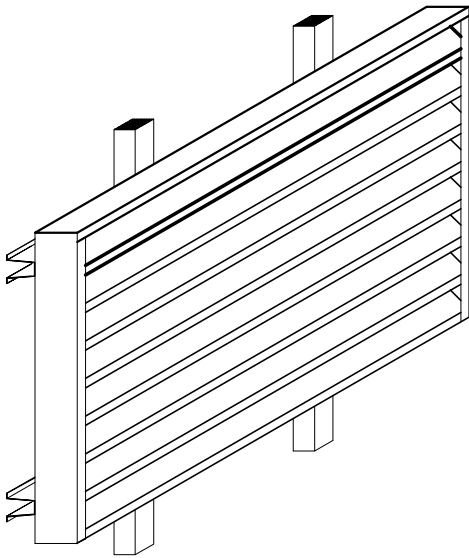
OPTION "C"

REVISED 7/2007

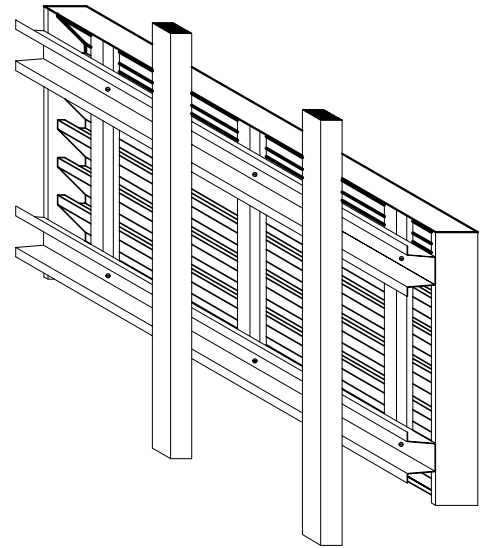
** IMPORTANT NOTE **

PANEL INSPECTION & STORAGE

- A. CHECK THE SHIPMENT AGAINST THE SHIPPING LIST.
- B. DAMAGED MATERIAL MUST BE NOTED ON BILL OF LOADING WITHIN (5) BUSINESS DAYS AND RETURNED TO SALES REPRESENTATIVE @ FIRESTONE METAL PRODUCTS.
- C. EQUIPMENT SCREEN CRATES SHOULD BE HANDLED CAREFULLY.
- D. CHECK TO SEE THAT MOISTURE HAS NOT FORMED INSIDE THE BUNDLES DURING SHIPMENT. IF MOISTURE IS PRESENT, EQUIPMENT SCREENS SHOULD BE UNCRATED AND WIPED DRY, THEN RESTACKED AND LOOSELY COVERED SO THAT AIR CAN CIRCULATE BETWEEN THE EQUIPMENT SCREENS.
- D. CRATES NEED TO BE KEPT DRY.



FRONT VIEW



REAR VIEW

REVISED 7/2007