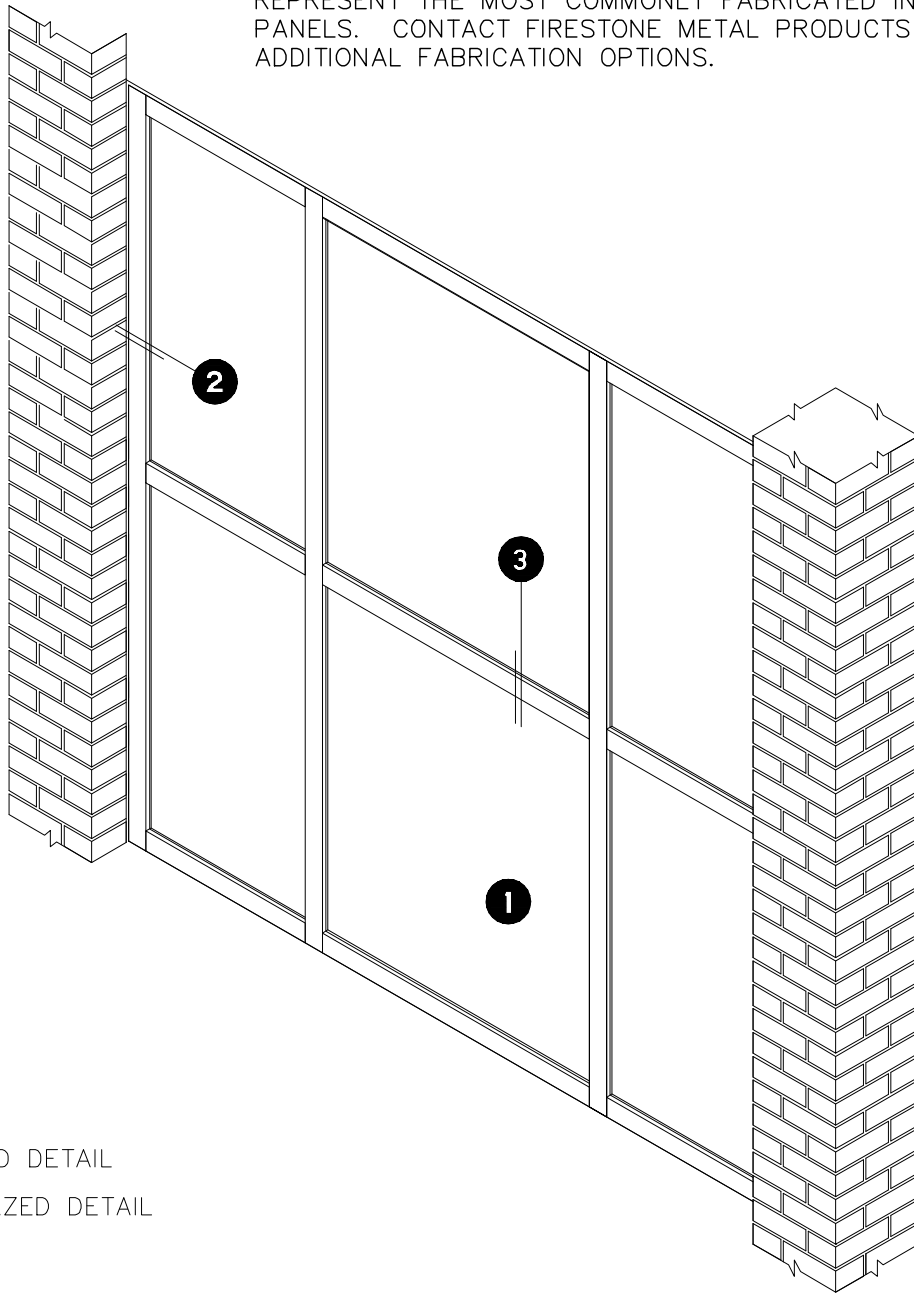


SERIES 5000 - GLAZED INSULATED PANEL INDEX

S5000-00

FIRESTONE METAL PRODUCTS IS A FABRICATOR OF CUSTOM LAMINATED INSULATED PANELS. THE ENCLOSED DETAILS REPRESENT THE MOST COMMONLY FABRICATED INSULATED PANELS. CONTACT FIRESTONE METAL PRODUCTS FOR ADDITIONAL FABRICATION OPTIONS.

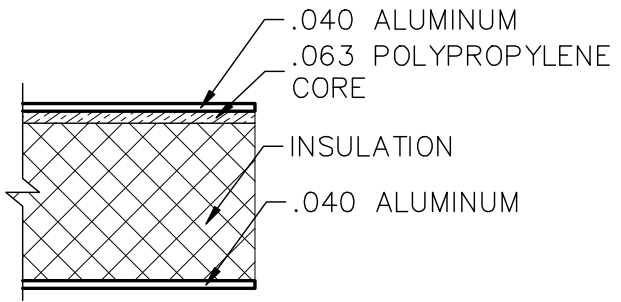
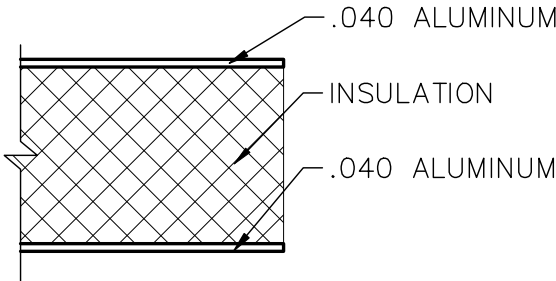


- 1** CORE OPTIONS
- 2** PERIMETER GLAZED DETAIL
- 3** INTERMEDIATE GLAZED DETAIL

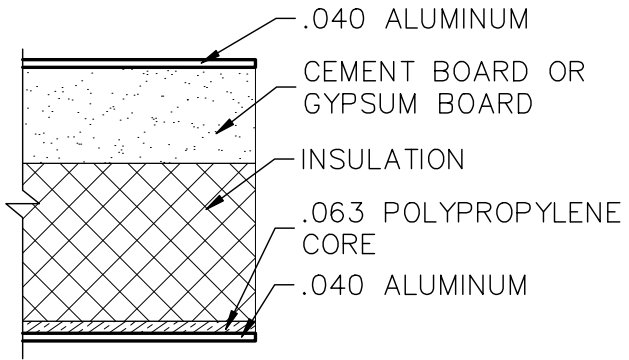
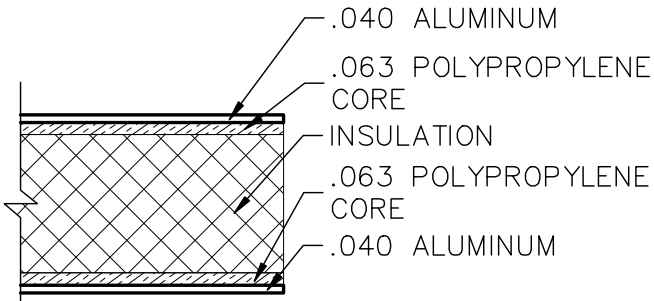
REVISED 10/2009

SERIES 5000 - INSULATED PANEL CORE OPTIONS S5000-01

1/4" AND 1" STANDARD
 VARIOUS THICKNESS
 CONFIGURATIONS AVAILABLE



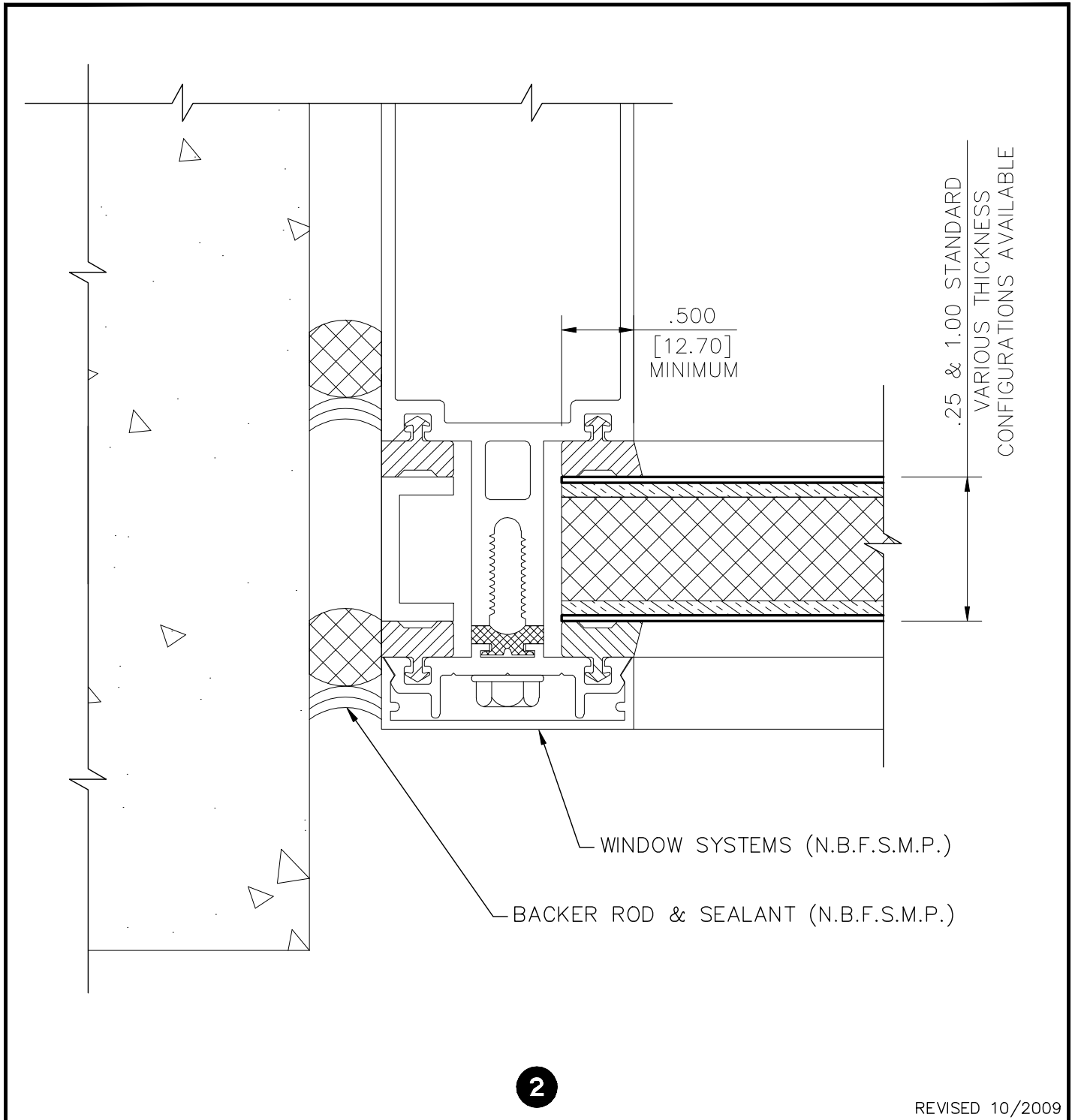
THESE ARE EXAMPLES OF COMMON CORE
 & SUBSTRATE COMBINATIONS.
 THERE IS AN ENDLESS POSSIBILITIES OF
 CUSTOM COMBINATIONS AVAILABLE.



REVISED 10/2009

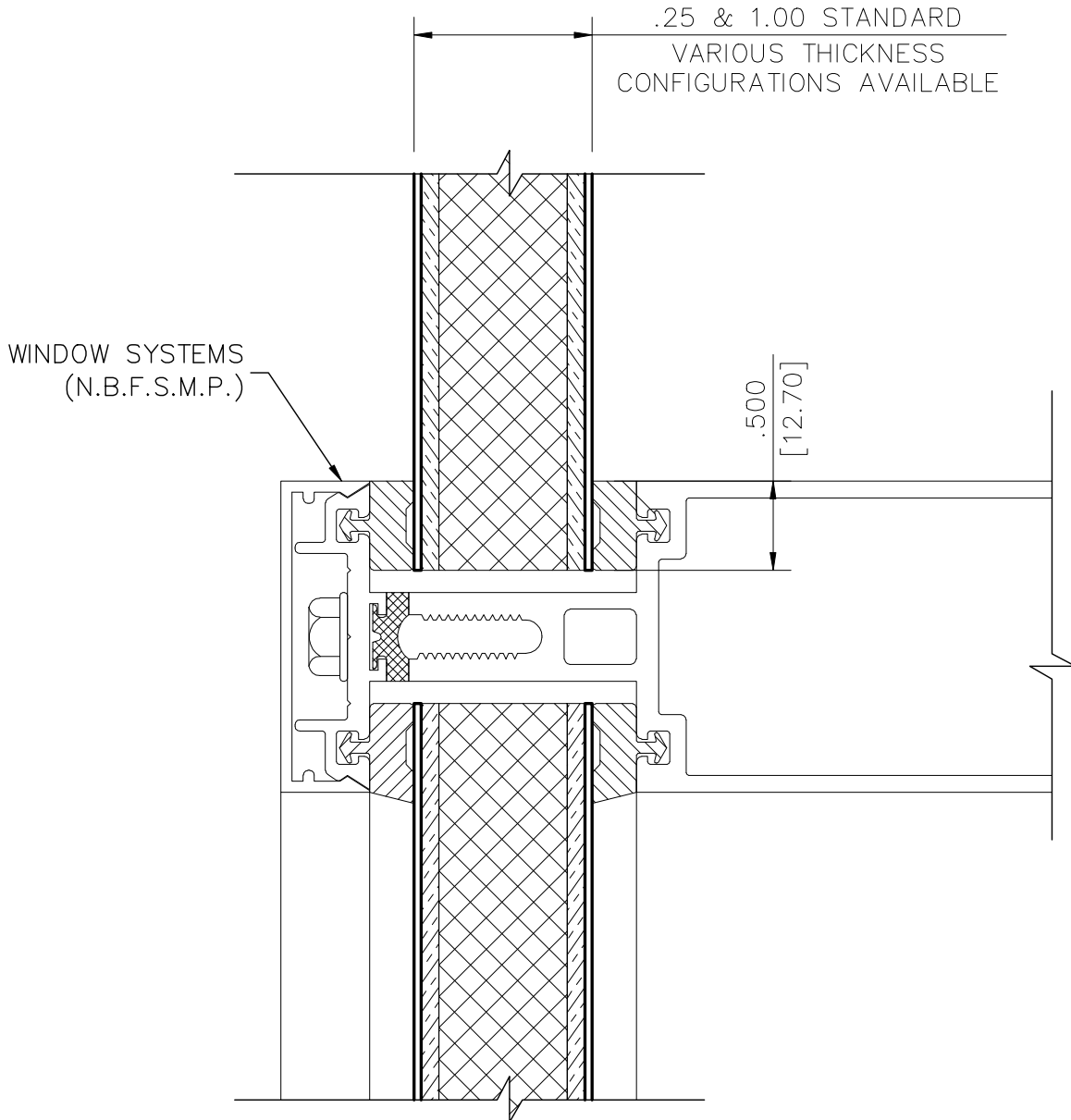
SERIES 5000 - PERIMETER GLAZED DETAIL

S5000-02



SERIES 5000 - INTERMEDIATE GLAZED DETAIL

S5000-03



3

REVISED 10/2009



1-800-426-7737

WWW.UNACLAD.COM

Series 5000 UNA-CLAD Panel

DESCRIPTION

Aluminum or steel skins laminated to foam core material. System is glazed into window or window wall framing.

FEATURES

- very lightweight
- non-sequential installation
- superb deflection resistance when used with stabilizer
- increased building R-value
- multiple core options
- embossed or non-embossed skins
- finished on one or both sides

MATERIAL OPTIONS

- coil-coated aluminum skins (.013, .015, .032, .040, .050 or .063)
- steel skins (24ga. or 26ga.)
- embossed skin
- smooth skin
- panel thickness from 1/4 to 3 inches

FINISH OPTIONS

- Kynar 500®/Hylar 5000® high performance fluorocarbon resinous coatings
- coil anodized
- batch anodized
- stainless steel with #4 brushed-satin and #8 mirror-polished finish
- baked enamel
- special coatings

LIMITATIONS

- Maximum narrow dimension is 60 inches – consult manufacture for color availability in 60" product