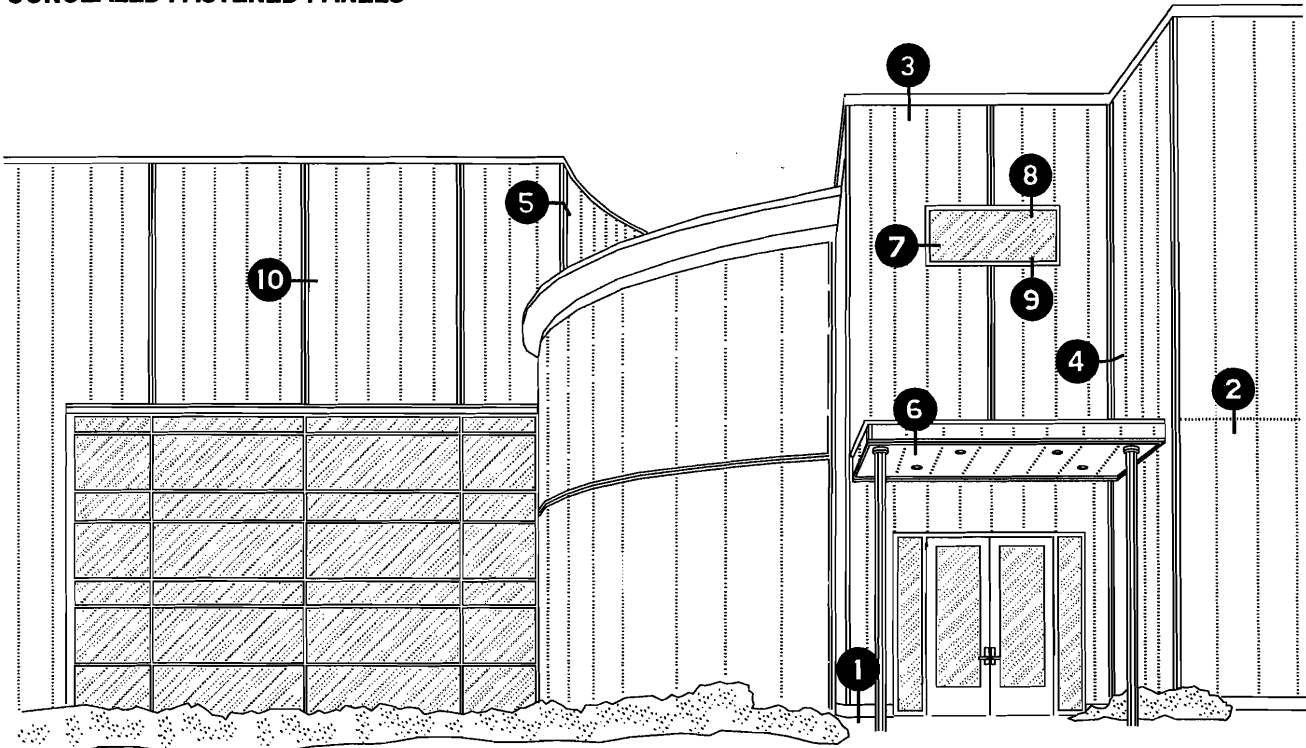


CONCEALED FASTENED PANELS



- 1** BASE DETAILS
- 2** HORIZONTAL JOINT DETAIL
- 3** PARAPET ROOF DETAIL
- 4** INSIDE CORNER DETAIL
- 5** OUTSIDE CORNER DETAIL
- 6** SOFFIT DETAIL
- 7** WINDOW JAMB DETAIL
- 8** WINDOW HEAD DETAIL
- 9** WINDOW SILL DETAIL
- 10** TRANSITION OPTIONS

VERTICAL PANELS

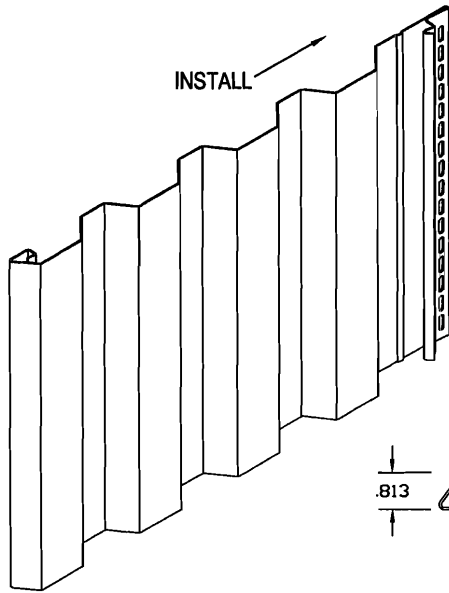
REFERENCE SHEETS

- VO.1 - PANEL PROFILE INFORMATION
- VA.1 - WINDOW OPENING ISOMETRIC
- VA.2 - PENETRATION ISOMETRIC
- VB.1 - PANEL / PANEL OVERLAP SPLICE

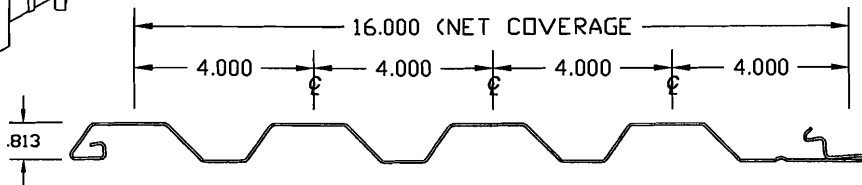
EACH DETAIL CONSISTS OF TWO DIFFERENT WALL CAVITY ASSEMBLIES; INSULATED AND NON-INSULATED.

IE: DETAIL ① ON THE ELEVATION WILL BE REPRESENTED BY TWO SHEETS 1.1 AND 1.2 ILLUSTRATING EACH RESPECTIVE WALL ASSEMBLY.

WALL TYPE 1 & 2 WALL ASSEMBLY DISSEMINATES GENERAL, BEST PRACTICE, RECOMMENDATION FOR USE OF AIR / VAPOR BARRIERS WITHIN U.S. DEPT. OF ENERGY CLIMATE ZONES



ITEM NUMBER: CFP-16F
NET COVERAGE: 16" (1' 4")
MAXIMUM LENGTH: (40 feet)



MATERIAL OPTIONS

COIL - COATED STEEL
COIL - COATED ALUMINUM
ANODIZED ALUMINUM

FABRICATION OPTIONS

STEEL: 18, 20, 22, 24 GAUGE
ALUMINUM: .032" - .040"

FINISH OPTIONS

PAINTING "COIL COATED"
HYLAR 5000 / KYNAR 500, MODIFIED POLYESTERS,
AND OTHER CUSTOM OR EXOTIC FINISHES.

ANODIZING

CLEAR, BRONZES, AND VARIOUS OTHER COLORS
COIL ANODIZED FOR COLOR CONSISTENCY.

NOTES:

1. HEAVIER GAUGES MINIMIZE "OIL CANNING".
2. OIL CANNING IS NOT A CAUSE FOR REJECTION.
3. AN EXTENSIVE SELECTION OF ASSOCIATED PANEL FLASHING AND TRIMS ARE AVAILABLE.
4. CONTACT FSMP FOR UP TO DATE TECHNICAL INFORMATION AND MATERIAL LIMITATIONS.
5. ALL SYSTEMS WITH TESTING MUST BE INSTALLED IN ACCORDANCE WITH THE ASSEMBLY AS TESTED.

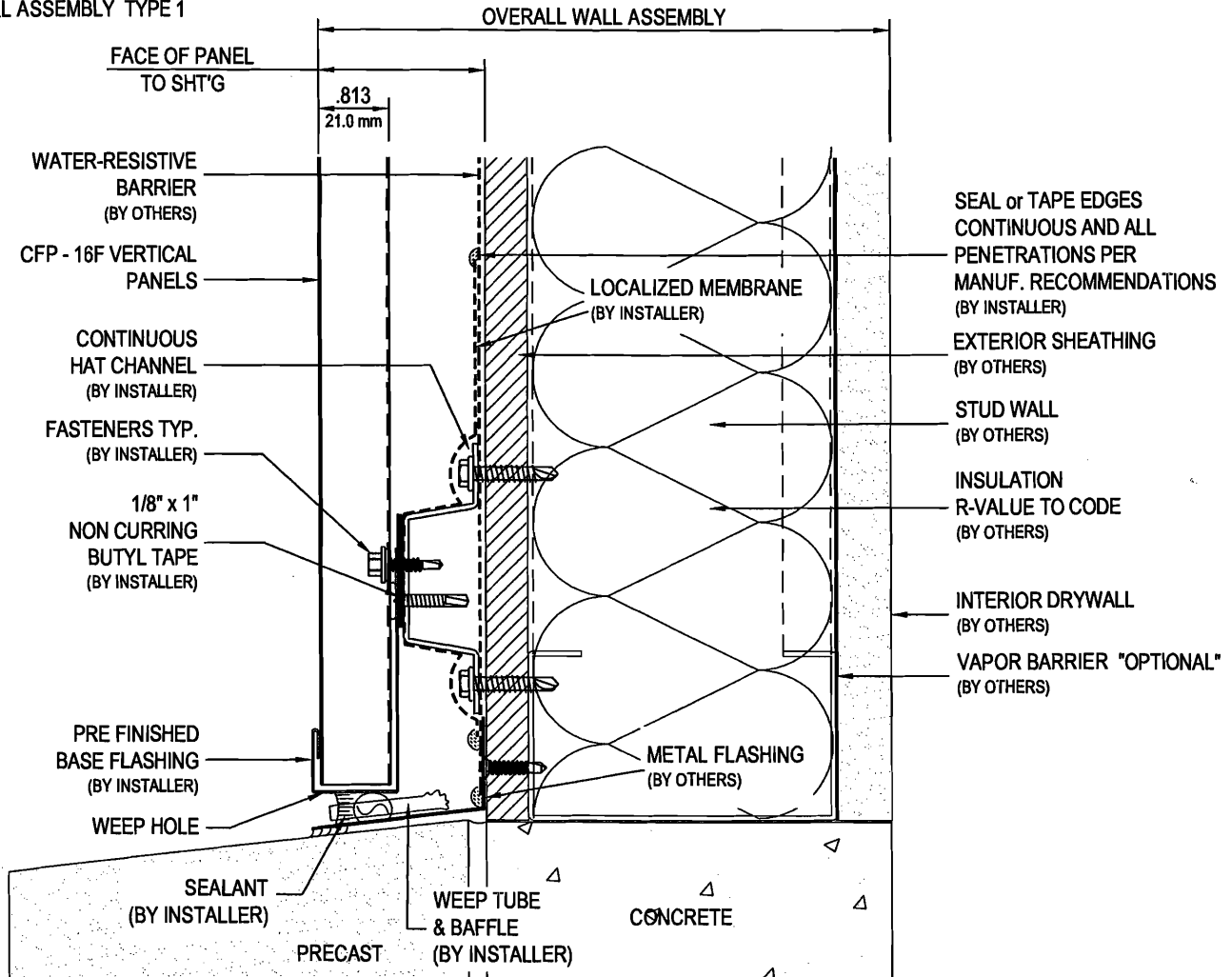


Delta Series

CFP-16F - BASE DETAIL

16F - V1.1

WALL ASSEMBLY TYPE 1



IMPROVE ENERGY EFFICIENCY WITH PROPER COMPONENT WALL ASSEMBLIES

IN MOST REGIONS, EXTERIOR WALLS HAVING INSULATION INSIDE THE STUD WALL CAVITY SHOULD USE A VAPOR-PERMEABLE MEMBRANE APPLIED ON THE EXTERIOR SIDE OF THE WALL. A VAPOR-PERMEABLE MEMBRANE ALLOWS THE WALL CAVITY TO BREATHE AND DRY POTENTIAL MOISTURE CAUSED FROM VAPOR PRESSURE. IN COLDER CLIMATES A NON-PERMEABLE VAPOR BARRIER MUST BE INSTALLED ON THE INTERIOR SIDE OF THE WALL ASSEMBLY TO MINIMIZE OUTWARD VAPOR PRESSURE CAUSED BY HEATED AND HUMIDIFIED INTERIOR ENVIRONMENTS DURING THE COLD SEASON.

2006 INTERNATIONAL BUILDING CODE - 1403.2 WEATHER PROTECTION: EXTERIOR WALLS SHALL PROVIDE THE BUILDING WITH A WEATHER-RESISTANT EXTERIOR WALL ENVELOPE. THE EXTERIOR WALL ENVELOPE SHALL BE DESIGNED AND CONSTRUCTED TO PREVENT THE ACCUMULATION OF WATER WITHIN THE WALL ASSEMBLY BY PROVIDING A WATER-RESISTIVE BARRIER ON THE SIDE OF THE WALL BEHIND THE EXTERIOR VANEER. PROVIDE MEANS OF DRAINING WATER THAT ENTERS BETWEEN THE EXTERIOR VANEER AND THE WATER-RESISTANT BARRIER.

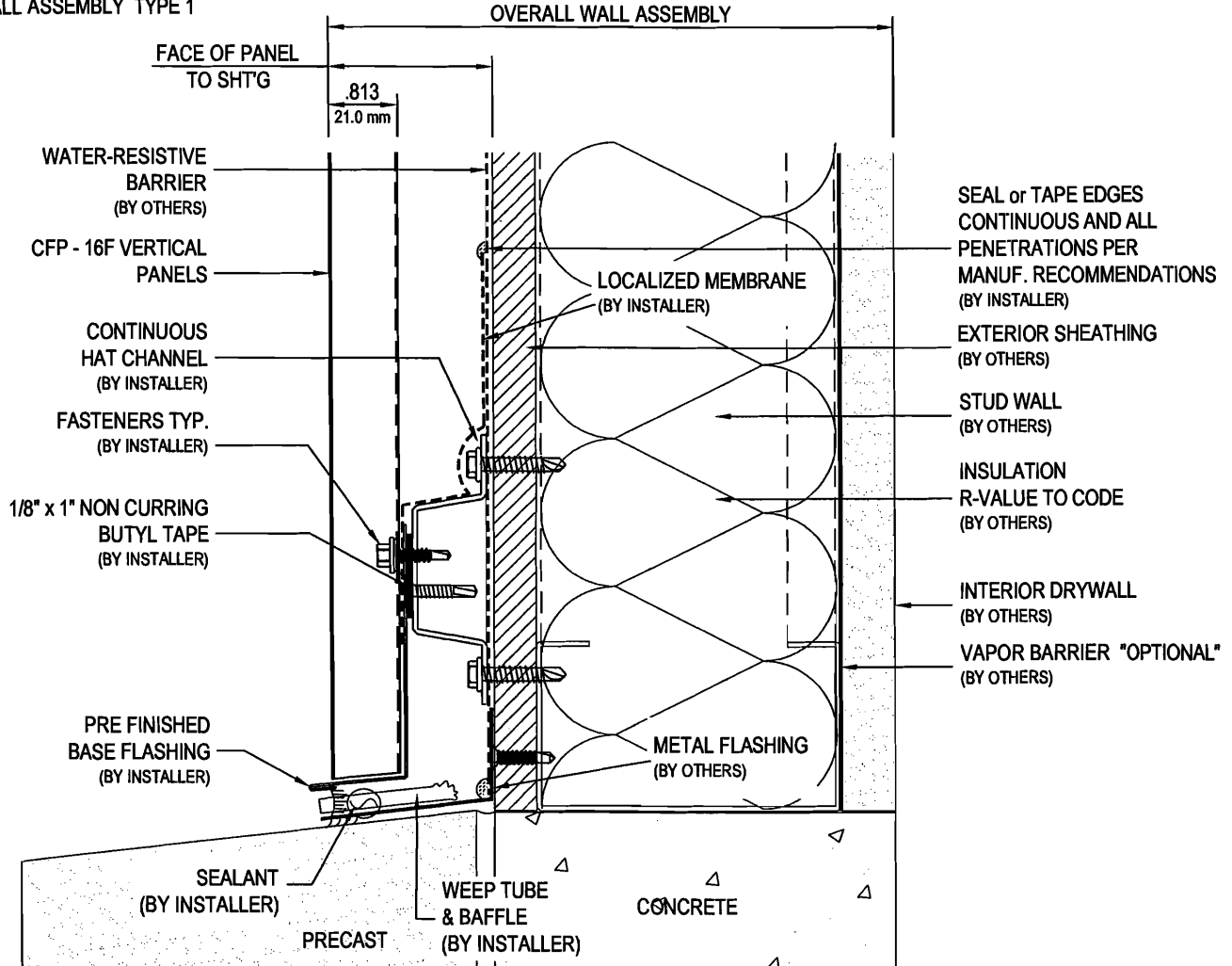


Delta Series

CFP-16F - BASE DETAIL

16F - V1.1A

WALL ASSEMBLY TYPE 1



IMPROVE ENERGY EFFICIENCY WITH PROPER COMPONENT WALL ASSEMBLIES

IN MOST REGIONS, EXTERIOR WALLS HAVING INSULATION INSIDE THE STUD WALL CAVITY SHOULD USE A VAPOR-PERMEABLE MEMBRANE APPLIED ON THE EXTERIOR SIDE OF THE WALL. A VAPOR-PERMEABLE MEMBRANE ALLOWS THE WALL CAVITY TO BREATHE AND DRY POTENTIAL MOISTURE CAUSED FROM VAPOR PRESSURE. IN COLDER CLIMATES A NON-PERMEABLE VAPOR BARRIER MUST BE INSTALLED ON THE INTERIOR SIDE OF THE WALL ASSEMBLY TO MINIMIZE OUTWARD VAPOR PRESSURE CAUSED BY HEATED AND HUMIDIFIED INTERIOR ENVIRONMENTS DURING THE COLD SEASON.

2006 INTERNATIONAL BUILDING CODE - 1403.2 WEATHER PROTECTION: EXTERIOR WALLS SHALL PROVIDE THE BUILDING WITH A WEATHER-RESISTANT EXTERIOR WALL ENVELOPE. THE EXTERIOR WALL ENVELOPE SHALL BE DESIGNED AND CONSTRUCTED TO PREVENT THE ACCUMULATION OF WATER WITHIN THE WALL ASSEMBLY BY PROVIDING A WATER-RESISTIVE BARRIER ON THE SIDE OF THE WALL BEHIND THE EXTERIOR VANEER. PROVIDE MEANS OF DRAINING WATER THAT ENTERS BETWEEN THE EXTERIOR VANEER AND THE WATER-RESISTANT BARRIER.

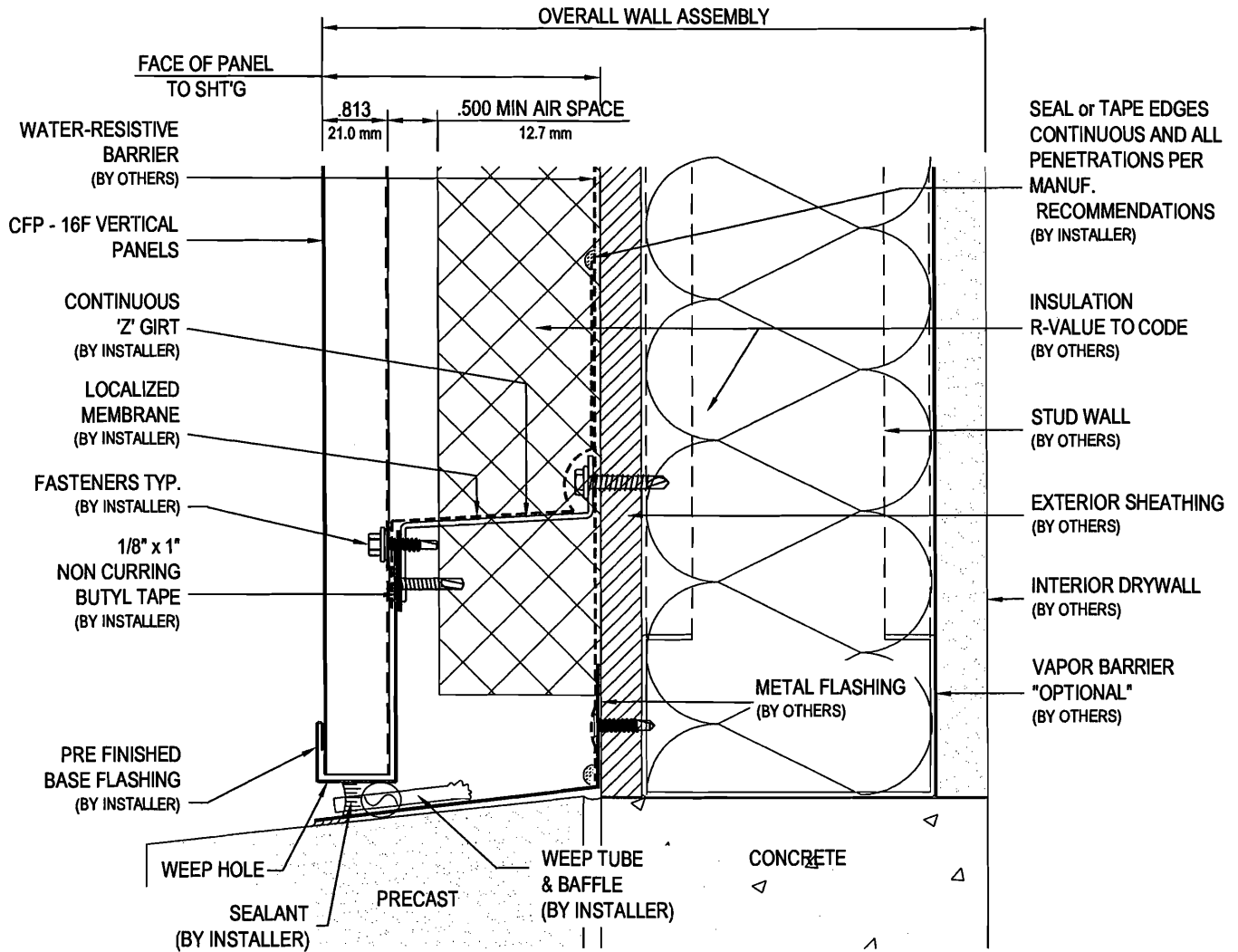
V1.1 OPTION A

Delta Series

CFP-16F - BASE DETAIL

16F - V1.2

WALL ASSEMBLY TYPE 2



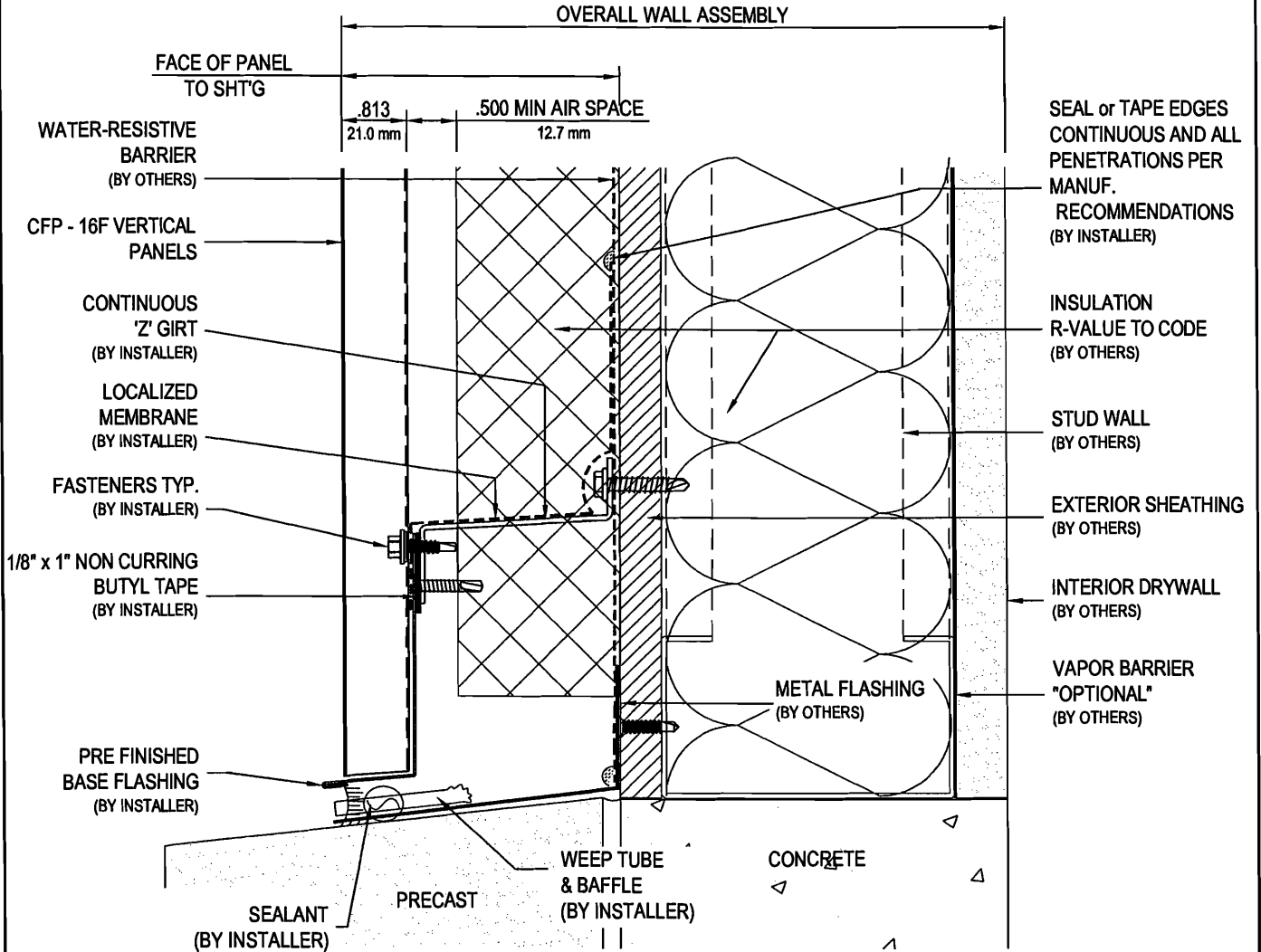
V1.2

Delta Series

CFP-16F - BASE DETAIL

16F - V1.2A

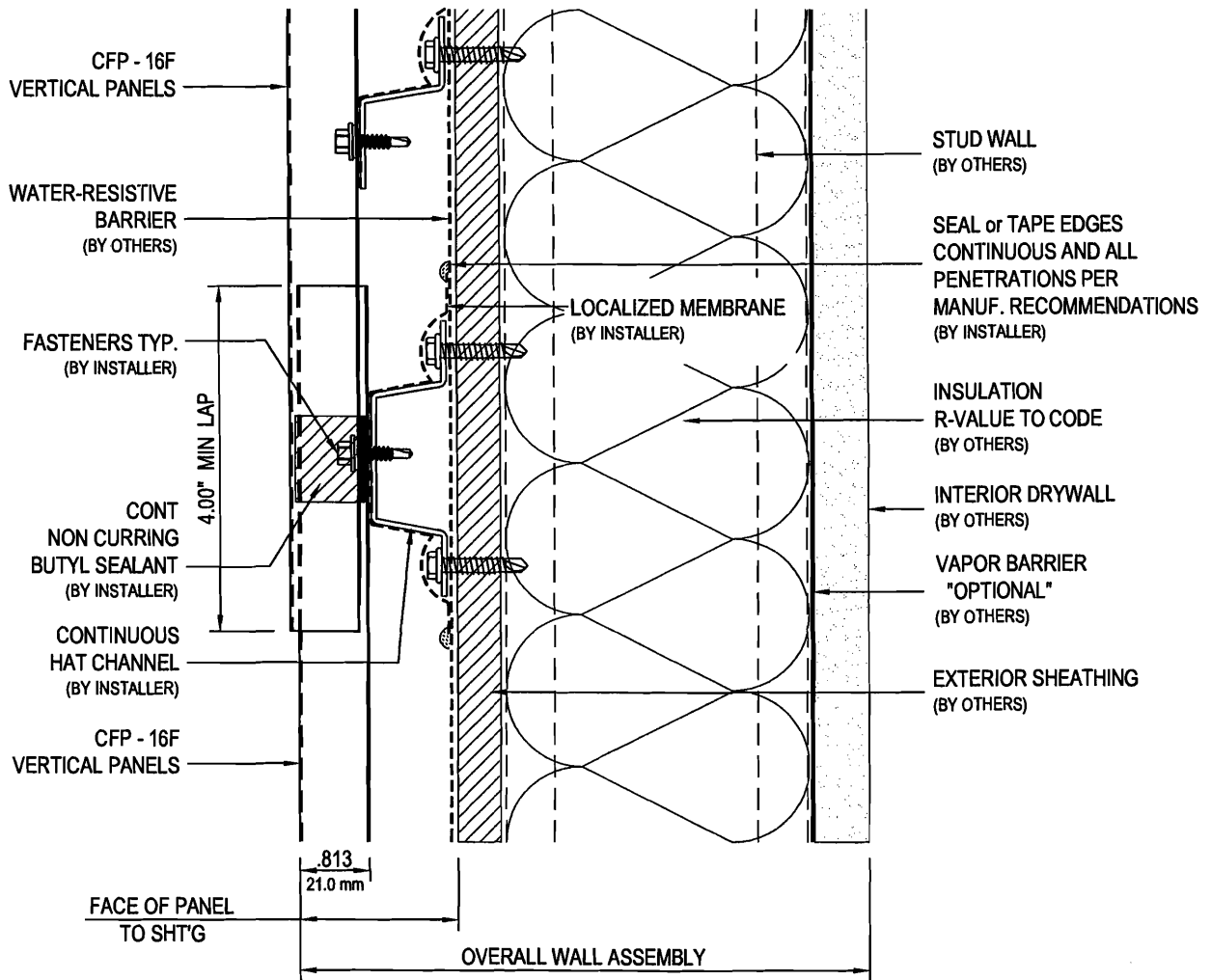
WALL ASSEMBLY TYPE 2



V1.2 OPTION A

Delta Series CFP-16F - HORIZONTAL JOINT DETAIL 16F - V2.1

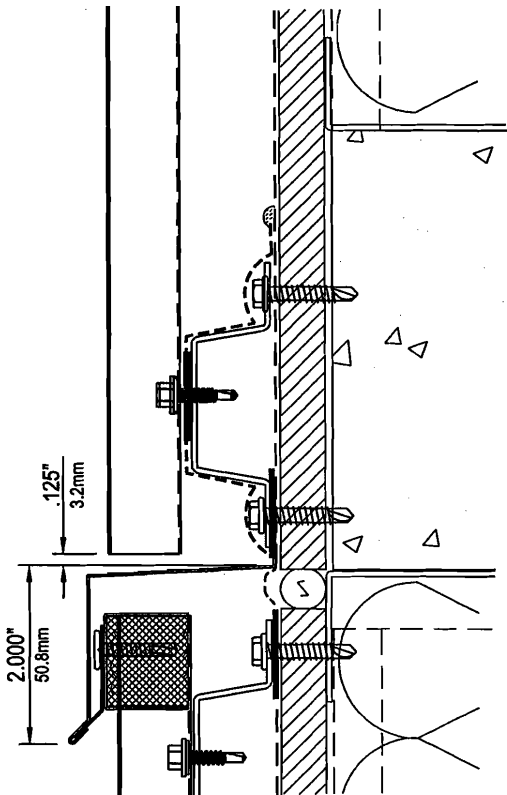
WALL ASSEMBLY TYPE 1



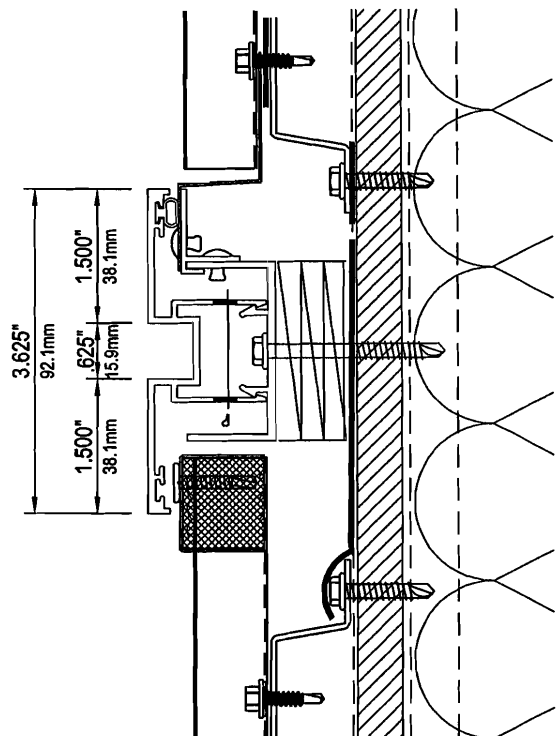
V2.1

Delta Series CFP-16F - TRANSITION OPTIONS 16F - V2.1A

WALL ASSEMBLY TYPE 1



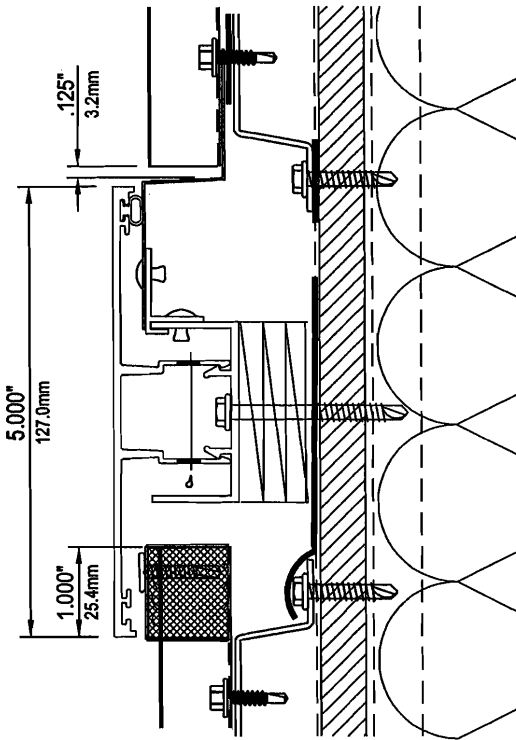
**FORMED TRANSITION STRIP @ MOVEMENT JOINT
CFP - HORIZONTAL PANELS - STANDARD DETAIL**



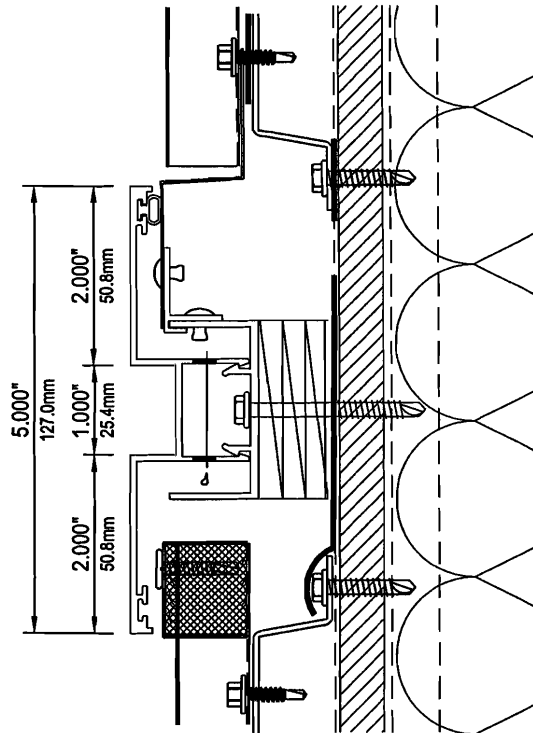
**3-5/8" EXTRUDED TRANSITION STRIP w/ REVEAL
CFP - HORIZONTAL PANELS - OPTION "A"**

V2.1A

WALL ASSEMBLY TYPE 1



**5" EXTRUDED TRANSITION STRIP w/ REVEAL
CFP - HORIZONTAL PANELS - OPTION "B"**

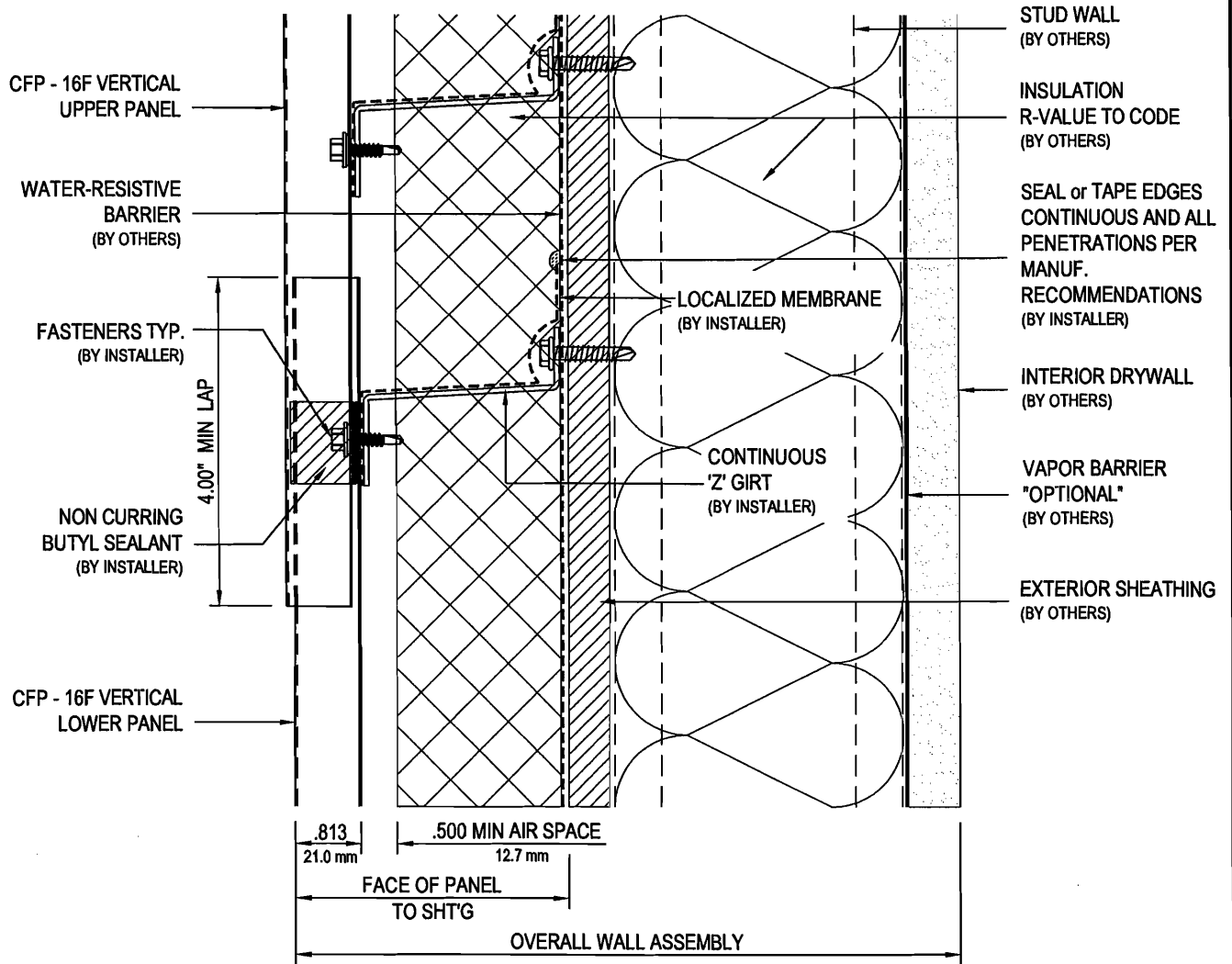


**5" EXTRUDED TRANSITION STRIP w/ FLAT FACE
CFP - HORIZONTAL PANELS - OPTION "C"**

V2.1B

Delta Series CFP-16F - HORIZONTAL JOINT DETAIL 16F - V2.2

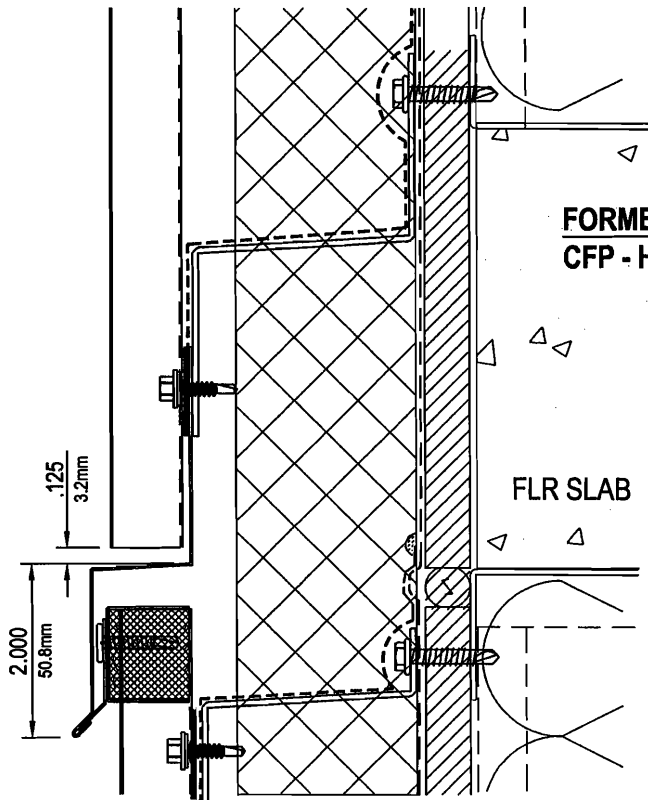
WALL ASSEMBLY TYPE 2



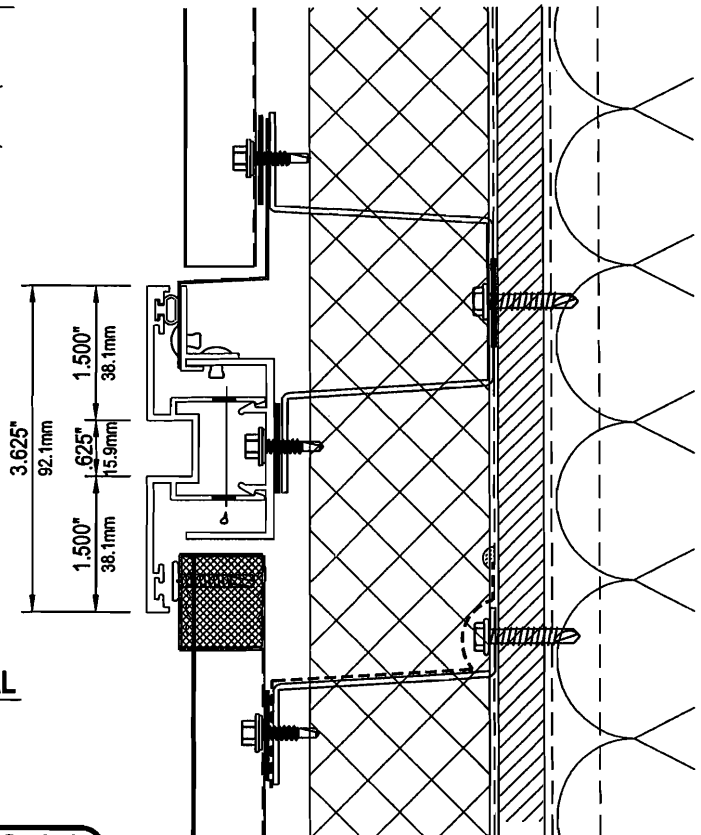
V2.2

Delta Series CFP-16F - TRANSITION OPTIONS 16F - V2.2A

WALL ASSEMBLY TYPE 2



**FORMED TRANSITION STRIP @ MOVEMENT JOINT
CFP - HORIZONTAL PANELS - STANDARD DETAIL**

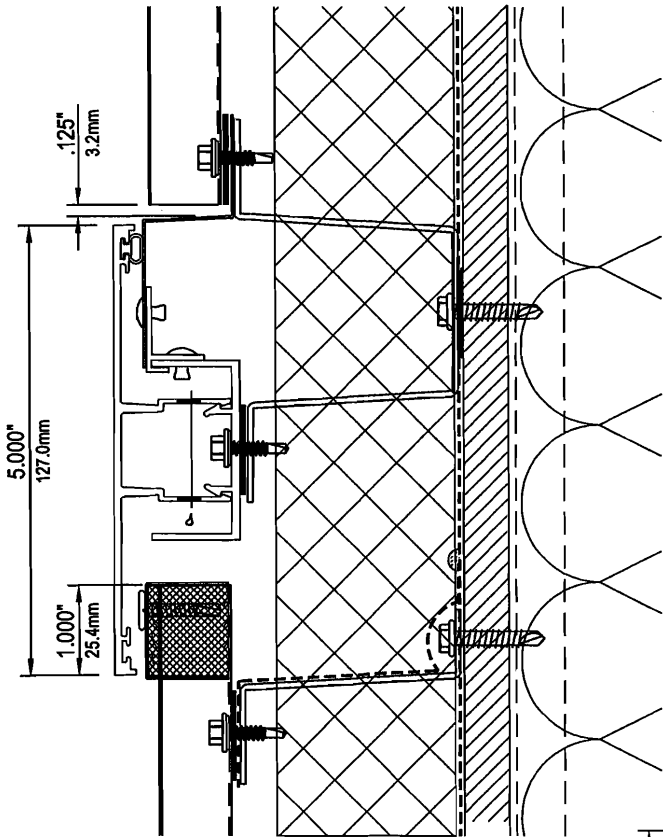


**3-5/8" EXTRUDED TRANSITION STRIP w/ REVEAL
CFP - HORIZONTAL PANELS - OPTION "A"**

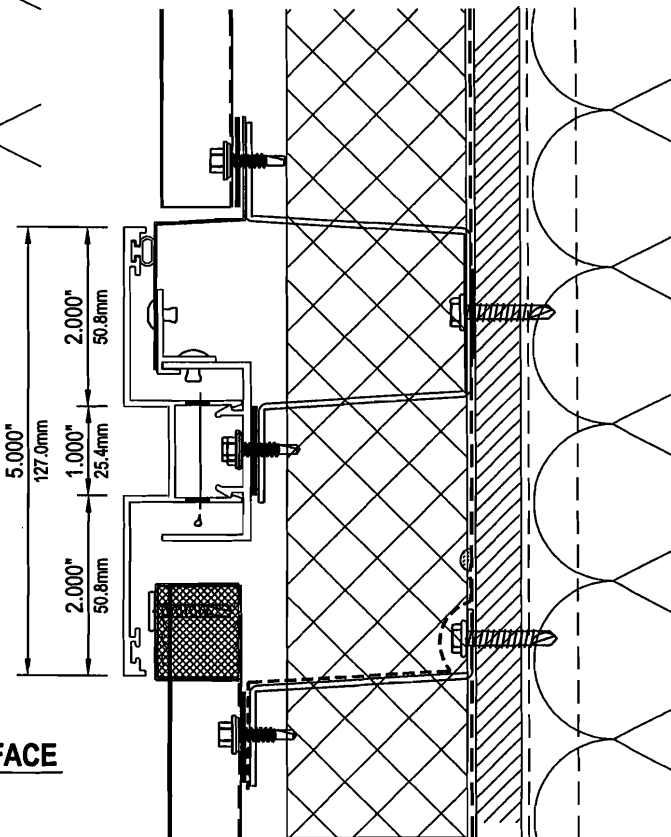
V2.2A

Delta Series CFP-16F - TRANSITION OPTIONS 16F - V2.2B

WALL ASSEMBLY TYPE 2



**5" EXTRUDED TRANSITION STRIP w/ REVEAL
CFP - HORIZONTAL PANELS - OPTION "B"**

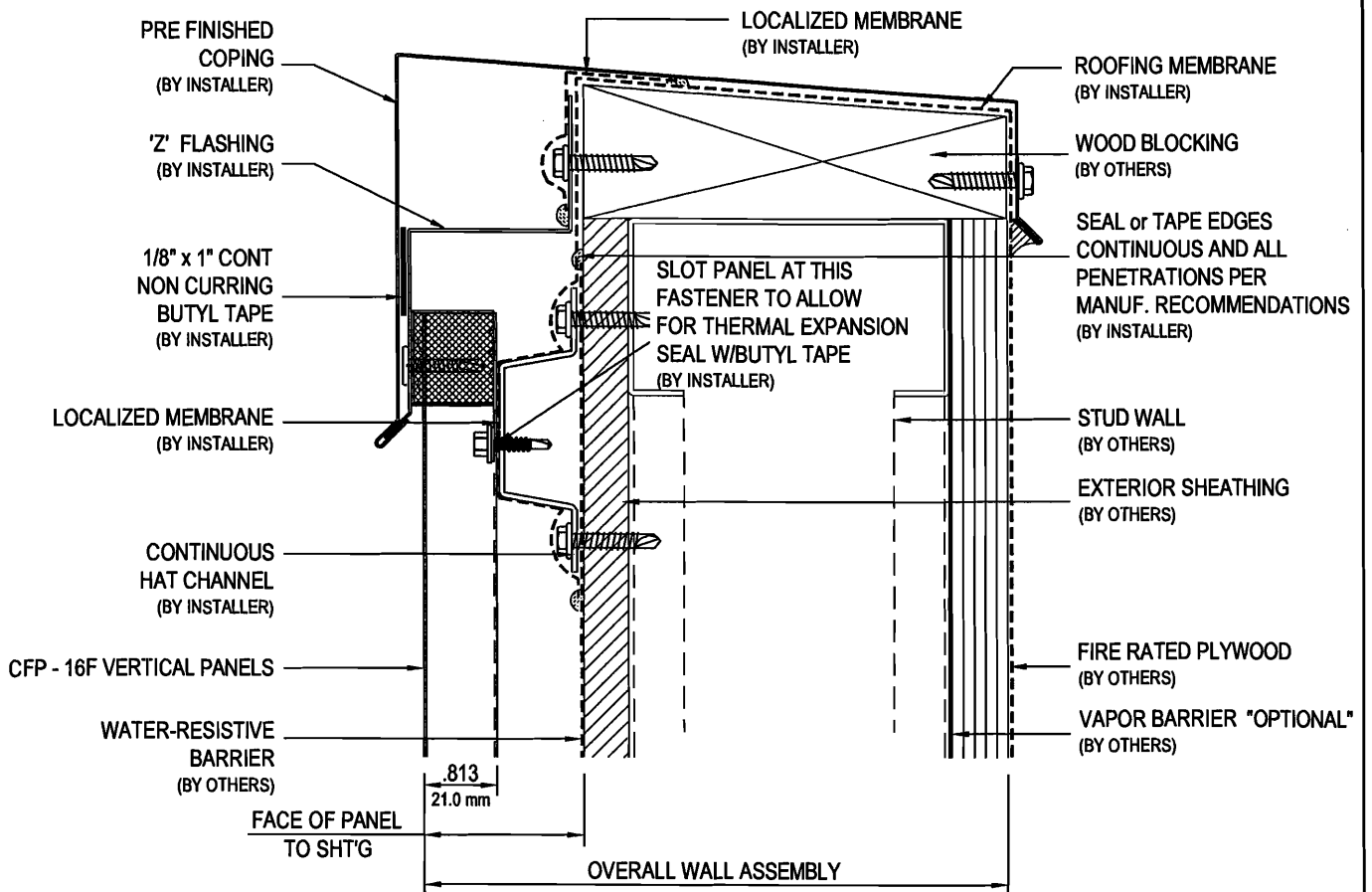


**5" EXTRUDED TRANSITION STRIP w/ FLAT FACE
CFP - HORIZONTAL PANELS - OPTION "C"**

V2.2B

Delta Series CFP-16F - PARAPET ROOF DETAIL 16F - V3.1

WALL ASSEMBLY TYPE 2



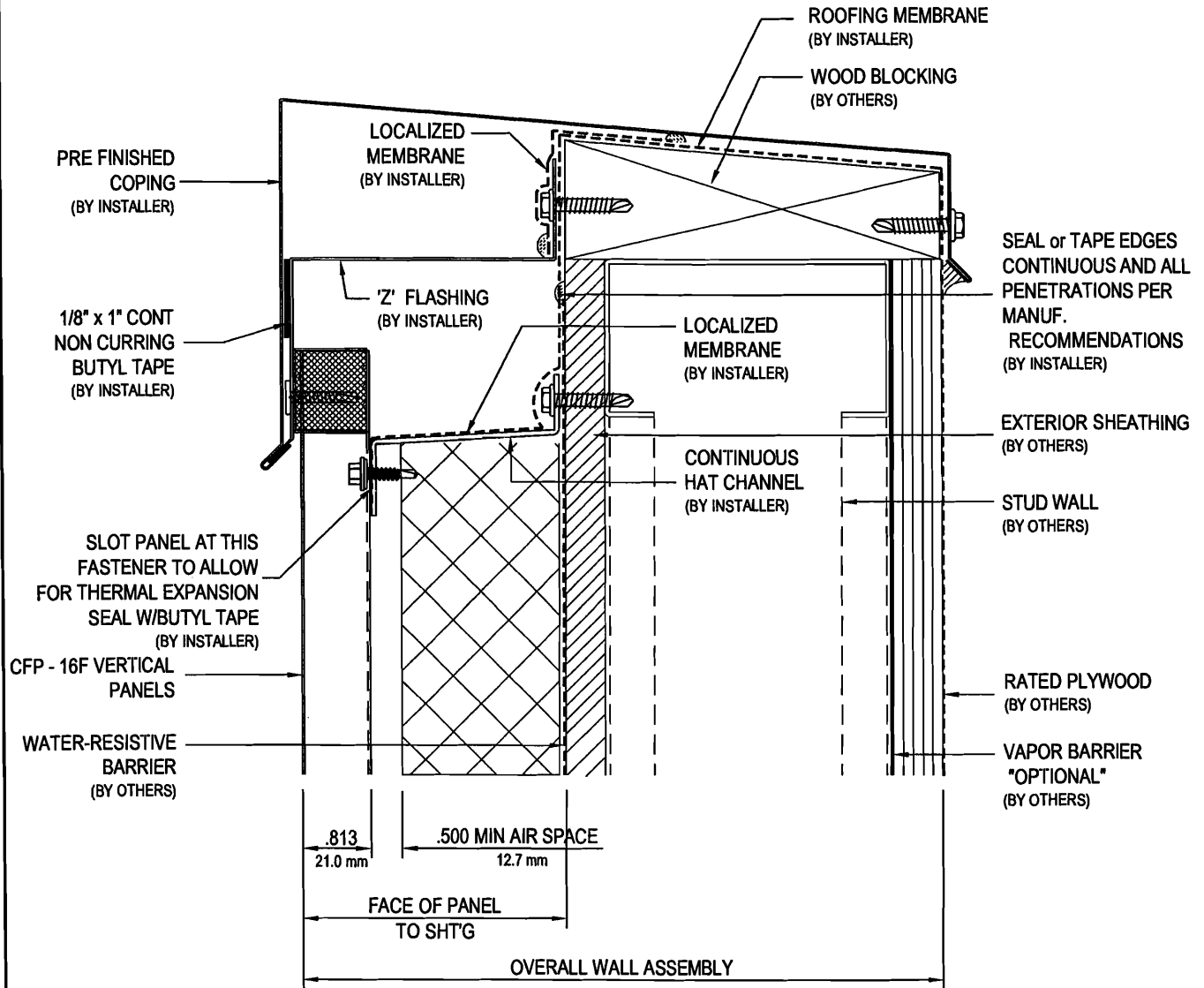
V3.1

Delta Series

CFP-16F - PARAPET ROOF DETAIL

16F - V3.2

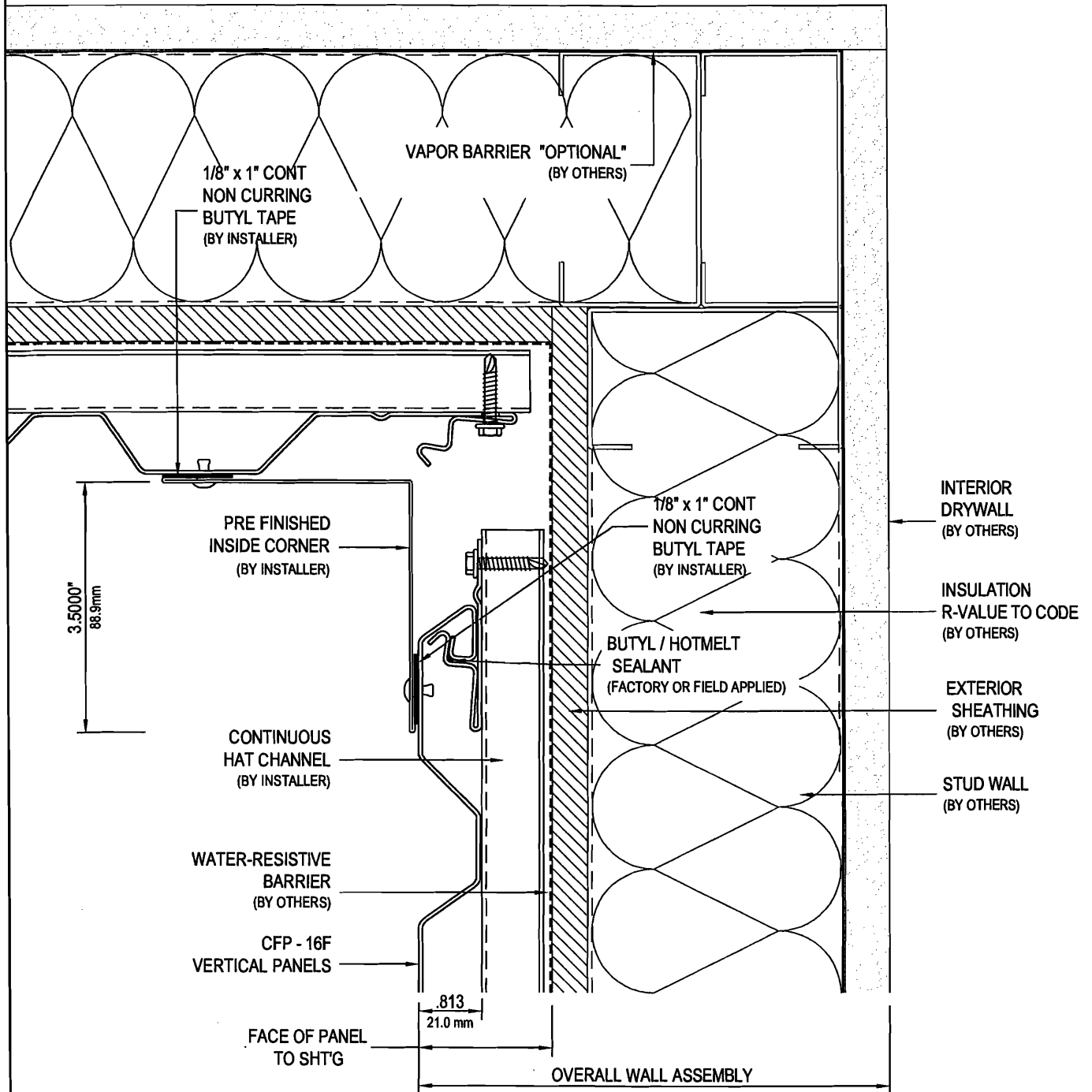
WALL ASSEMBLY TYPE 2



V3.2

Delta Series CFP-16F - INSIDE CORNER DETAIL 16F - V4.1

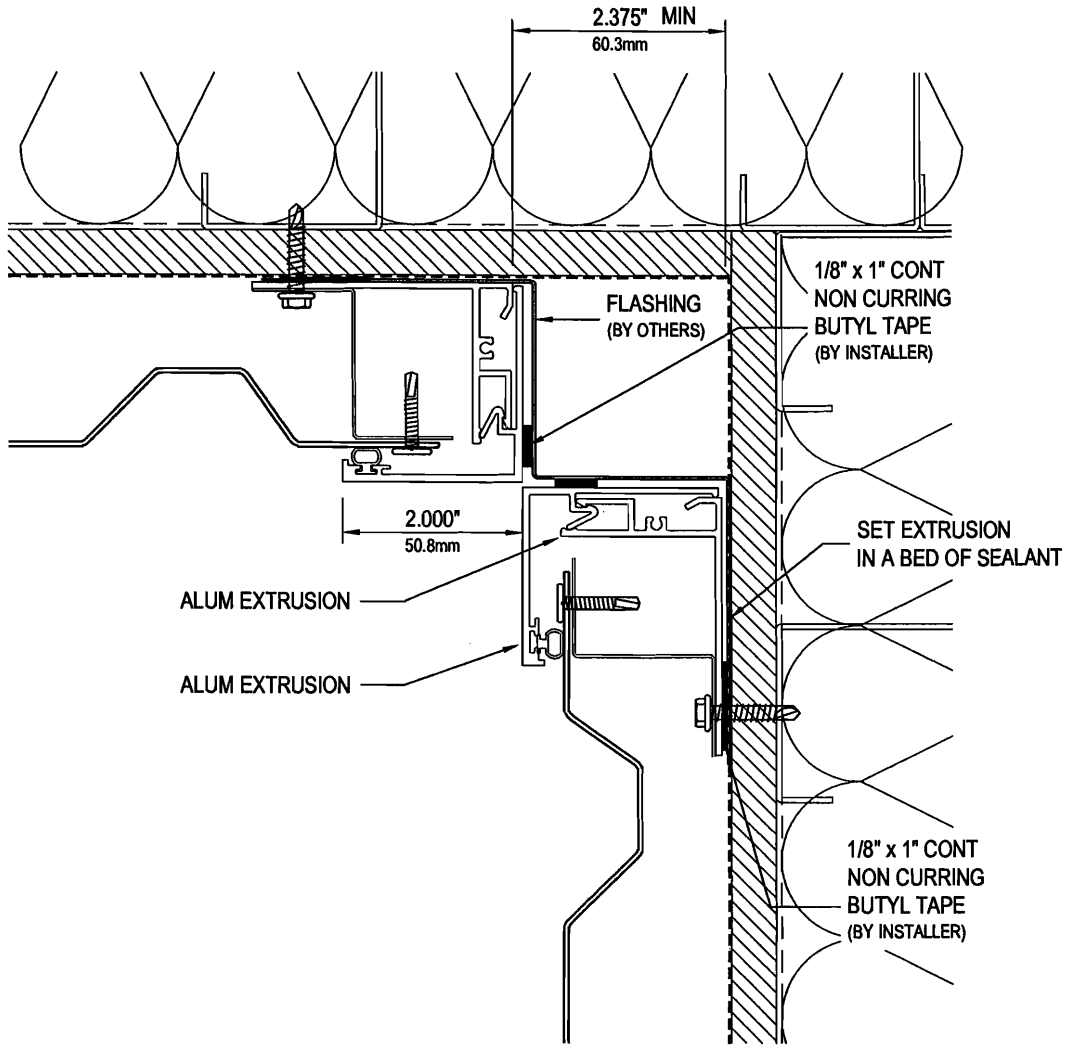
WALL ASSEMBLY TYPE 1



V4.1

Delta Series CFP-16F - INSIDE CORNER OPTION 16F - V4.1A

WALL ASSEMBLY TYPE 1

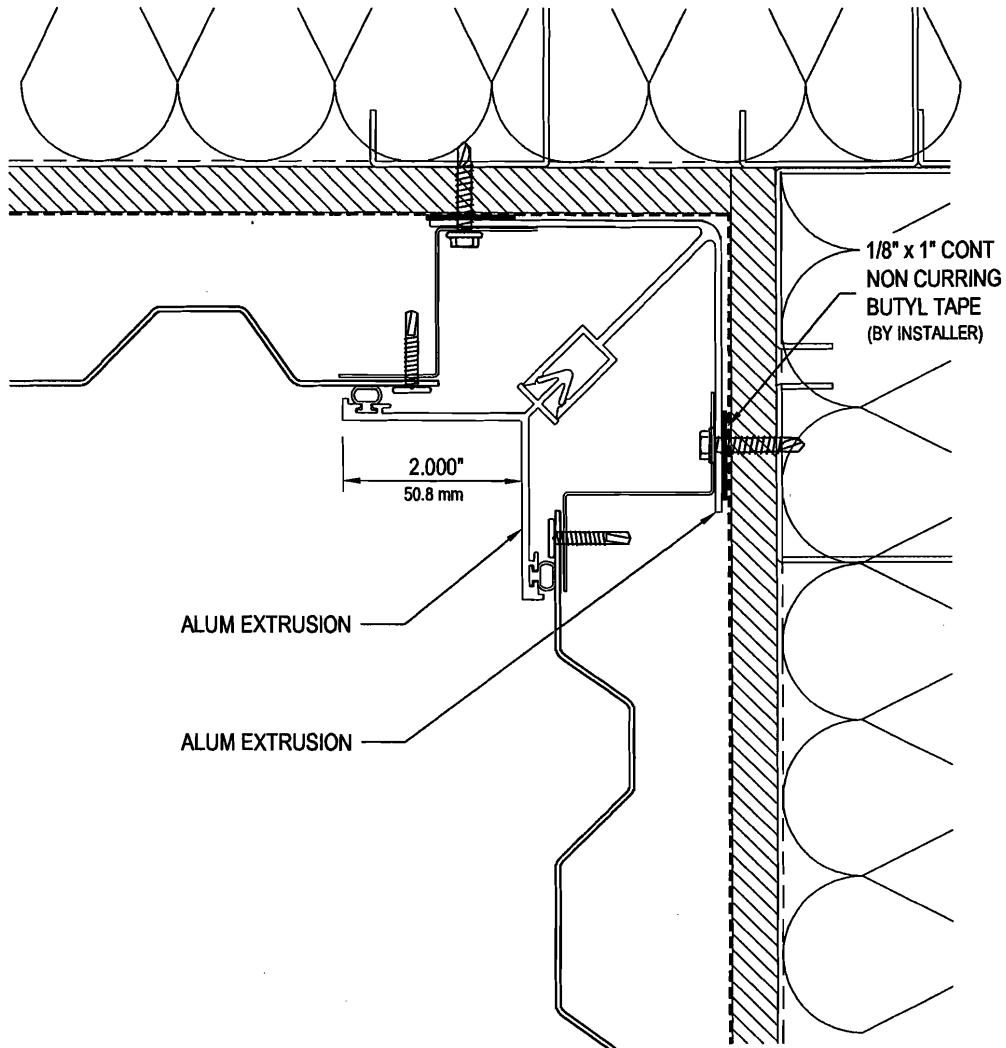


**EXTRUDED CAPTURED 90° CORNER w/ REVEAL
CFP - HORIZONTAL PANELS - OPTION 'A'**

V4.1A

Delta Series CFP-16F - INSIDE CORNER OPTION 16F - V4.1B

WALL ASSEMBLY TYPE 1

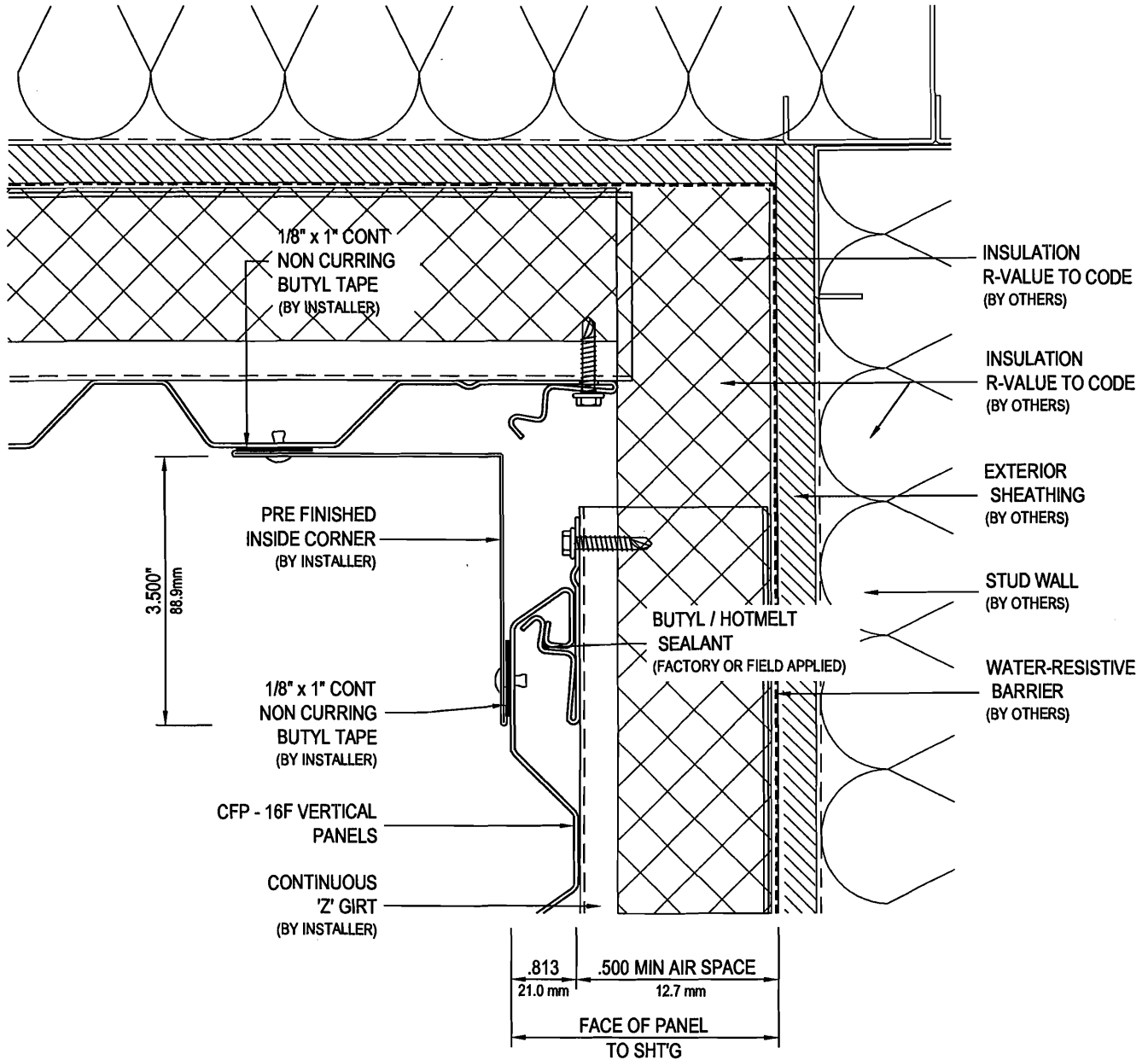


**EXTRUDED CAPTURED 90° CORNER w/ REVEAL
CFP - HORIZONTAL PANELS - OPTION 'B'**

V4.1B

Delta Series CFP-16F - INSIDE CORNER DETAIL 16F - V4.2

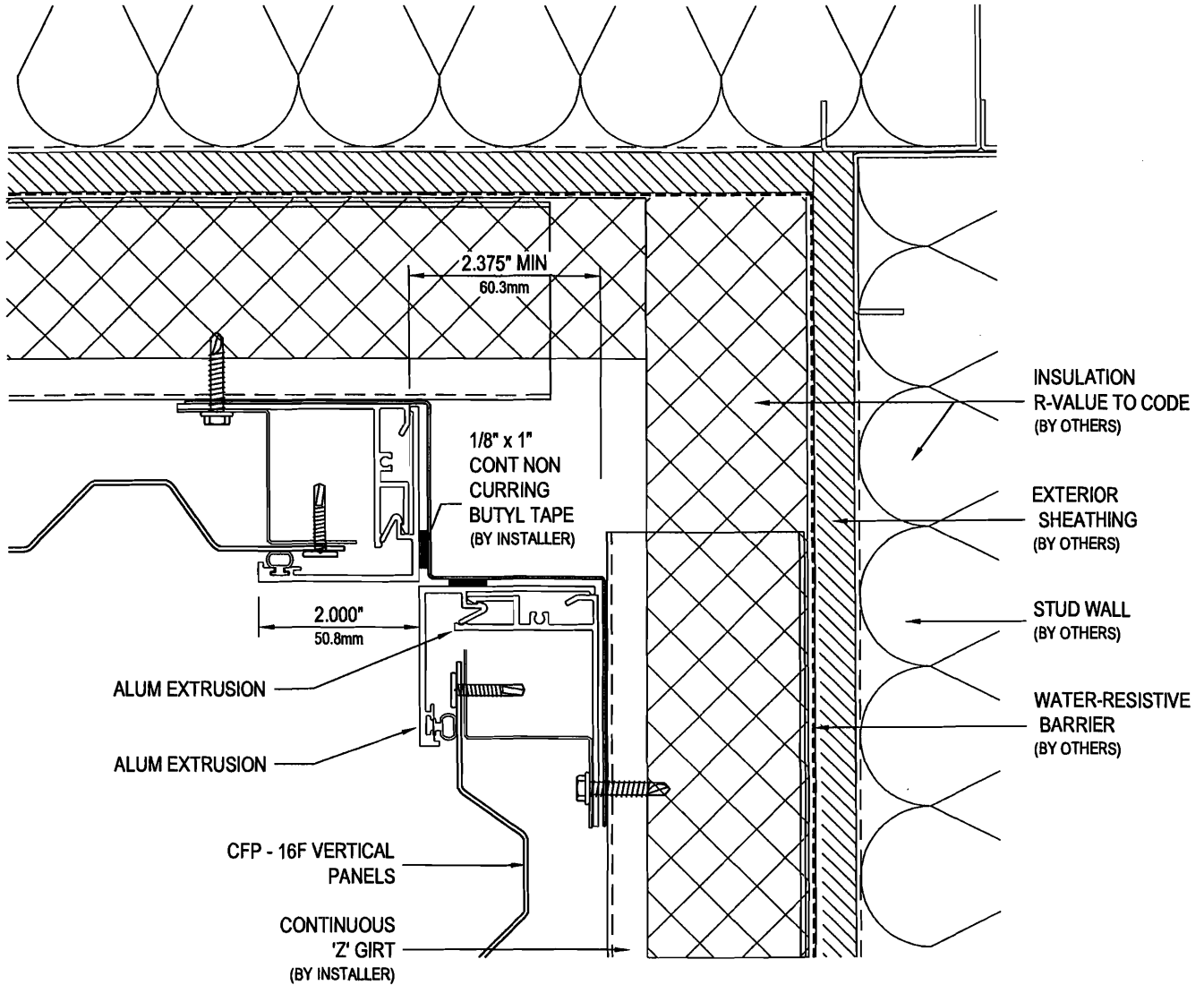
WALL ASSEMBLY TYPE 2



V4.2

Delta Series CFP-16F - INSIDE CORNER DETAIL 16F - V4.2A

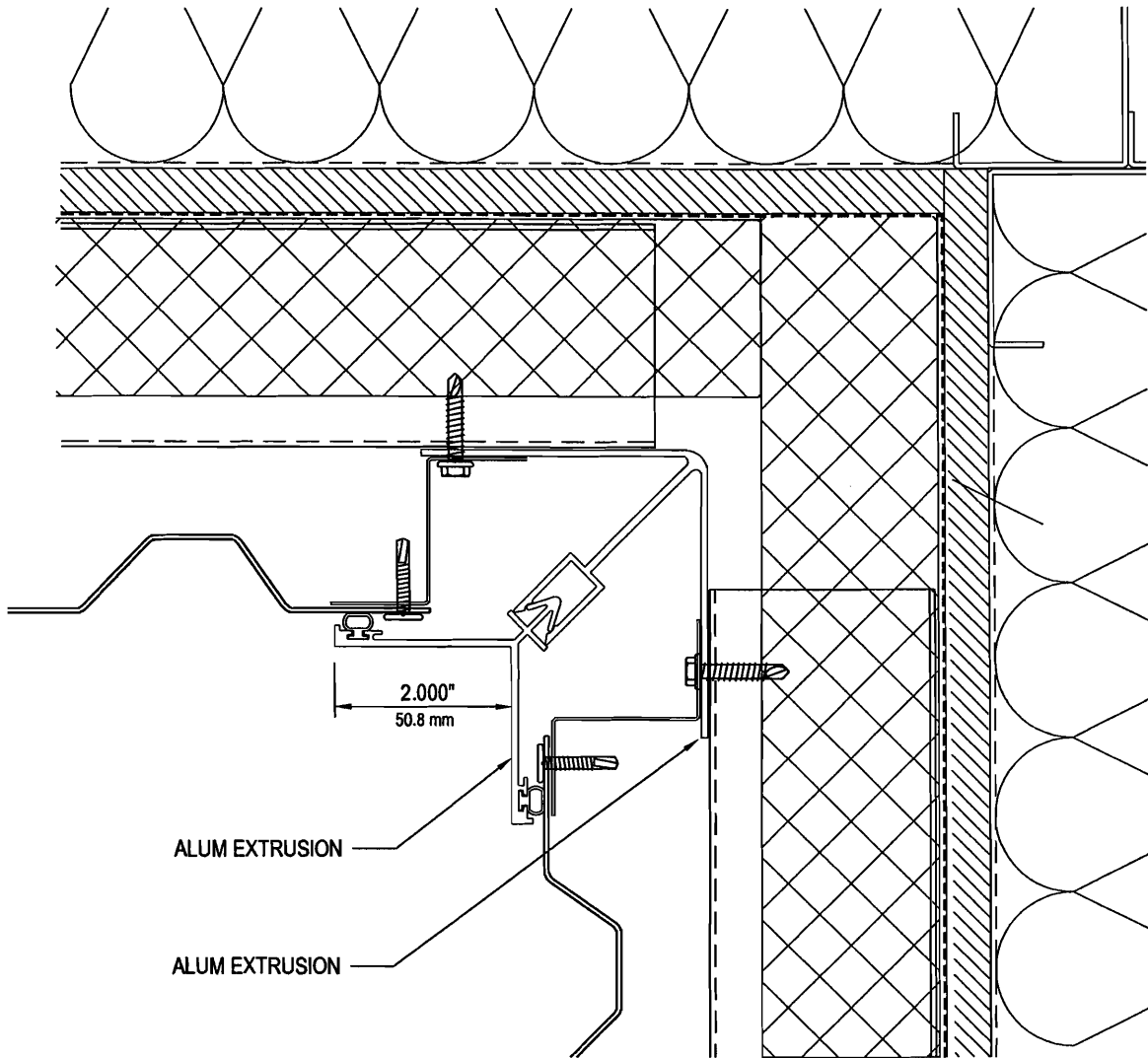
WALL ASSEMBLY TYPE 2



V4.2A

Delta Series CFP-16F - INSIDE CORNER OPTION 16F - V4.2B

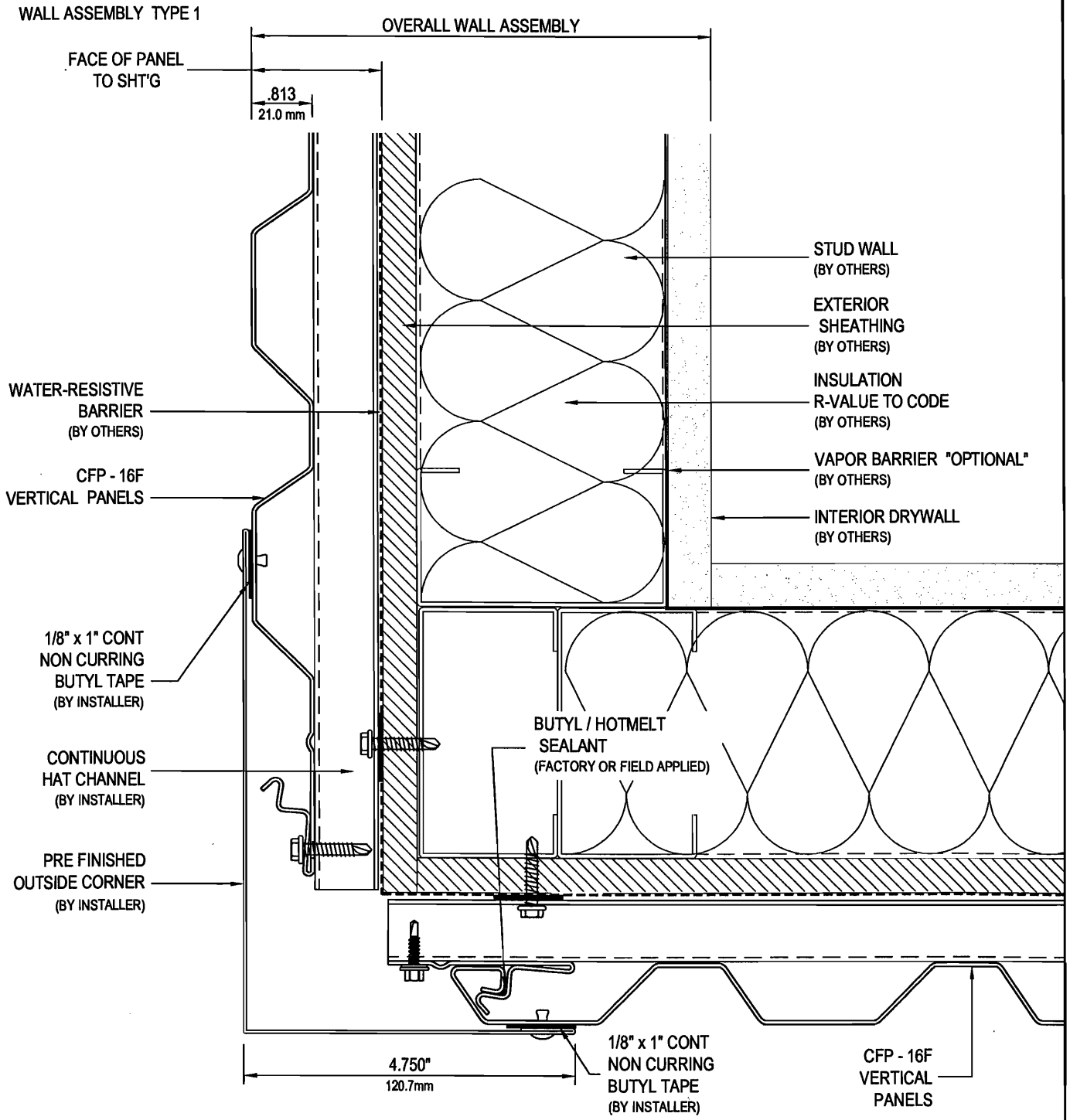
WALL ASSEMBLY TYPE 2



**EXTRUDED CAPTURED 90° CORNER w/ REVEAL
CFP - HORIZONTAL PANELS - OPTION 'B'**

V4.2B

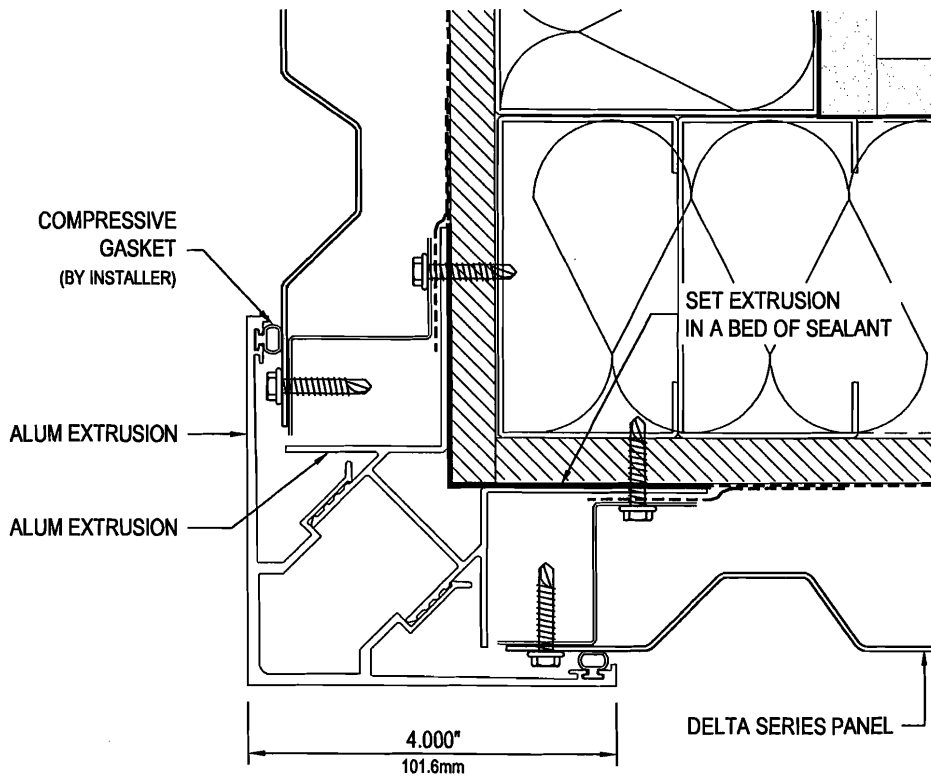
Delta Series CFP-16F - OUTSIDE CORNER DETAIL 16F - V5.1



V5.1

Delta Series CFP-16F - OUTSIDE CORNER OPTION 16F - V5.1A

WALL ASSEMBLY TYPE 1

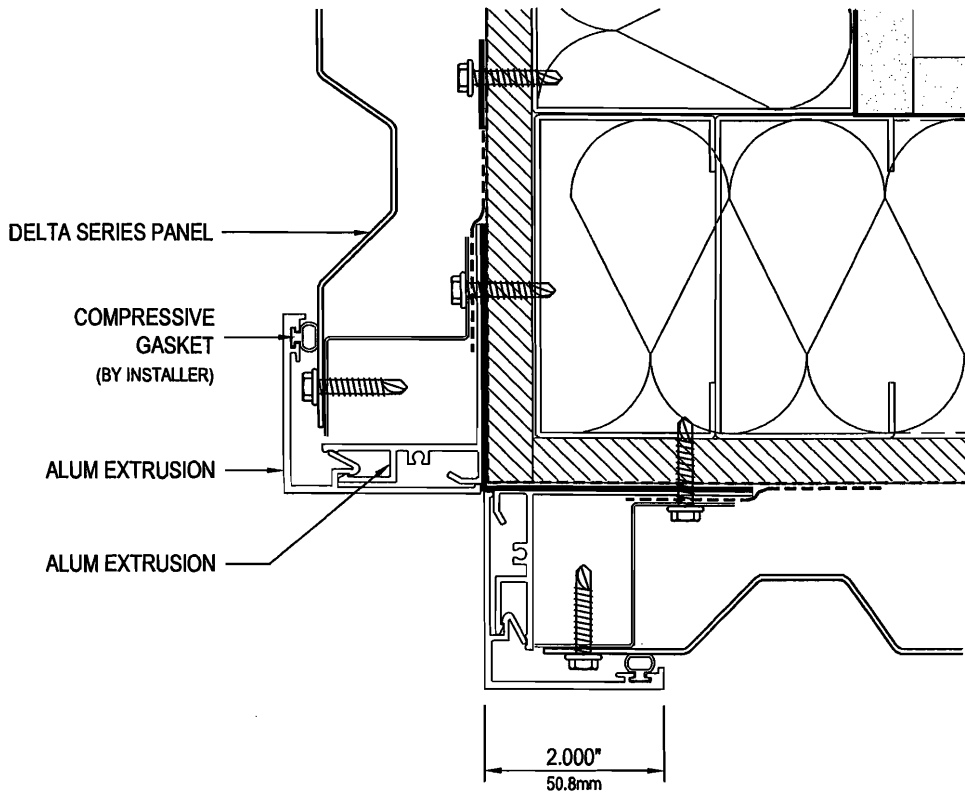


**EXTRUDED CAPTURED 90° CORNER w/ FLAT FACE OPTION
CFP - HORIZONTAL PANELS - OPTION 'A'**

V5.1A

Delta Series CFP-16F - OUTSIDE CORNER OPTION 16F - V5.1B

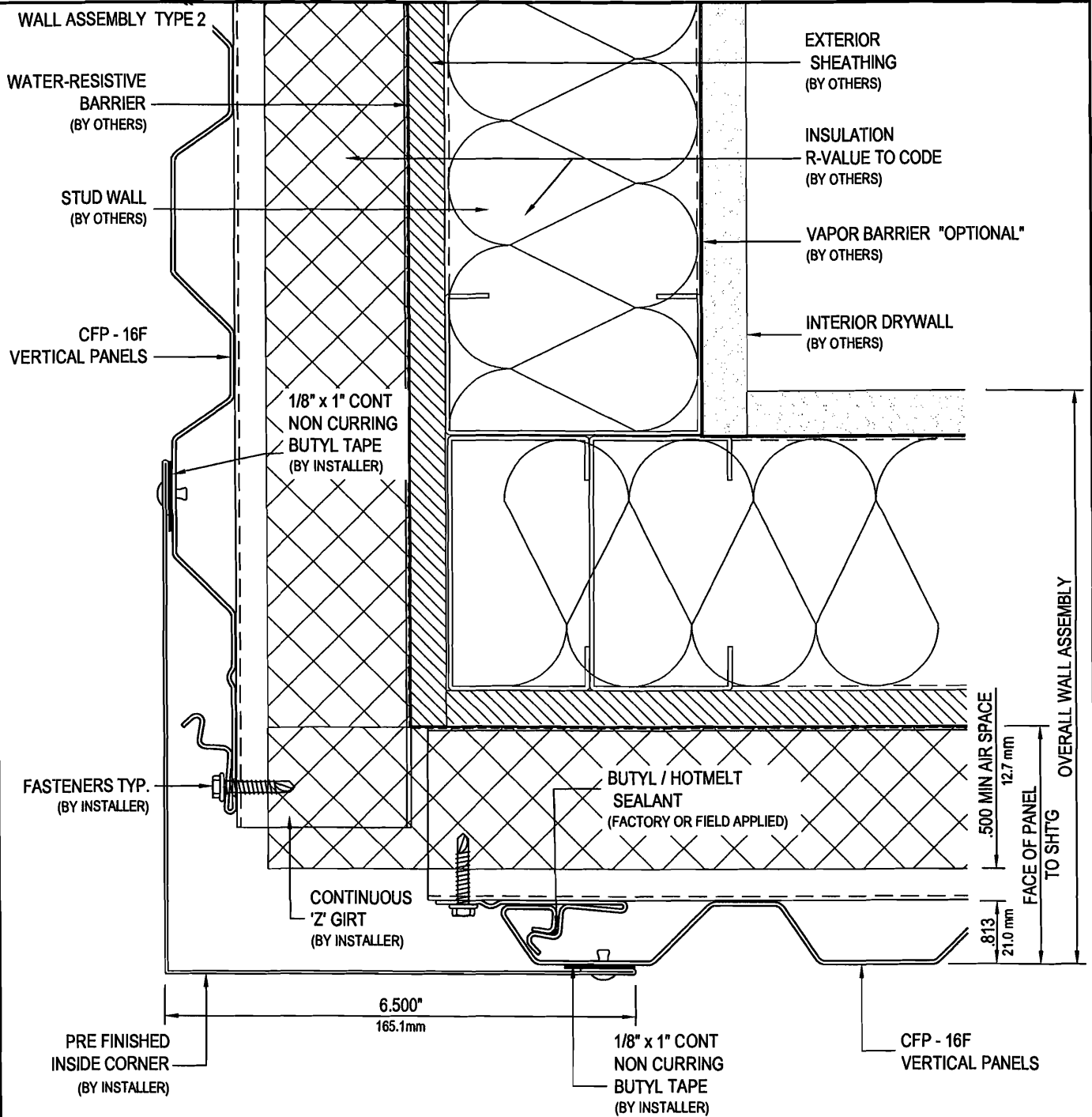
WALL ASSEMBLY TYPE 1



**EXTRUDED CAPTURED 90° CORNER w/ REVEAL OPTION
CFP - HORIZONTAL PANELS - OPTION 'B'**

V5.1B

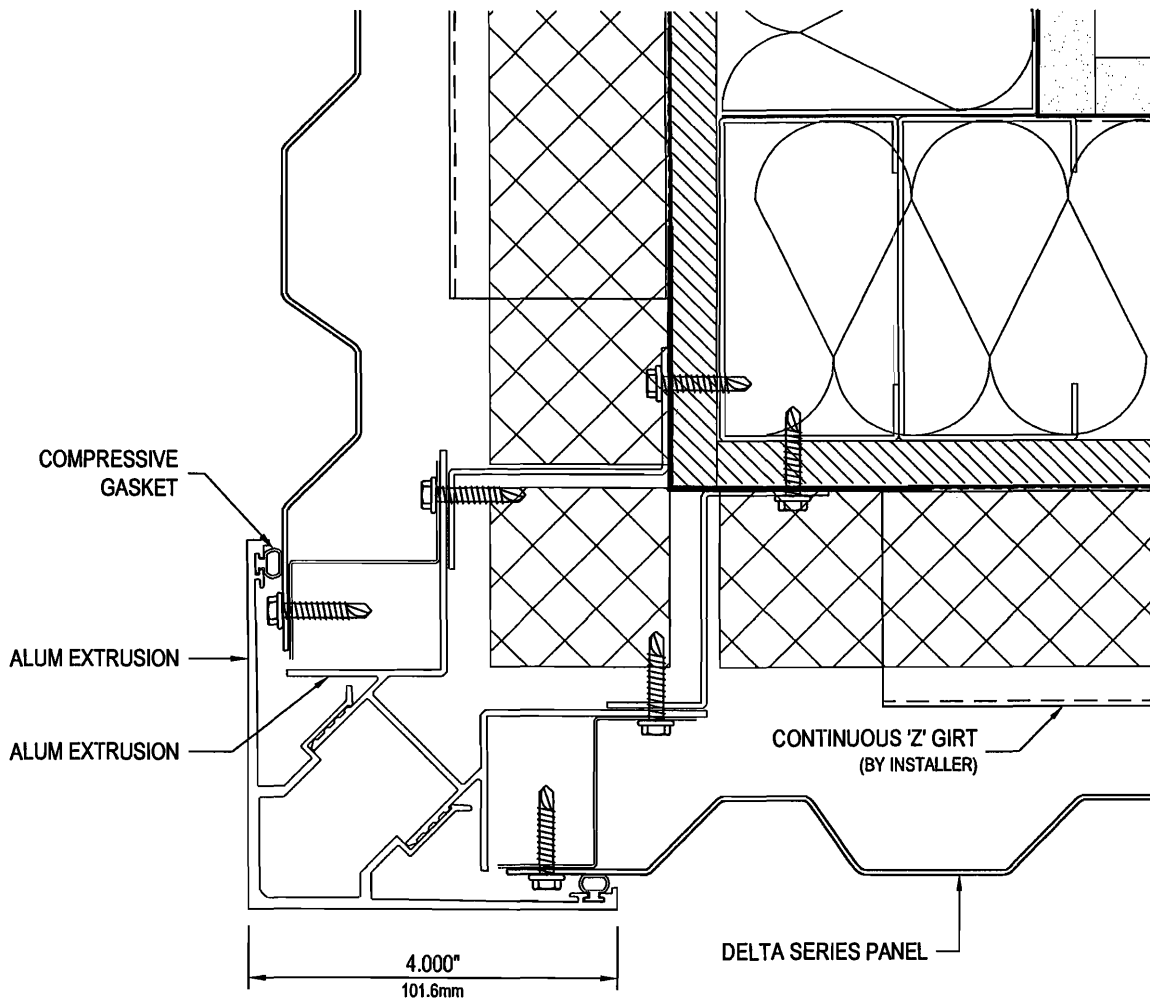
Delta Series CFP-16F - OUTSIDE CORNER DETAIL 16F - V5.2



V5.2

Delta Series CFP-16F - OUTSIDE CORNER DETAIL 16F - V5.2A

WALL ASSEMBLY TYPE 2

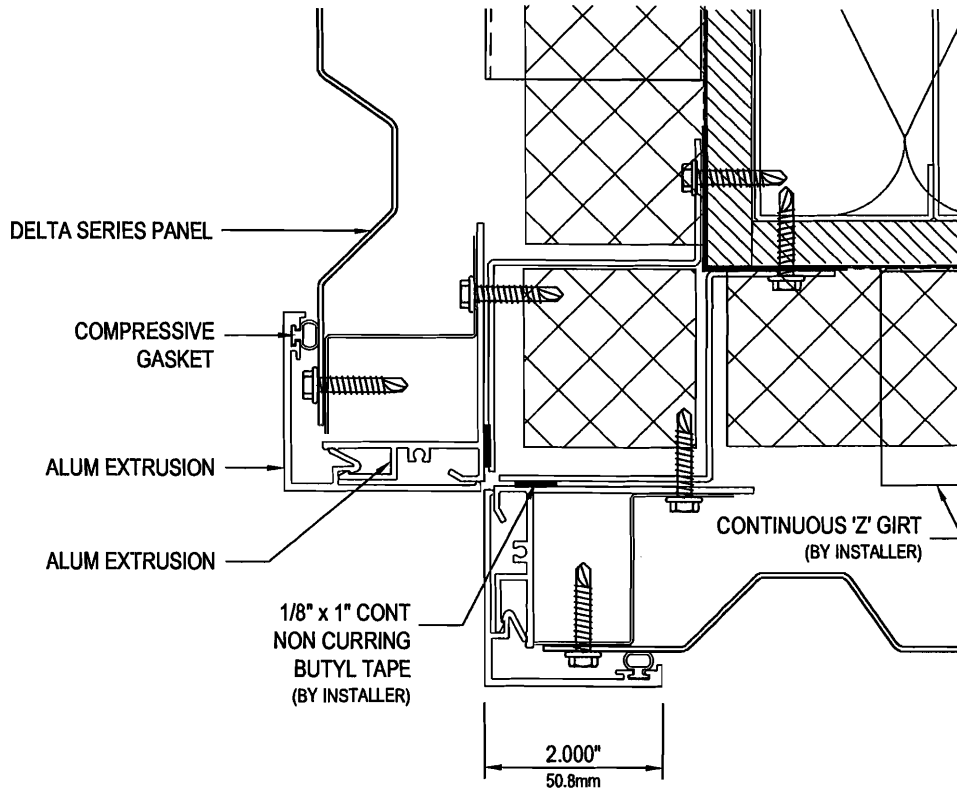


**EXTRUDED CAPTURED 90° CORNER w/ FLAT FACE OPTION
CFP - HORIZONTAL PANELS - OPTION 'A'**

V5.2A

Delta Series CFP-16F - OUTSIDE CORNER DETAIL 16F - V5.2B

WALL ASSEMBLY TYPE 2



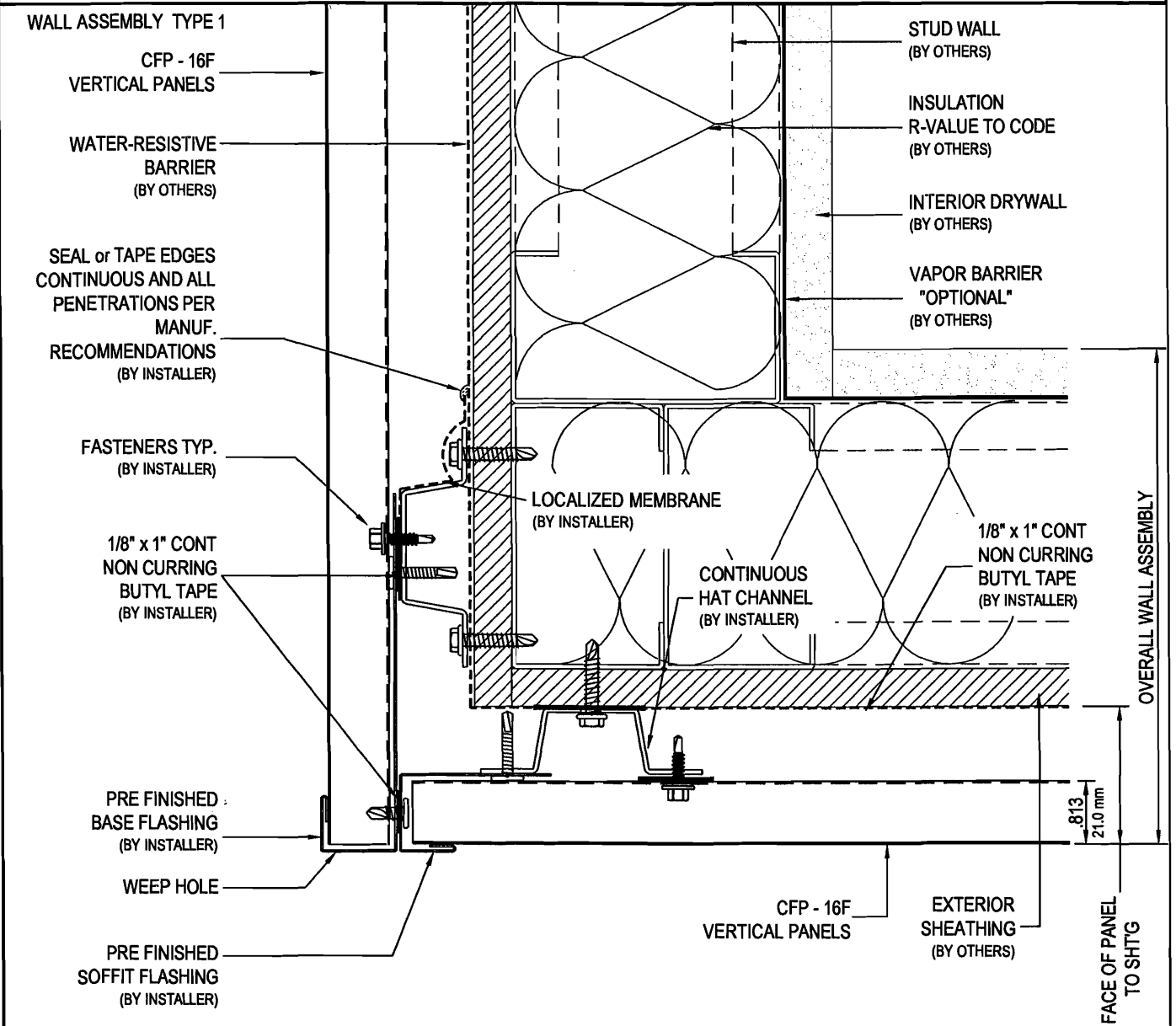
**EXTRUDED CAPTURED 90° CORNER w/ REVEAL OPTION
CFP - HORIZONTAL PANELS - OPTION 'B'**

V5.2B

Delta Series

CFP-16F - SOFFIT DETAIL

16F - V6.1

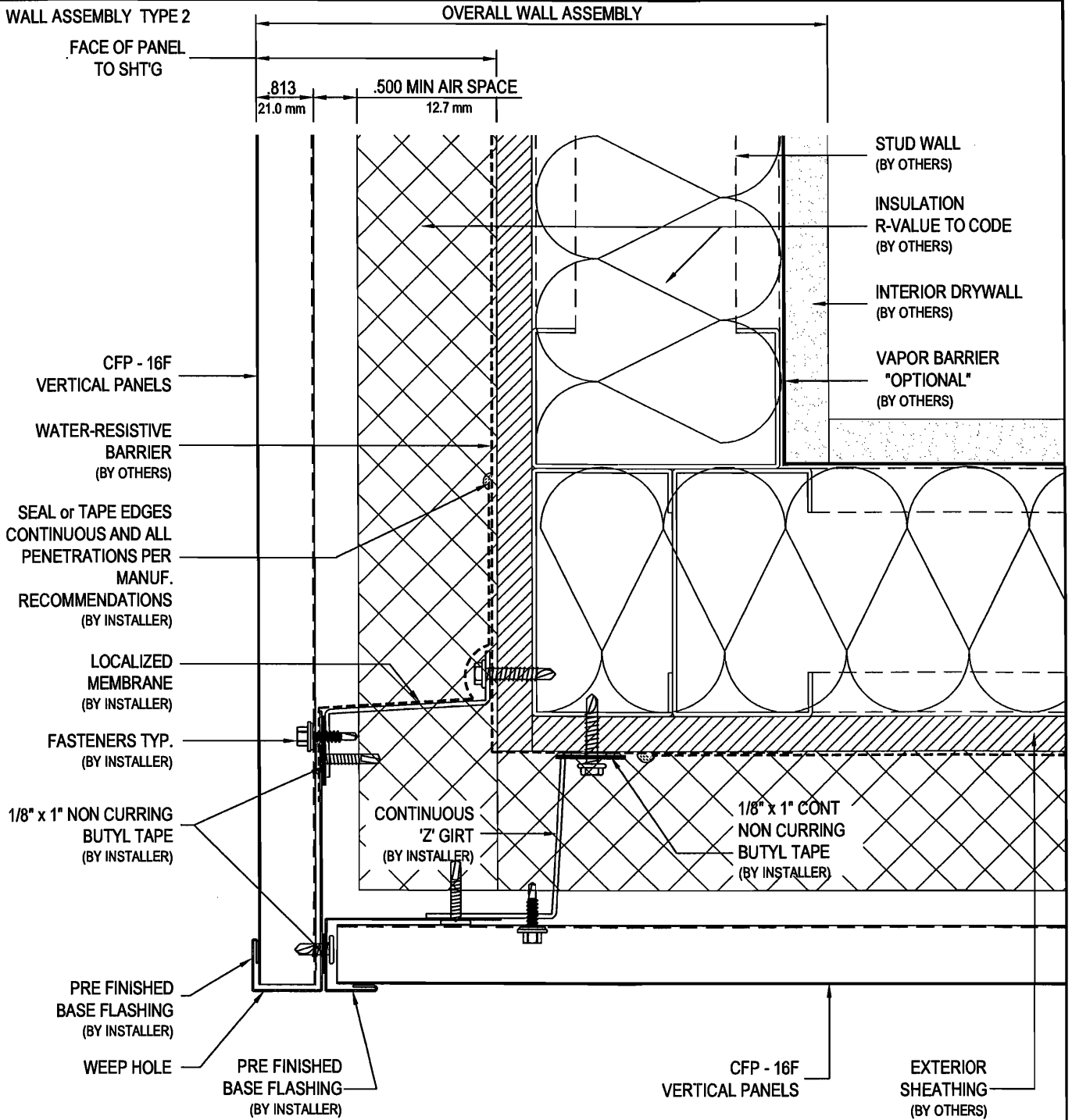


V6.1

Delta Series

CFP-16F - SOFFIT DETAIL

16F - V6.2



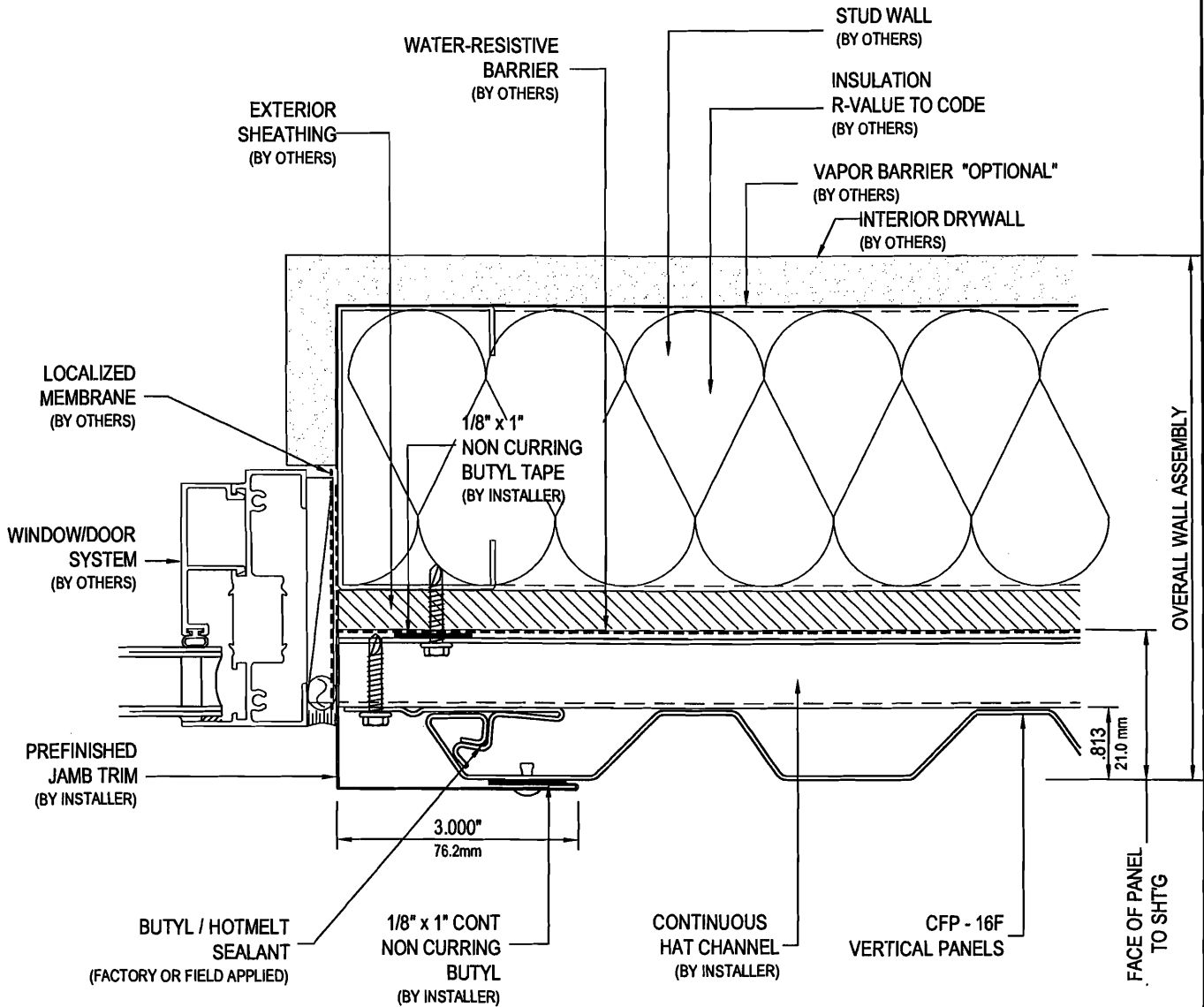
V6.2

Delta Series

CFP-16F - WINDOW JAMB DETAIL

16F - V7.1

WALL ASSEMBLY TYPE 1



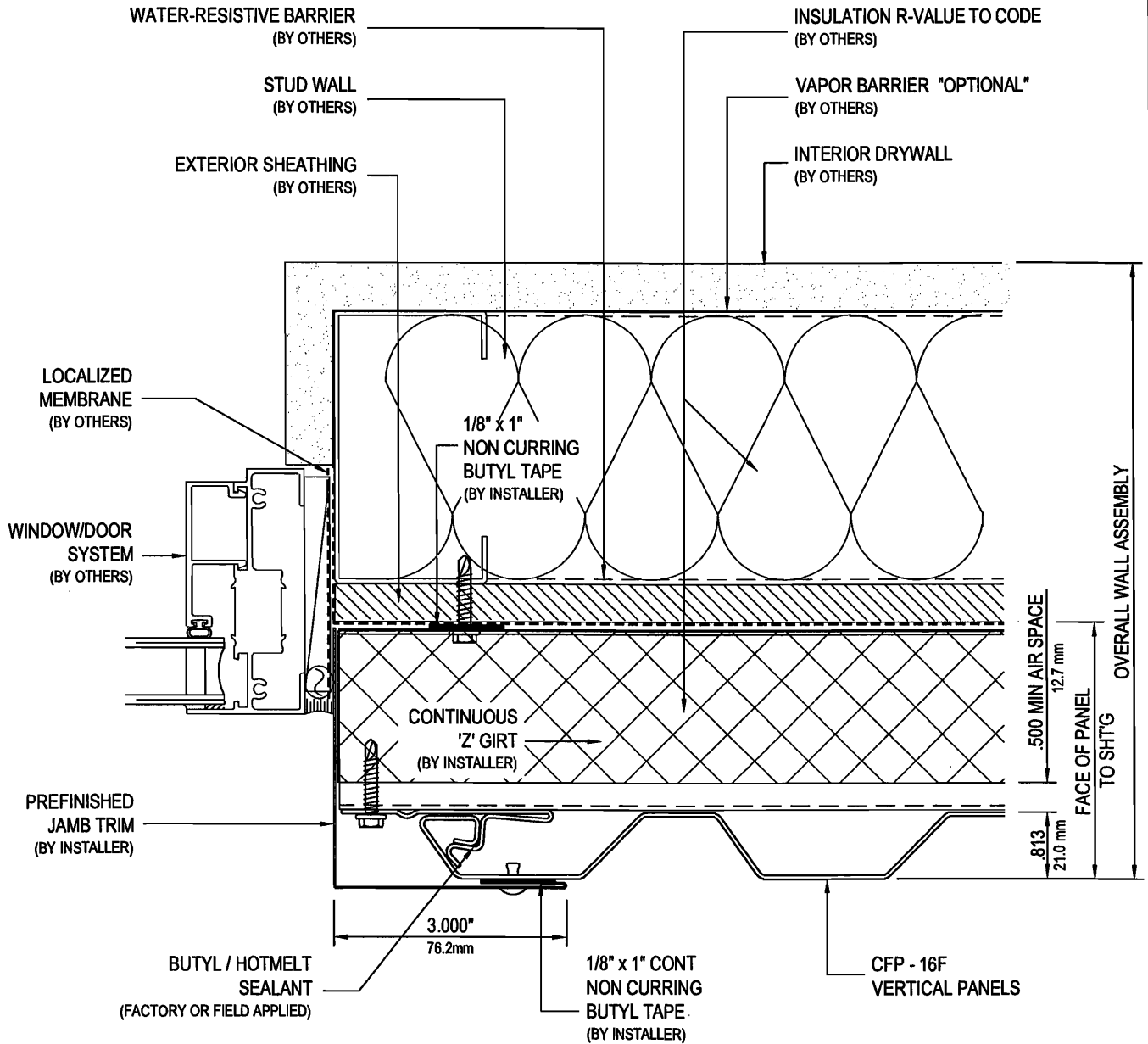
V7.1

Delta Series

CFP-16F - WINDOW JAMB DETAIL

16F - V7.2

WALL ASSEMBLY TYPE 2



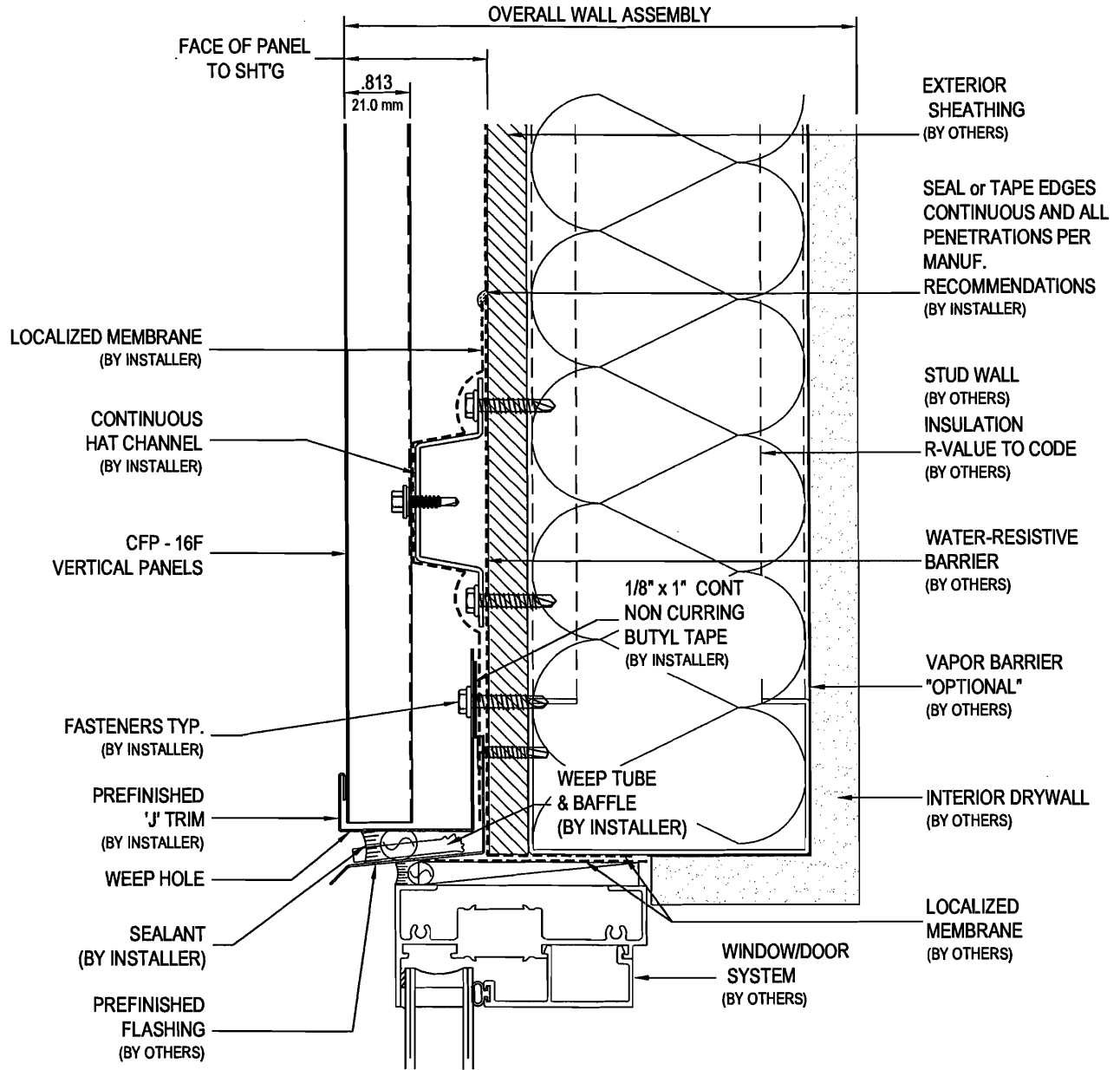
V7.2

Delta Series

CFP-16F - WINDOW HEAD DETAIL

16F - V8.1

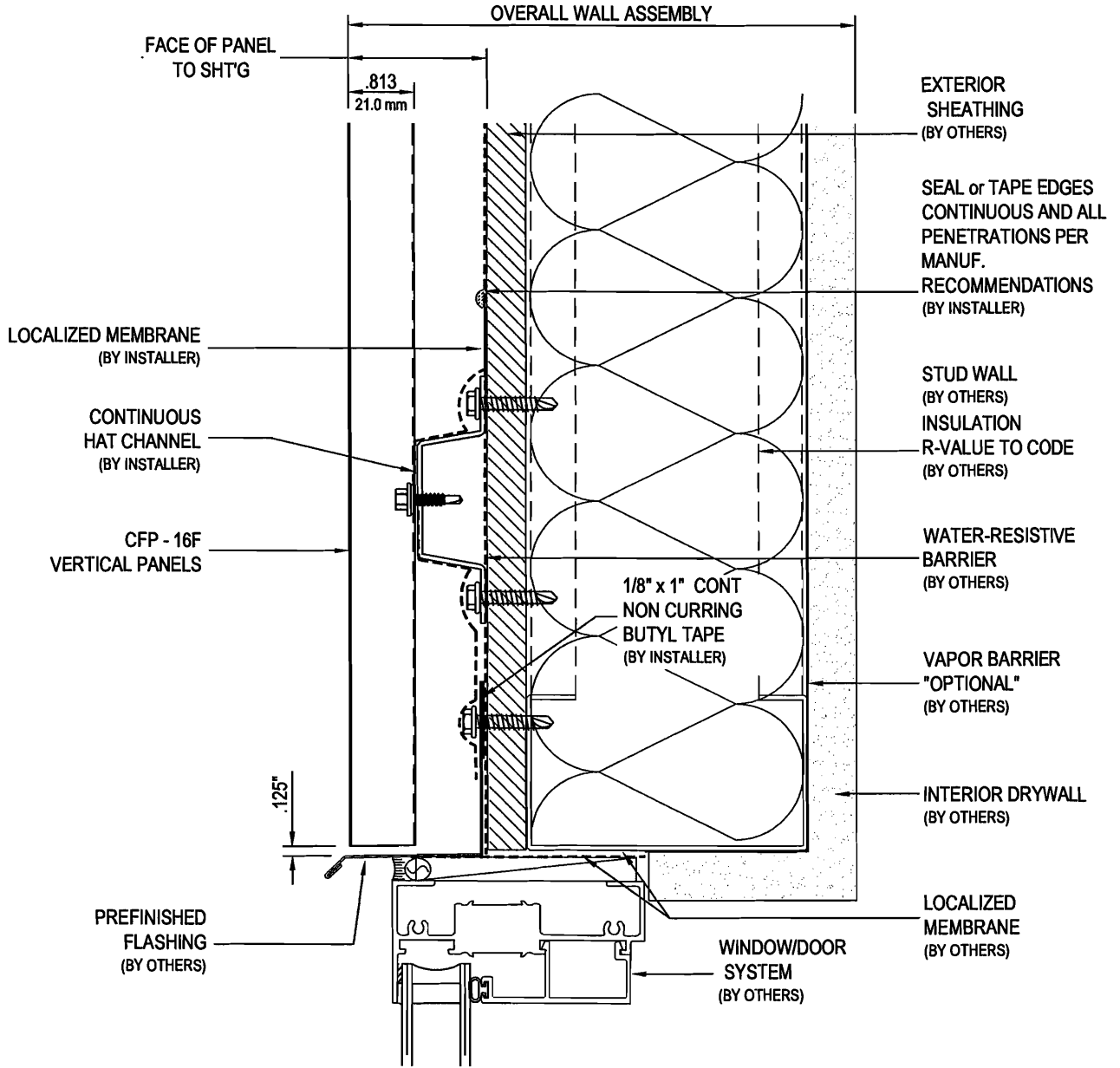
WALL ASSEMBLY TYPE 1



V8.1

Delta Series CFP-16F - WINDOW HEAD DETAIL 16F - V8.1A

WALL ASSEMBLY TYPE 1



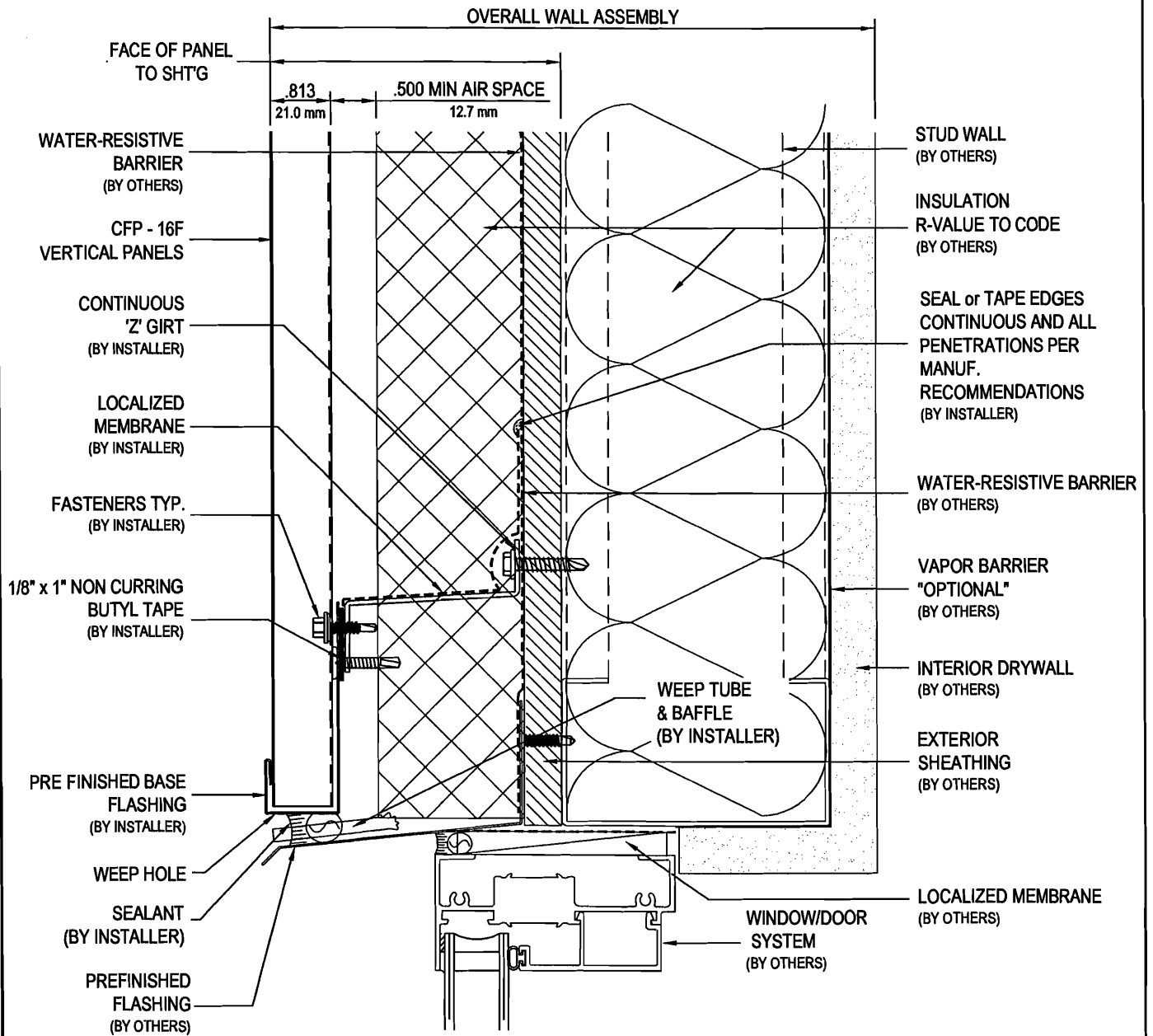
V8.1 OPTION A

Delta Series

CFP-16F - WINDOW HEAD DETAIL

16F - V8.2

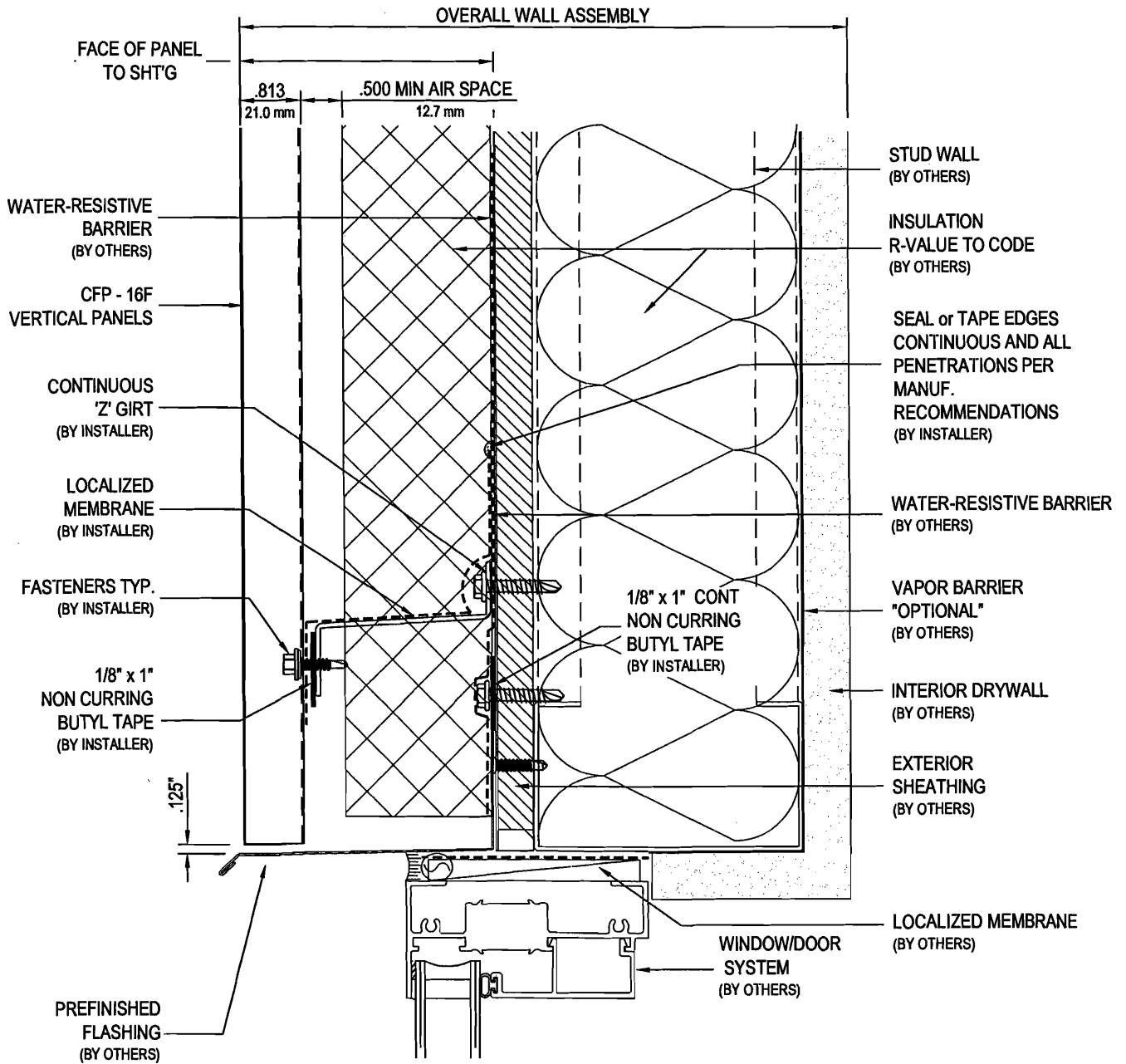
WALL ASSEMBLY TYPE 2



V8.2

Delta Series CFP-16F - WINDOW HEAD DETAIL 16F - V8.2A

WALL ASSEMBLY TYPE 2



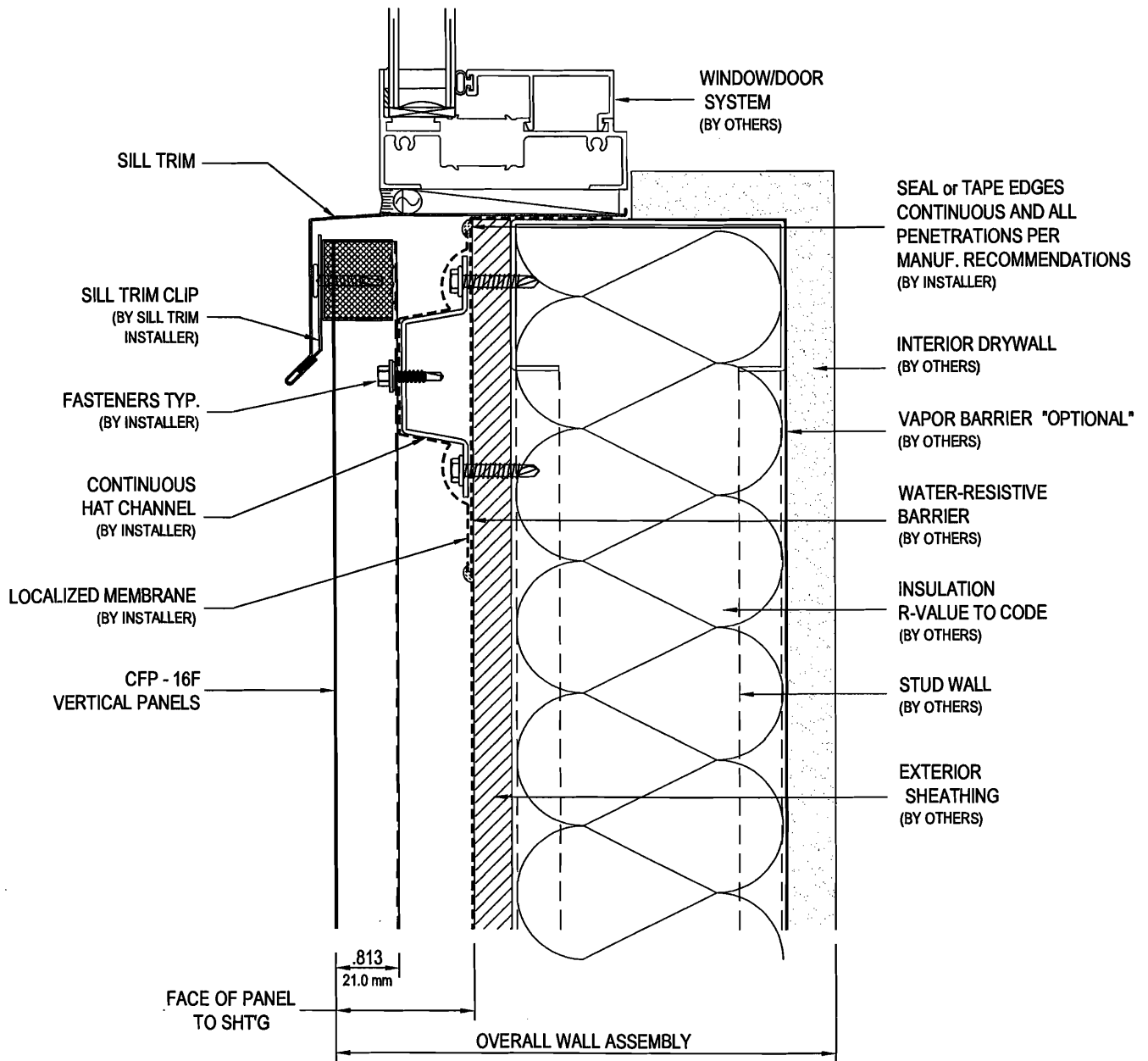
V8.2 OPTION A

Delta Series

CFP-16F - WINDOW SILL DETAIL

16F - V9.1

WALL ASSEMBLY TYPE 1



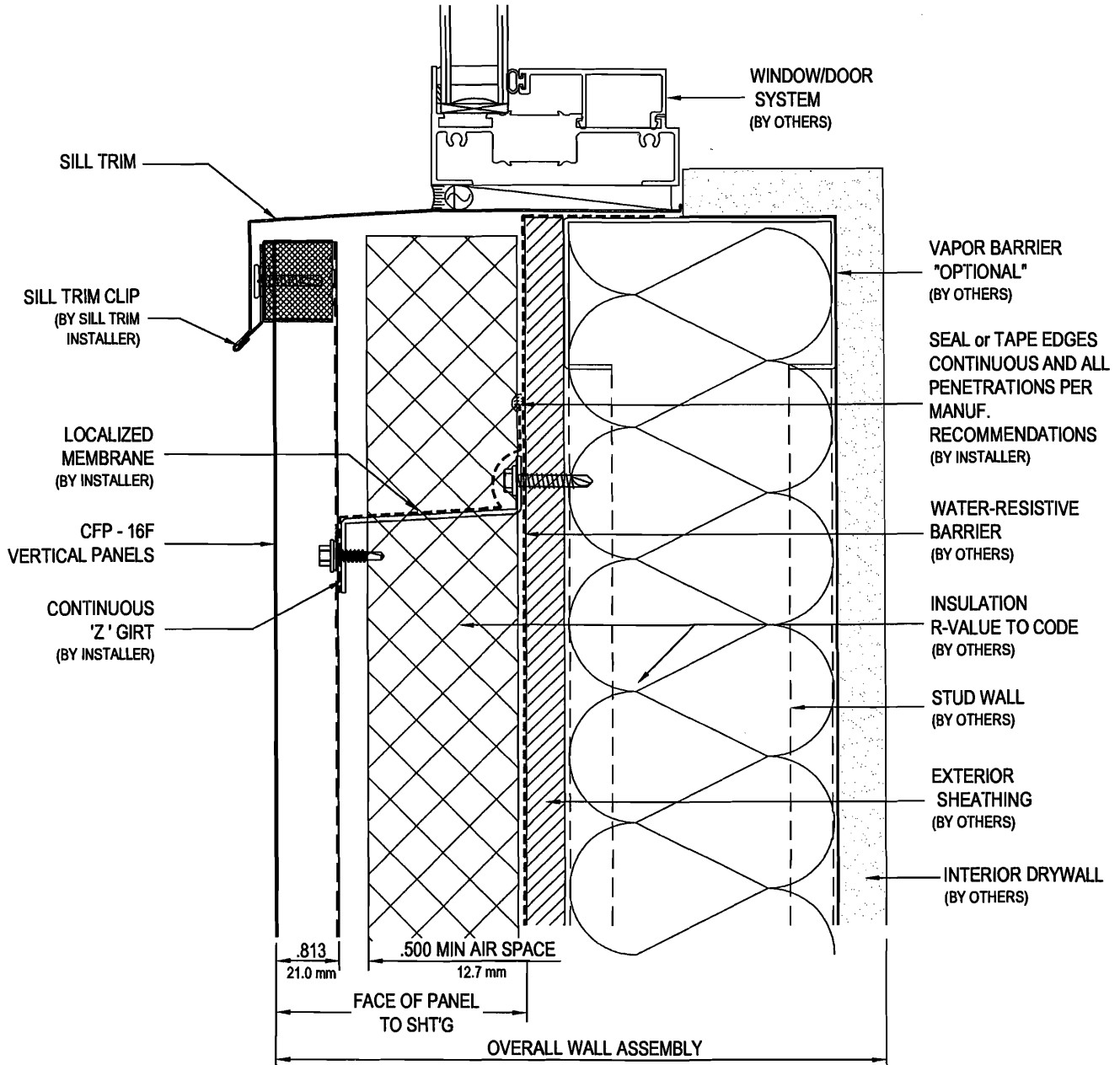
V9.1

Delta Series

CFP-16F - WINDOW SILL DETAIL

16F - V9.2

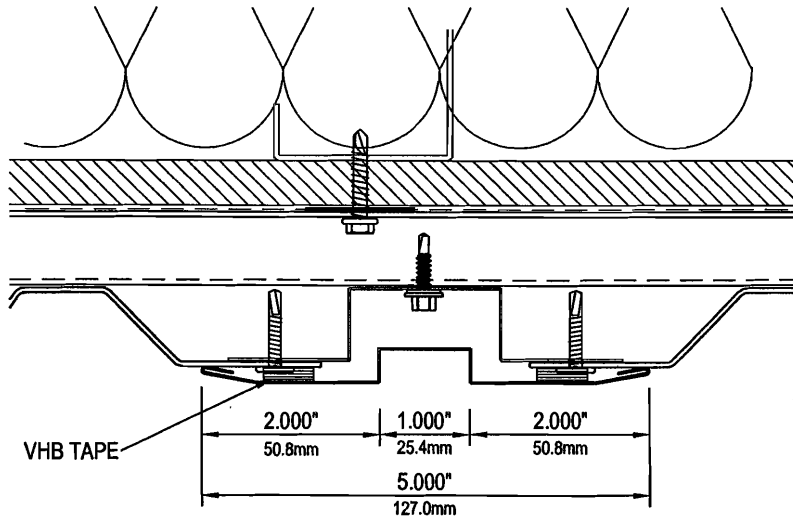
WALL ASSEMBLY TYPE 2



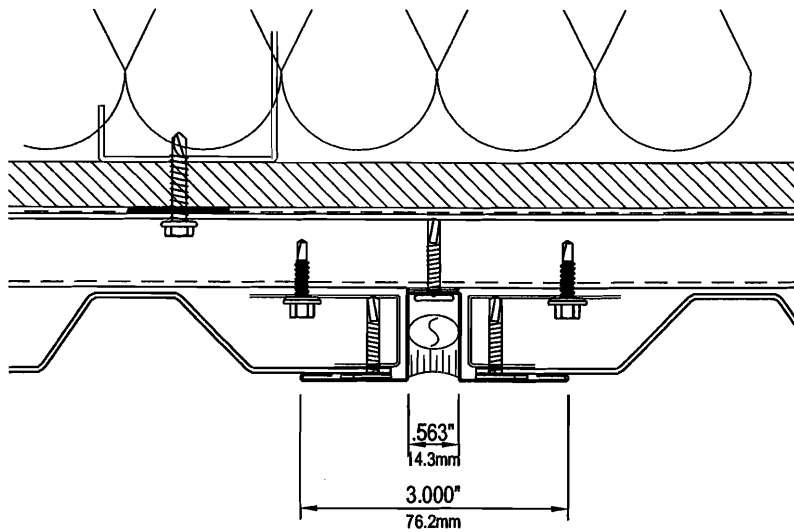
V9.2

Delta Series CFP-16F - VERTICAL TRANSITIONS 16F - V10.1

WALL ASSEMBLY TYPE 1



**5" FORMED TRANSITION STRIP w/ REVEAL
VERTICAL PANELS - STD. DETAIL**

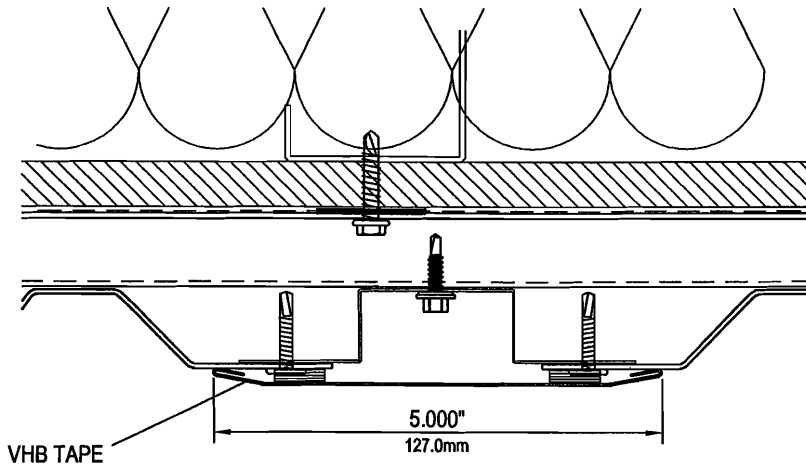


**3" FORMED TRANSITION STRIP w/ SEAL JOINT
CFP - VERTICAL PANELS - OPTION 'A'**

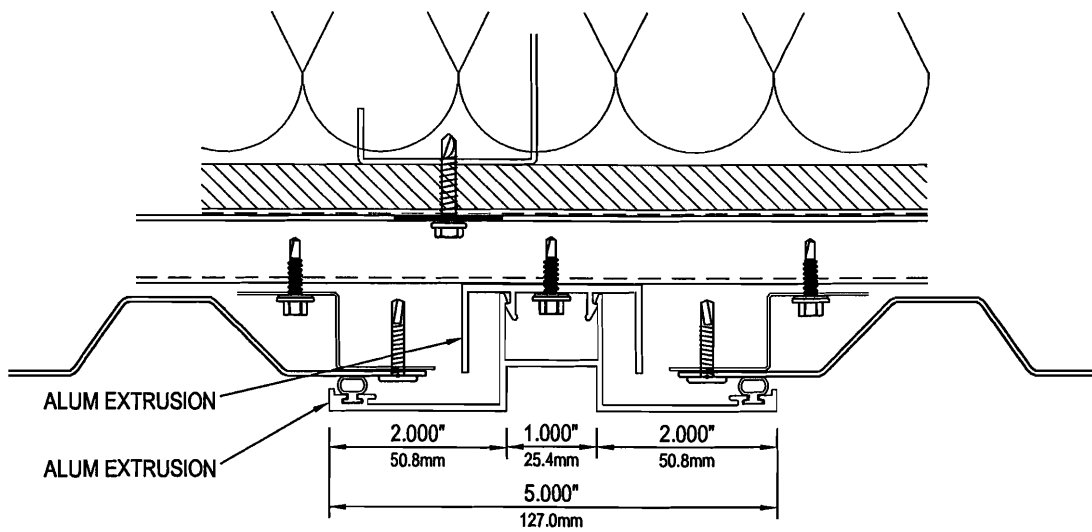
V10.1

Delta Series CFP-16F - VERTICAL TRANSITIONS 16F - V10.2

WALL ASSEMBLY TYPE 1



5" FORMED TRANSITION STRIP w/ FLAT FACE
CFP - VERTICAL PANELS - OPTION 'B'



5" EXTRUDED TRANSITION STRIP w/ REVEAL
CFP - VERTICAL PANELS - 'C'

V10.2

Firestone

METAL PRODUCTS

UNA-CLAD

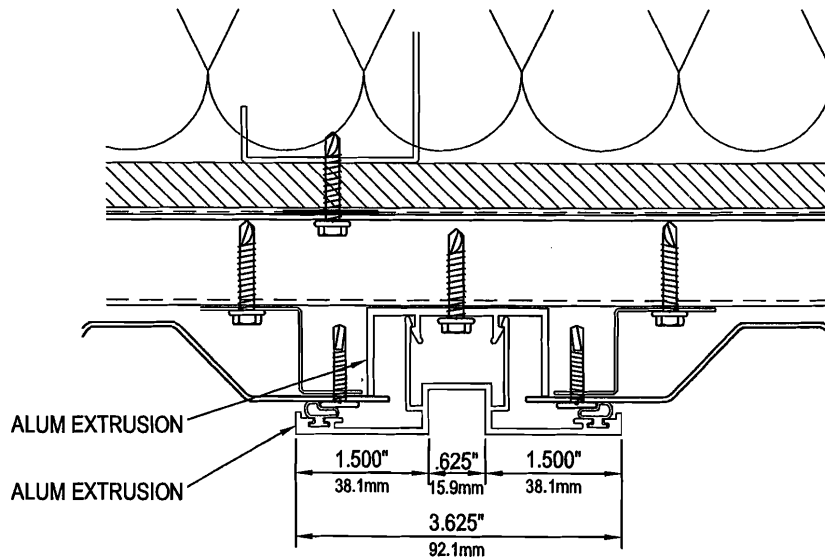
1-800-426-7737 WWW.UNACLAD.COM

Delta Series

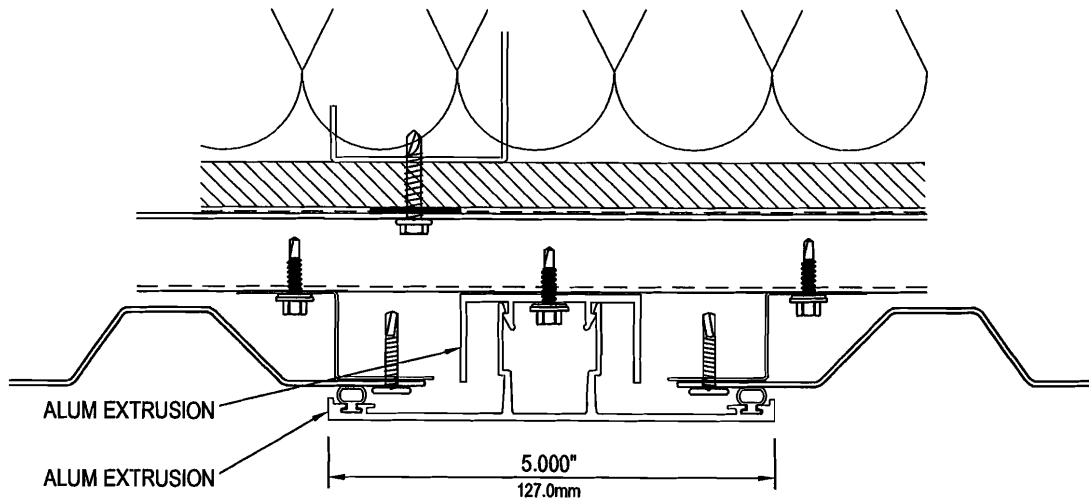
CFP-16F - VERTICAL TRANSITIONS

16F - V10.3

WALL ASSEMBLY TYPE 1



**3-5/8" EXTRUDED TRANSITION STRIP w/ REVEAL
CFP - VERTICAL PANELS - OPTION 'D'**



**5" EXTRUDED TRANSITION STRIP w/ FLAT FACE
CFP - VERTICAL PANELS - OPTION 'E'**

V10.3

Copyright © FIRESTONE METAL PRODUCTS/UNA-CLAD

1001 Lund Boulevard, Anoka, Minnesota 55303

Toll Free (800) 426-7737

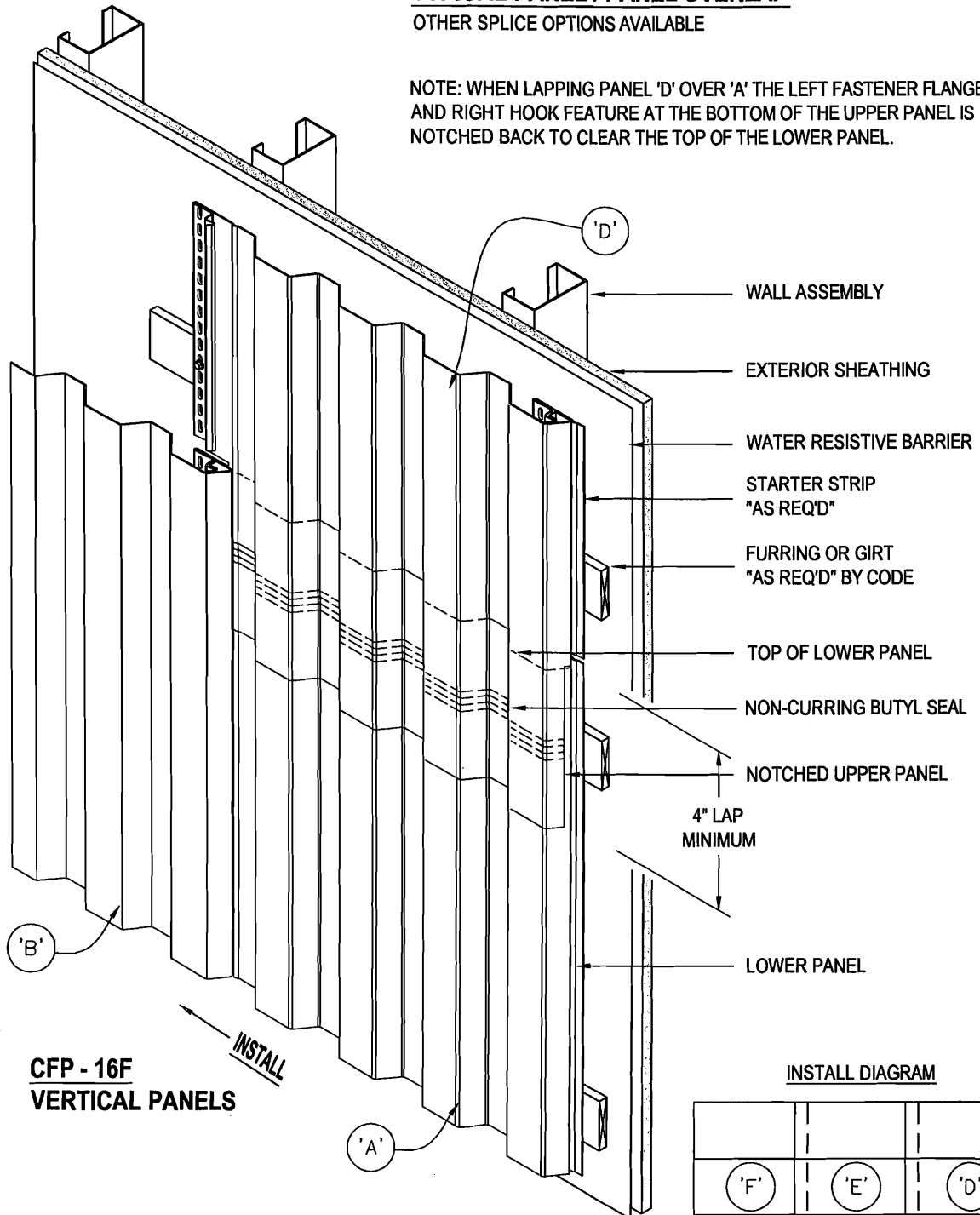
Local (763) 576-9595

Fax (763) 576-9596

TYPICAL PANEL / PANEL OVERLAP

OTHER SPLICE OPTIONS AVAILABLE

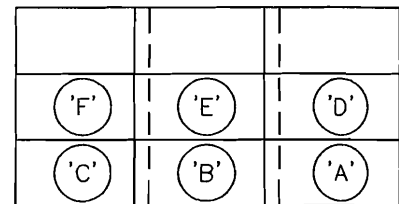
NOTE: WHEN LAPPING PANEL 'D' OVER 'A' THE LEFT FASTENER FLANGE AND RIGHT HOOK FEATURE AT THE BOTTOM OF THE UPPER PANEL IS NOTCHED BACK TO CLEAR THE TOP OF THE LOWER PANEL.



**CFP - 16F
VERTICAL PANELS**

INSTALL

INSTALL DIAGRAM



VB.1

